

For Research Use Only

Serpin F1/PEDF Monoclonal antibody

Catalog Number: 66554-1-Ig



Basic Information

Catalog Number:

66554-1-Ig

GenBank Accession Number:

BC013984

Purification Method:

Protein G purification

Size:

150ul, Concentration: 1000 ug/ml by Nanodrop and 1000 ug/ml by Bradford method using BSA as the standard;

GeneID (NCBI):

5176

CloneNo.:

2C5C8

Source:

Mouse

UNIPROT ID:

P36955

Recommended Dilutions:

WB 1:2000-1:10000

Isotype:

IgG1

Full Name:

serpin peptidase inhibitor, clade F (alpha-2 antiplasmin, pigment epithelium derived factor), member 1

Immunogen Catalog Number:

AG26660

Calculated MW:

418 aa, 46 kDa

Observed MW:

46-50 kDa

Applications

Tested Applications:

WB, ELISA

Positive Controls:

WB : human plasma tissue, pig plasma tissue, human blood tissue

Species Specificity:

human, pig

Background Information

PEDF also known as serpin F1 (SERPINF1), is a multifunctional secreted protein that has anti-angiogenic, anti-tumorigenic, and neurotrophic functions. It is an approximately 50-kDa secreted protein that is widely expressed, including by osteoblasts and osteoclasts. PEDF is also one of the most abundant secretory products of adipocytes, and circulating concentrations of PEDF correlate positively with body fat mass and INS resistance. PEDF is a neurotrophic factor involved in neuronal differentiation in retinoblastoma cells. Mutations in this gene were found in individuals with osteogenesis imperfecta, type VI.

Storage

Storage:

Store at -20°C. Stable for one year after shipment.

Storage Buffer:

PBS with 0.02% sodium azide and 50% glycerol, pH7.3

Aliquoting is unnecessary for -20°C storage

*** 20ul sizes contain 0.1% BSA

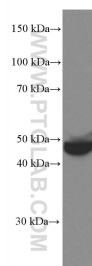
For technical support and original validation data for this product please contact:

T: 1 (888) 4PTGLAB (1-888-478-4522) (toll free in USA), or 1(312) 455-8498 (outside USA)

E: proteintech@ptglab.com
W: ptglab.com

This product is exclusively available under Proteintech Group brand and is not available to purchase from any other manufacturer.

Selected Validation Data



human plasma were subjected to SDS PAGE followed by western blot with 66554-1-Ig (PEDF antibody) at dilution of 1:5000 incubated at room temperature for 1.5 hours.