

For Research Use Only

BCL10 Monoclonal antibody

Catalog Number: 66556-1-Ig **1 Publications**



Basic Information

Catalog Number:	66556-1-Ig	GenBank Accession Number:	BC053617	Purification Method:	Protein A purification
Size:	150ul , Concentration: 1000 ug/ml by Nanodrop;	GeneID (NCBI):	8915	CloneNo.:	2E8G5
Source:	Mouse	UNIPROT ID:	O95999	Recommended Dilutions:	WB 1:1000-1:6000
Isotype:	IgG1	Full Name:	B-cell CLL/lymphoma 10		IHC 1:350-1:1400
Immunogen Catalog Number:	AG12162	Calculated MW:	233 aa, 26 kDa		IF/ICC 1:200-1:800
		Observed MW:	30-32 kDa		

Applications

Tested Applications:	WB, IHC, IF/ICC, FC (Intra), ELISA	Positive Controls:	
Cited Applications:	WB	WB :	HeLa cells, Raji cells, HepG2 cells, HCT 116 cells, MOLT-4 cells, Jurkat cells, K-562 cells, Ramos cells
Species Specificity:	human	IHC :	human tonsillitis tissue, human lymphoma tissue
Cited Species:	human	IF/ICC :	HepG2 cells,
Note-IHC: suggested antigen retrieval with TE buffer pH 9.0; (*) Alternatively, antigen retrieval may be performed with citrate buffer pH 6.0			

Notable Publications

Author	Pubmed ID	Journal	Application
Yinwu Shang	31178130	Biochem Biophys Res Commun	WB

Storage

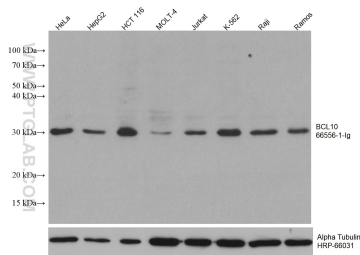
Storage:
Store at -20°C. Stable for one year after shipment.
Storage Buffer:
PBS with 0.02% sodium azide and 50% glycerol pH 7.3.
Aliquoting is unnecessary for -20°C storage

*** 20ul sizes contain 0.1% BSA

For technical support and original validation data for this product please contact:
T: 1 (888) 4PTGLAB (1-888-478-4522) (toll free in USA), or 1(312) 455-8498 (outside USA)
E: proteintech@ptglab.com
W: ptglab.com

This product is exclusively available under Proteintech Group brand and is not available to purchase from any other manufacturer.

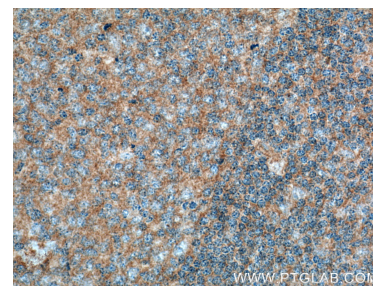
Selected Validation Data



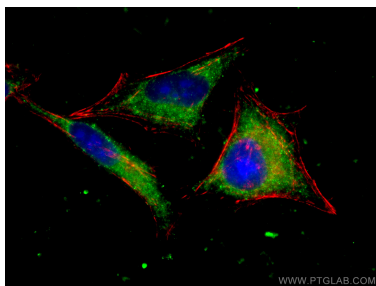
Various lysates were subjected to SDS PAGE followed by western blot with 66556-1-Ig (BCL10 antibody) at dilution of 1:3000 incubated at room temperature for 1.5 hours. The membrane was stripped and reblotted with HRP-conjugated Alpha Tubulin Monoclonal antibody (HRP-66031) as loading control.



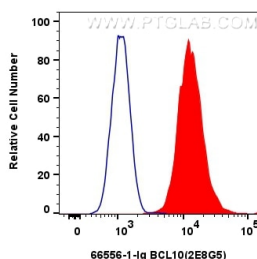
Immunohistochemical analysis of paraffin-embedded human tonsillitis tissue slide using 66556-1-Ig (BCL10 antibody) at dilution of 1:700 (under 10x lens. Heat mediated antigen retrieval with Tris-EDTA buffer (pH 9.0).



Immunohistochemical analysis of paraffin-embedded human tonsillitis tissue slide using 66556-1-Ig (BCL10 antibody) at dilution of 1:700 (under 40x lens. Heat mediated antigen retrieval with Tris-EDTA buffer (pH 9.0).



Immunofluorescent analysis of (-20°C Ethanol) fixed HepG2 cells using BCL10 antibody (66556-1-Ig, Clone: 2E8G5) at dilution of 1:400 and CoraLite®488-Conjugated AffiniPure Goat Anti-Mouse IgG(H+L), CL594-Phalloidin (red).



1x10⁶ Jurkat cells were intracellularly stained with 0.4 ug BCL10 Monoclonal antibody (66556-1-Ig, Clone:2E8G5) and CoraLite®488-Conjugated AffiniPure Goat Anti-Mouse IgG(H+L) (SA00013-1) (red), or 0.4 ug Mouse IgG1 Isotype Control (MOPC-21) (65124-1-Ig, Clone: MOPC-21) (blue). Cells were fixed with 4% PFA and permeabilized with Flow Cytometry Perm Buffer (PF00011-C).