

For Research Use Only

PLDN Monoclonal antibody

Catalog Number: 66558-1-Ig



Basic Information

Catalog Number: 66558-1-Ig	GenBank Accession Number: BC004819	Purification Method: Protein G purification
Size: 150ul , Concentration: 1200 µg/ml by Nanodrop and 1000 µg/ml by Bradford method using BSA as the standard;	GeneID (NCBI): 26258	CloneNo.: 4F4C11
Source: Mouse	Full Name: pallidin homolog (mouse)	Recommended Dilutions: WB 1:500-1:3000
Isotype: IgG1	Calculated MW: 23~24 kDa	
Immunogen Catalog Number: AG18095	Observed MW: 26 kDa	

Applications

Tested Applications: WB, ELISA	Positive Controls: WB : HeLa cells,
Species Specificity: Human, Mouse, Rat	

Background Information

Pallidin, also named as PLDN and PA, is involved in the development of lysosome-related organelles, such as melanosomes and platelet-dense granules. It may play a role in intracellular vesicle trafficking, particularly in the vesicle-docking and fusion process. Pallidin interacts with syntaxin-12 which is a t-SNARE protein that mediates vesicle docking and fusion.

Storage

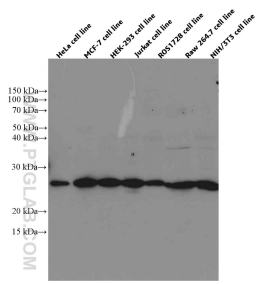
Storage:
Store at -20°C. Stable for one year after shipment.
Storage Buffer:
PBS with 0.02% sodium azide and 50% glycerol pH 7.3.
Aliquoting is unnecessary for -20°C storage

*** 20ul sizes contain 0.1% BSA

For technical support and original validation data for this product please contact:
T: 1 (888) 4PTGLAB (1-888-478-4522) (toll free in USA), or 1(312) 455-8498 (outside USA)
E: proteintech@ptglab.com
W: ptglab.com

This product is exclusively available under Proteintech Group brand and is not available to purchase from any other manufacturer.

Selected Validation Data



Various lysates were subjected to SDS PAGE followed by western blot with 66558-1-Ig (PLDN antibody) at dilution of 1:1500 incubated at room temperature for 1.5 hours.