

For Research Use Only

PLDN Monoclonal antibody, PBS Only



Catalog Number: 66558-1-PBS

Basic Information

Catalog Number: 66558-1-PBS	GenBank Accession Number: BC004819	Purification Method: Protein A purification
Size: 100ug , Concentration: 1 mg/ml by Nanodrop;	GeneID (NCBI): 26258	CloneNo.: 4F4C11
Source: Mouse	UNIPROT ID: Q9UL45	
Isotype: IgG1	Full Name: pallidin homolog (mouse)	
Immunogen Catalog Number: AG18095	Calculated MW: 23~24 kDa	
	Observed MW: 26 kDa	

Applications

Tested Applications:
WB, Indirect ELISA

Species Specificity:
Human, Mouse, Rat

Background Information

Pallidin, also named as PLDN and PA, is involved in the development of lysosome-related organelles, such as melanosomes and platelet-dense granules. It may play a role in intracellular vesicle trafficking, particularly in the vesicle-docking and fusion process. Pallidin interacts with syntaxin-12 which is a t-SNARE protein that mediates vesicle docking and fusion.

Storage

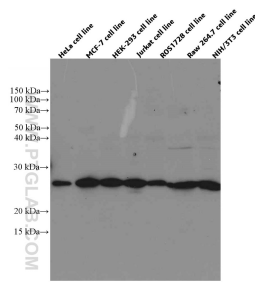
Storage:
Store at -80°C.

Storage Buffer:
PBS Only

For technical support and original validation data for this product please contact:
T: 1 (888) 4PTGLAB (1-888-478-4522) (toll free in USA), or 1(312) 455-8498 (outside USA)
E: proteintech@ptglab.com
W: ptglab.com

This product is exclusively available under Proteintech Group brand and is not available to purchase from any other manufacturer.

Selected Validation Data



Various lysates were subjected to SDS PAGE followed by western blot with 66558-1-Ig (PLDN antibody) at dilution of 1:1500 incubated at room temperature for 1.5 hours. This data was developed using the same antibody clone with 66558-1-PBS in a different storage buffer formulation.