

For Research Use Only

# SMAD1 Monoclonal antibody, PBS Only



Catalog Number: 66559-1-PBS

## Basic Information

<b>Catalog Number:</b> 66559-1-PBS	<b>GenBank Accession Number:</b> BC001878	<b>Purification Method:</b> Protein A purification
<b>Size:</b> 100ug , Concentration: 1 mg/ml by Nanodrop;	<b>GeneID (NCBI):</b> 4086	<b>CloneNo.:</b> 2D10B8
<b>Source:</b> Mouse	<b>UNIPROT ID:</b> Q15797	
<b>Isotype:</b> IgG1	<b>Full Name:</b> SMAD family member 1	
<b>Immunogen Catalog Number:</b> AG0701	<b>Calculated MW:</b> 52 kDa	
	<b>Observed MW:</b> 52 kDa	

## Applications

**Tested Applications:**  
WB, IHC, Indirect ELISA

**Species Specificity:**  
Human, Mouse, Rat

## Background Information

Transforming growth factor- $\beta$  (TGF- $\beta$ ) superfamily is recognized as one of the largest families of secreted multifunctional peptides exerting different biological effects on a large variety of cell types, such as regulation of hormone secretion, stimulation of extracellular matrix formation, the inhibition of proliferation of many cell types, cell survival, bone formation, and chemotaxis for inflammatory cells. One of the most important proteins that modulate TGF- $\beta$  ligand activity is the SMAD family proteins. SMAD1 is one of the receptor-activated Smads. It's also a signal transducers of BMP signaling and binds to several proteins involved in ubiquitin-proteasome system (UPS). Transcriptional modulator activated by BMP (bone morphogenetic proteins) type 1 receptor kinase

## Storage

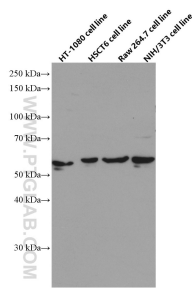
**Storage:**  
Store at -80°C.

**Storage Buffer:**  
PBS Only

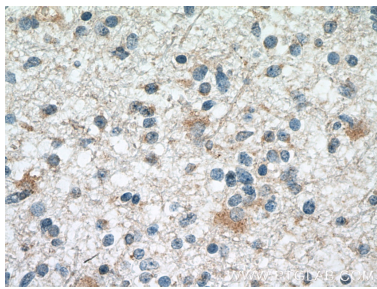
For technical support and original validation data for this product please contact:  
T: 1 (888) 4PTGLAB (1-888-478-4522) (toll free in USA), or 1(312) 455-8498 (outside USA)  
E: [proteintech@ptglab.com](mailto:proteintech@ptglab.com)  
W: [ptglab.com](http://ptglab.com)

This product is exclusively available under Proteintech Group brand and is not available to purchase from any other manufacturer.

## Selected Validation Data



Various lysates were subjected to SDS PAGE followed by western blot with 66559-1-Ig (SMAD1 antibody) at dilution of 1:5000 incubated at room temperature for 1.5 hours. This data was developed using the same antibody clone with 66559-1-PBS in a different storage buffer formulation.



Immunohistochemical analysis of paraffin-embedded human gliomas tissue slide using 66559-1-Ig (SMAD1 antibody) at dilution of 1:500 (under 40x lens. Heat mediated antigen retrieval with Tris-EDTA buffer (pH 9.0). This data was developed using the same antibody clone with 66559-1-PBS in a different storage buffer formulation.