

For Research Use Only

Tom22 Monoclonal antibody

Catalog Number: 66562-1-Ig **2 Publications**



Basic Information

Catalog Number: 66562-1-Ig	GenBank Accession Number: BC009363	Purification Method: Protein A purification
Size: 150ul, Concentration: 1800 µg/ml by Nanodrop and 1000 µg/ml by Bradford method using BSA as the standard;	GeneID (NCBI): 56993	CloneNo.: 1C2B11
Source: Mouse	Full Name: translocase of outer mitochondrial membrane 22 homolog (yeast)	Recommended Dilutions: WB 1:5000-1:50000 IHC 1:50-1:500 IF 1:400-1:1600
Isotype: IgG2a	Calculated MW: 15 kDa	
Immunogen Catalog Number: AG1797	Observed MW: 22 kDa	

Applications

Tested Applications:
FC, IF, IHC, WB, ELISA

Cited Applications:
IF, WB

Species Specificity:
Human

Cited Species:
human, mouse

Note-IHC: suggested antigen retrieval with TE buffer pH 9.0; (*) Alternatively, antigen retrieval may be performed with citrate buffer pH 6.0

Positive Controls:

WB: A431 cells, T-47D cells, L02 cells, Raji cells, HeLa cells, HEK-293 cells, HepG2 cells, K-562 cells, Jurkat cells

IHC: human kidney tissue, human colon cancer tissue

IF: HepG2 cells,

Background Information

Tom22 is a central receptor component of the translocase of the outer membrane of mitochondria responsible for the recognition and translocation of cytosolically synthesized mitochondrial preproteins. It is shown in UniProt that phosphorylation is performed at three positions of this protein which may increase the molecular weight. Catalog#66562-1-Ig recognises the 22 kDa protein larger than the calculated MW which is 15 kDa. Besides, it has been reported the MV of TOMM22 is 22 kDa (PMID:19285029).

Notable Publications

Author	Pubmed ID	Journal	Application
Qiang Wang	34446444	Science	WB
Wenjie Bao	35933512	Nat Commun	IF

Storage

Storage:

Store at -20°C. Stable for one year after shipment.

Storage Buffer:

PBS with 0.02% sodium azide and 50% glycerol pH 7.3.

Aliquoting is unnecessary for -20°C storage

***** 20ul sizes contain 0.1% BSA**

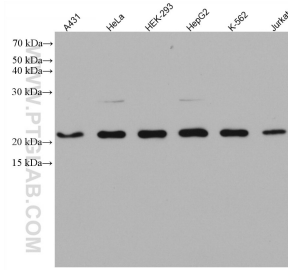
For technical support and original validation data for this product please contact:

T: 1 (888) 4PTGLAB (1-888-478-4522) (toll free in USA), or 1(312) 455-8498 (outside USA)

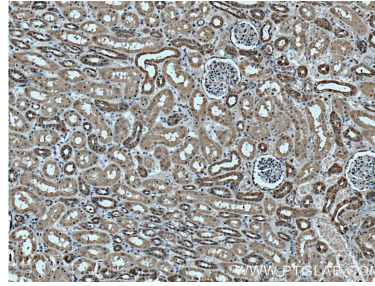
E: proteintech@ptglab.com
W: ptglab.com

This product is exclusively available under Proteintech Group brand and is not available to purchase from any other manufacturer.

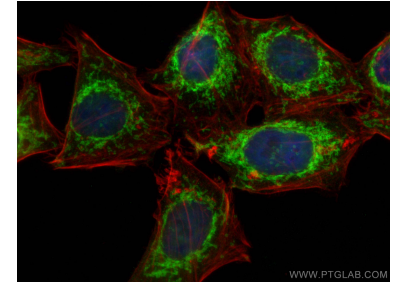
Selected Validation Data



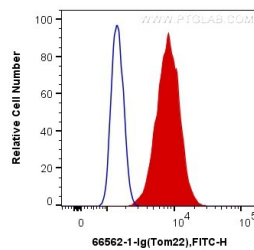
Various lysates were subjected to SDS PAGE followed by western blot with 66562-1-Ig (Tom22 antibody) at dilution of 1:10000 incubated at room temperature for 1.5 hours.



Immunohistochemical analysis of paraffin-embedded human kidney tissue slide using 66562-1-Ig (Tom22 antibody) at dilution of 1:200 (under 10x lens. Heat mediated antigen retrieval with Tris-EDTA buffer (pH 9.0).



Immunofluorescent analysis of (4% PFA) fixed HepG2 cells using Tom22 antibody (66562-1-Ig, Clone: 1C2B11) at dilution of 1:800 and CoraLite®488-Conjugated AffiniPure Goat Anti-Mouse IgG(H+L), CL594-Phalloidin (red).



1×10^6 HEK-293 cells were intracellularly stained with 0.4 μ g Anti-Human Tom22 (66562-1-Ig, Clone:1C2B11) and CoraLite®488-Conjugated AffiniPure Goat Anti-Mouse IgG(H+L) at dilution 1:1000 (red), or 0.4 μ g Control Antibody. Cells were fixed with 4% PFA and permeabilized with Flow Cytometry Perm Buffer (PF00011-C).