

For Research Use Only

Tom22 Monoclonal antibody, PBS Only



Catalog Number: 66562-1-PBS

Basic Information

Catalog Number: 66562-1-PBS	GenBank Accession Number: BC009363	Purification Method: Protein A purification
Size: 100ug, Concentration: 1mg/ml by Nanodrop;	GeneID (NCBI): 56993	CloneNo.: 1C2B11
Source: Mouse	UNIPROT ID: Q9NS69	
Isotype: IgG2a	Full Name: translocase of outer mitochondrial membrane 22 homolog (yeast)	
Immunogen Catalog Number: AG1797	Calculated MW: 15 kDa	
	Observed MW: 22 kDa	

Applications

Tested Applications:
WB, IHC, IF/ICC, ELISA

Species Specificity:
human

Background Information

Tom22 is a central receptor component of the translocase of the outer membrane of mitochondria responsible for the recognition and translocation of cytosolically synthesized mitochondrial preproteins. It is showed in UniProt that phosphorylation is performed at three positions of this protein which may increase the molecular weight. Catalog#66562-1-Ig recognises the 22 kDa protein larger than the calculated MW which is 15 kDa. Besides, it has been reported the MV of TOMM22 is 22 kDa (PMID:19285029).

Storage

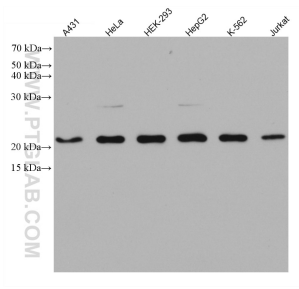
Storage:
Store at -80°C.

Storage Buffer:
PBS Only

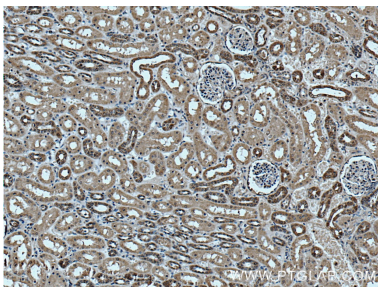
For technical support and original validation data for this product please contact:
T: 1 (888) 4PTGLAB (1-888-478-4522) (toll free in USA), or 1(312) 455-8498 (outside USA)
E: proteintech@ptglab.com
W: ptglab.com

This product is exclusively available under Proteintech Group brand and is not available to purchase from any other manufacturer.

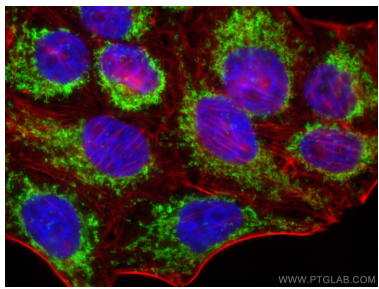
Selected Validation Data



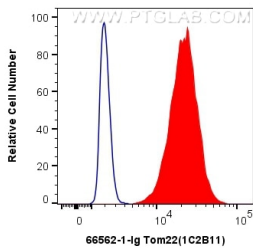
Various lysates were subjected to SDS PAGE followed by western blot with 66562-1-Ig (Tom22 antibody) at dilution of 1:10000 incubated at room temperature for 1.5 hours. This data was developed using the same antibody clone with 66562-1-PBS in a different storage buffer formulation.



Immunohistochemical analysis of paraffin-embedded human kidney tissue slide using 66562-1-Ig (Tom22 antibody) at dilution of 1:200 (under 10x lens. Heat mediated antigen retrieval with Tris-EDTA buffer (pH 9.0). This data was developed using the same antibody clone with 66562-1-PBS in a different storage buffer formulation.



Immunofluorescent analysis of (4% PFA) fixed HepG2 cells using Tom22 antibody (66562-1-Ig, Clone: 1C2B11) at dilution of 1:400 and CoraLite®488-Conjugated AffiniPure Goat Anti-Mouse IgG(H+L) (SA00013-1), CL594-phalloidin (red). This data was developed using the same antibody clone with 66562-1-PBS in a different storage buffer formulation.



1X10⁶ HEK-293 cells were intracellularly stained with 0.4 ug Anti-Human Tom22 (66562-1-Ig, Clone:1C2B11) and CoraLite®488-Conjugated AffiniPure Goat Anti-Mouse IgG(H+L) at dilution 1:1000 (red), or 0.4 ug Mouse IgG2a Isotype Control (C1.18.4) (65208-1-Ig, Clone: C1.18.4) (blue). Cells were fixed with 4% PFA and permeabilized with Flow Cytometry Perm Buffer (PF00011-C). This data was developed using the same antibody clone with 66562-1-

