

For Research Use Only

# KAT2A/GCN5 Monoclonal antibody

Catalog Number: 66575-1-Ig

Featured Product

6 Publications



## Basic Information

Catalog Number:

66575-1-Ig

GenBank Accession Number:

BC032743

Purification Method:

Protein A purification

Size:

150ul, Concentration: 2200 µg/ml by 2648

GeneID (NCBI):

2648

CloneNo.:

1F6G7

Nanodrop and 1000 µg/ml by Bradford method using BSA as the standard;

UNIPROT ID:

Q92830

Recommended Dilutions:

WB 1:2000-1:10000

Source:

Mouse

Full Name:

K(lysine) acetyltransferase 2A

Isotype:

IgG2a

Calculated MW:

94 kDa

Immunogen Catalog Number:

AG6940

Observed MW:

94 kDa

## Applications

Tested Applications:

WB, ELISA

Positive Controls:

WB : HeLa cells, MCF-7 cells, HSC-T6 cells, NIH/3T3 cells, SKOV-3 cells

Cited Applications:

WB, IF

Species Specificity:

Human, mouse, rat

Cited Species:

human, mouse

## Background Information

GCN5, encoded by KAT2A, is a member of nuclear A-type histone acetyltransferase (HAT) which has direct impact on gene transcription. Additionally, GCN5 has roles in cell cycle regulation, DNA replication, and DNA repair, highlighting it as key player in the maintenance of genome stability. GCN5 is a coactivator of c-MYC oncogene protein and has oncogenic roles in various cancers.

## Notable Publications

Author	Pubmed ID	Journal	Application
Shang-Kun Dai	35735108	Development	WB
Qian Guo	34155695	J Bone Miner Res	WB
Mayur Doke	34115777	PLoS One	WB,IF

## Storage

Storage:

Store at -20°C. Stable for one year after shipment.

Storage Buffer:

PBS with 0.02% sodium azide and 50% glycerol pH 7.3.

Aliquoting is unnecessary for -20°C storage

\*\*\* 20ul sizes contain 0.1% BSA

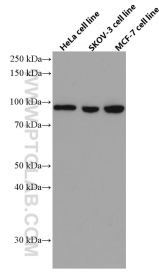
For technical support and original validation data for this product please contact:

T: 1 (888) 4PTGLAB (1-888-478-4522) (toll free in USA), or 1(312) 455-8498 (outside USA)

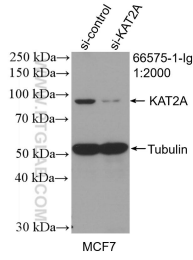
E: proteintech@ptglab.com  
W: ptglab.com

This product is exclusively available under Proteintech Group brand and is not available to purchase from any other manufacturer.

## Selected Validation Data



Various cells were subjected to SDS PAGE followed by western blot with 66575-1-Ig (KAT2A antibody) at dilution of 1:5000 incubated at room temperature for 1.5 hours.



WB result of KAT2A/GNC5 antibody (66575-1-Ig; 1:2000; incubated at room temperature for 1.5 hours) with sh-Control and sh-KAT2A/GNC5 transfected MCF-7 cells.