

For Research Use Only

SDHA Monoclonal antibody

Catalog Number: 66588-1-Ig **7 Publications**



Basic Information

| | | |
|---|--|---|
| Catalog Number: 66588-1-Ig | GenBank Accession Number: BC001380 | Purification Method: Protein A purification |
| Size: 150ul , Concentration: 1400 ug/ml by Nanodrop and 880 ug/ml by Bradford method using BSA as the standard; | GeneID (NCBI): 6389 | CloneNo.: 5E10G12 |
| Source: Mouse | UNIPROT ID: P31040 | Recommended Dilutions: WB 1:5000-1:50000 IHC 1:1000-1:4000 IF/ICC 1:200-1:800 |
| Isotype: IgG1 | Full Name: succinate dehydrogenase complex, subunit A, flavoprotein (Fp) | |
| Immunogen Catalog Number: AG7023 | Calculated MW: 73 kDa | |
| | Observed MW: 62-73 kDa | |

Applications

| | |
|--|--|
| Tested Applications: WB, IHC, IF/ICC, ELISA | Positive Controls: |
| Cited Applications: WB | WB : NIH/3T3 cells, pig brain tissue, rat brain tissue, mouse brain tissue, rabbit brain tissue |
| Species Specificity: human, mouse, rat, pig, rabbit | IHC : human liver cancer tissue, |
| Cited Species: human, mouse | IF/ICC : HeLa cells, |
| Note-IHC: suggested antigen retrieval with TE buffer pH 9.0; (*) Alternatively, antigen retrieval may be performed with citrate buffer pH 6.0 | |

Background Information

SDHA, also named as SDH2, SDHF and Fp, belongs to the FAD-dependent oxidoreductase 2 family and FRD/SDH subfamily. SDHA is the flavoprotein subunit of succinate dehydrogenase (SDH) that is involved in complex II of the mitochondrial electron transport chain and is responsible for transferring electrons from succinate to ubiquinone (coenzyme Q). SDHA has 3 isoforms with the molecular mass of 73, 67 and 57 kDa, and the N-terminal (~5 kDa) can be removed in mature form. It can be detected a band of 68 kDa in cutaneous melanoma(PMID:21698147). SDHA may act as a tumor suppressor.

Notable Publications

| Author | Pubmed ID | Journal | Application |
|-------------|-----------|--------------------|-------------|
| Jian Xiao | 31144242 | Sci China Life Sci | |
| Pengyu Wang | 35905743 | Cell Chem Biol | WB |
| Tao Zhang | 39615486 | Cell Rep Med | WB |

Storage

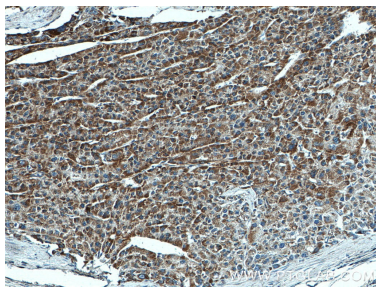
Storage:
Store at -20°C. Stable for one year after shipment.
Storage Buffer:
PBS with 0.02% sodium azide and 50% glycerol pH 7.3.
Aliquoting is unnecessary for -20°C storage

*** 20ul sizes contain 0.1% BSA

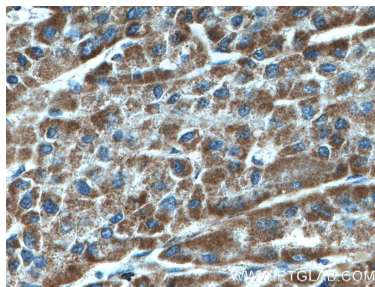
For technical support and original validation data for this product please contact:
T: 1 (888) 4PTGLAB (1-888-478-4522) (toll free in USA), or 1(312) 455-8498 (outside USA)
E: proteintech@ptglab.com
W: ptglab.com

This product is exclusively available under Proteintech Group brand and is not available to purchase from any other manufacturer.

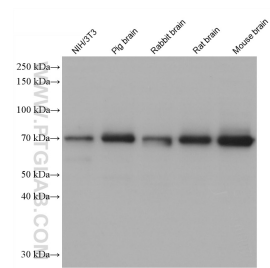
Selected Validation Data



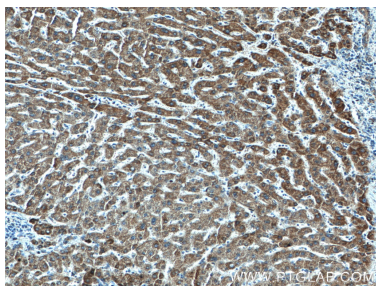
Immunohistochemical analysis of paraffin-embedded human liver cancer tissue slide using 66588-1-Ig (SDHA antibody) at dilution of 1:2000 (under 10x lens).



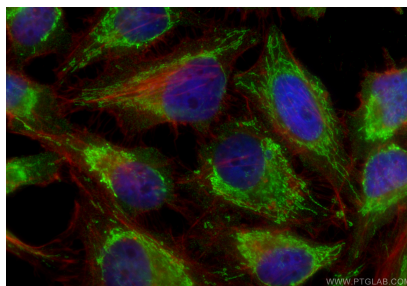
Immunohistochemical analysis of paraffin-embedded human liver cancer tissue slide using 66588-1-Ig (SDHA antibody) at dilution of 1:2000 (under 40x lens).



Various lysates were subjected to SDS PAGE followed by western blot with 66588-1-Ig (SDHA antibody) at dilution of 1:20000 incubated at room temperature for 1.5 hours.



Immunohistochemical analysis of paraffin-embedded human liver cancer tissue slide using 66588-1-Ig (SDHA antibody) at dilution of 1:2000 (under 10x lens).



Immunofluorescent analysis of (4% PFA) fixed HeLa cells using SDHA antibody (66588-1-Ig, Clone: 5E10G12) at dilution of 1:400 and CoraLite@488-Conjugated Goat Anti-Mouse IgG(H+L) (SA00013-1), CL594-Phalloidin (red).