

For Research Use Only

# RAF1 Monoclonal antibody

Catalog Number: 66592-1-Ig

Featured Product

12 Publications



## Basic Information

Catalog Number:

66592-1-Ig

Size:

150ul, Concentration: 1000 ug/ml by Nanodrop;

Source:

Mouse

Isotype:

IgG2a

Immunogen Catalog Number:

AG25423

GenBank Accession Number:

BC018119

GeneID (NCBI):

5894

UNIPROT ID:

P04049

Full Name:

v-raf-1 murine leukemia viral oncogene homolog 1

Calculated MW:

648 aa, 73 kDa

Observed MW:

70-75 kDa

Purification Method:

Protein A purification

CloneNo.:

1D6A1

Recommended Dilutions:

WB 1:1000-1:6000

IHC 1:150-1:600

IF/ICC 1:400-1:1600

## Applications

Tested Applications:

WB, IHC, IF/ICC, ELISA

Cited Applications:

WB, IF

Species Specificity:

human, mouse

Cited Species:

human, mouse

**Note-IHC: suggested antigen retrieval with TE buffer pH 9.0; (\*) Alternatively, antigen retrieval may be performed with citrate buffer pH 6.0**

Positive Controls:

WB : HepG2 cells, DC2.4 cells, HEK-293 cells

IHC : human prostate cancer tissue,

IF/ICC : HEK-293 cells,

## Background Information

Raf-1 proto-oncogene, serine/threonine kinase(RAF1), is a MAP kinase kinase kinase (MAP3K), which functions downstream of the Ras family of membrane associated GTPases to which it binds directly. RAF1 has two isoforms with MW of 73, 75 kDa. RAF1 plays an important role in the control of gene expression involved in the cell division cycle, apoptosis, cell differentiation and cell migration.

## Notable Publications

Author	Pubmed ID	Journal	Application
Peng Liu	36209075	Cell Mol Biol Lett	WB
Wei Li	35042538	Cancer Cell Int	WB
Wei Zheng	35116115	World J Gastrointest Oncol	WB

## Storage

Storage:

Store at -20°C. Stable for one year after shipment.

Storage Buffer:

PBS with 0.02% sodium azide and 50% glycerol, pH7.3

Aliquoting is unnecessary for -20°C storage

\*\*\* 20ul sizes contain 0.1% BSA

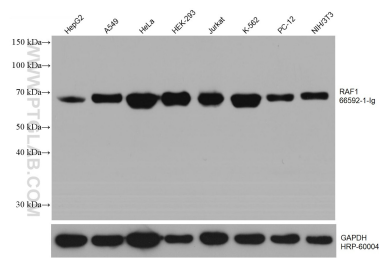
For technical support and original validation data for this product please contact:

T: 1 (888) 4PTGLAB (1-888-478-4522) (toll free in USA), or 1(312) 455-8498 (outside USA)

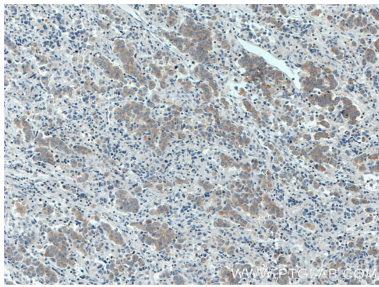
E: [proteintech@ptglab.com](mailto:proteintech@ptglab.com)  
W: [ptglab.com](http://ptglab.com)

This product is exclusively available under Proteintech Group brand and is not available to purchase from any other manufacturer.

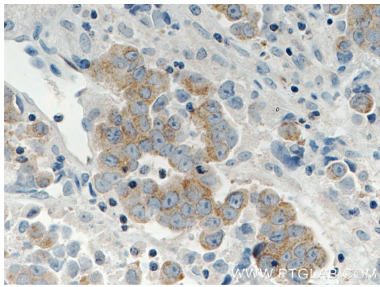
Selected Validation Data



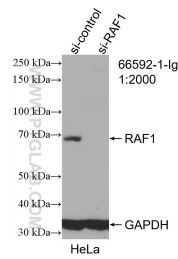
Various lysates were subjected to SDS PAGE followed by western blot with 66592-1-Ig (RAF1 antibody) at dilution of 1:3000 incubated at room temperature for 1.5 hours. The membrane was stripped and reblotted with HRP-conjugated GAPDH Monoclonal antibody (HRP-60004) as loading control.



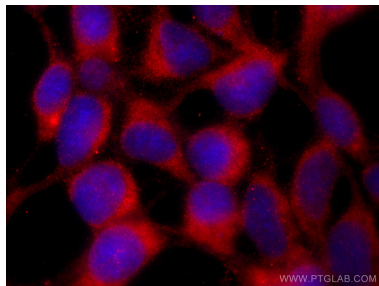
Immunohistochemical analysis of paraffin-embedded human prostate cancer tissue slide using 66592-1-Ig (RAF1 antibody) at dilution of 1:300 (under 10x lens). Heat mediated antigen retrieval with Tris-EDTA buffer (pH 9.0).



Immunohistochemical analysis of paraffin-embedded human prostate cancer tissue slide using 66592-1-Ig (RAF1 antibody) at dilution of 1:300 (under 40x lens). Heat mediated antigen retrieval with Tris-EDTA buffer (pH 9.0).



WB result of RAF1 antibody (66592-1-Ig; 1:2000; incubated at room temperature for 1.5 hours) with sh-Control and sh-RAF1 transfected HEK-293 cells.



Immunofluorescent analysis of (-20°C Ethanol) fixed HEK-293 cells using RAF1 antibody (66592-1-Ig, Clone: 1D6A1 ) at dilution of 1:800 and CoraLite® 488-Conjugated AffiniPure Goat Anti-Mouse IgG(H+L) (SA00013-1).