

For Research Use Only

MRPL23 Monoclonal antibody

Catalog Number: 66595-1-Ig



Basic Information

Catalog Number: 66595-1-Ig	GenBank Accession Number: BC027710	Purification Method: Protein A purification
Size: 150ul, Concentration: 1100 µg/ml by Nanodrop and 1000 µg/ml by Bradford method using BSA as the standard;	GeneID (NCBI): 6150	CloneNo.: 1G11C4
Source: Mouse	Full Name: mitochondrial ribosomal protein L23	Recommended Dilutions: WB 1:5000-1:50000 IHC 1:250-1:1000 IF 1:50-1:500
Isotype: IgG2a	Calculated MW: 153 aa, 18 kDa	
Immunogen Catalog Number: AG2220	Observed MW: 18 kDa	

Applications

Tested Applications: IF, IHC, WB, ELISA	Positive Controls: WB : HEK-293 cells, IHC : human breast cancer tissue, IF : HEK-293 cells,
Species Specificity: Human	
Note-IHC: suggested antigen retrieval with TE buffer pH 9.0; (*) Alternatively, antigen retrieval may be performed with citrate buffer pH 6.0	

Background Information

Storage

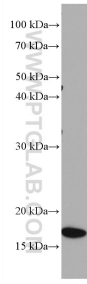
Storage:
Store at -20°C. Stable for one year after shipment.
Storage Buffer:
PBS with 0.02% sodium azide and 50% glycerol pH 7.3.
Aliquoting is unnecessary for -20°C storage

*** 20ul sizes contain 0.1% BSA

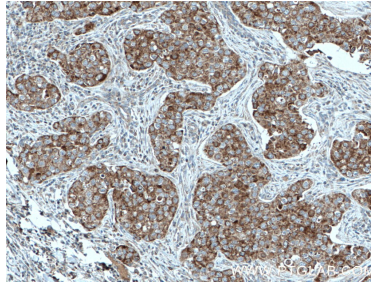
For technical support and original validation data for this product please contact:
T: 1 (888) 4PTGLAB (1-888-478-4522) (toll free in USA), or 1(312) 455-8498 (outside USA)
E: proteintech@ptglab.com
W: ptglab.com

This product is exclusively available under Proteintech Group brand and is not available to purchase from any other manufacturer.

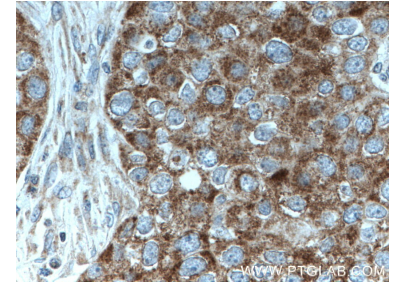
Selected Validation Data



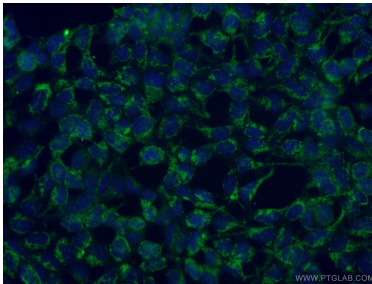
HEK-293 cells were subjected to SDS PAGE followed by western blot with 66595-1-Ig (MRPL23 antibody) at dilution of 1:10000 incubated at room temperature for 1.5 hours.



Immunohistochemical analysis of paraffin-embedded human breast cancer tissue slide using 66595-1-Ig (MRPL23 antibody) at dilution of 1:500 (under 10x lens. Heat mediated antigen retrieval with Tris-EDTA buffer (pH 9.0).



Immunohistochemical analysis of paraffin-embedded human breast cancer tissue slide using 66595-1-Ig (MRPL23 antibody) at dilution of 1:500 (under 40x lens. Heat mediated antigen retrieval with Tris-EDTA buffer (pH 9.0).



Immunofluorescent analysis of (4% PFA) fixed HEK-293 cells using 66595-1-Ig (MRPL23 antibody) at dilution of 1:100 and Alexa Fluor 488-conjugated AffiniPure Goat Anti-Mouse IgG(H+L).