

For Research Use Only

ETS1 Monoclonal antibody

Catalog Number: 66598-1-Ig

Featured Product

5 Publications



Basic Information

Catalog Number:

66598-1-Ig

Size:

150ul, Concentration: 1700 ug/ml by Nanodrop and 1000 ug/ml by Bradford method using BSA as the standard;

Source:

Mouse

Isotype:

IgG2b

Immunogen Catalog Number:

AG2127

GenBank Accession Number:

BC017314

GeneID (NCBI):

2113

UNIPROT ID:

P14921

Full Name:

v-ets erythroblastosis virus E26 oncogene homolog 1 (avian)

Calculated MW:

441 aa, 50 kDa

Observed MW:

50 kDa

Purification Method:

Protein A purification

CloneNo.:

4F2D4

Recommended Dilutions:

WB 1:2000-1:5000

IHC 1:1000-1:4000

IF/ICC 1:400-1:1600

Applications

Tested Applications:

WB, IHC, IF/ICC, ELISA

Cited Applications:

WB, IHC, ChIP

Species Specificity:

human, rat

Cited Species:

human, mouse

Note-IHC: suggested antigen retrieval with TE buffer pH 9.0; (*) Alternatively, antigen retrieval may be performed with citrate buffer pH 6.0

Positive Controls:

WB : HepG2 cells, Jurkat cells, Daudi cells, HSCT6 cells

IHC : rat spleen tissue, mouse lung tissue, mouse small intestine tissue, rat lung tissue, rat small intestine tissue

IF/ICC : A431 cells,

Background Information

ETS1 is a member of the ETS family of transcription factors, which are defined by the presence of a conserved ETS DNA-binding domain that recognizes the core consensus DNA sequence GGAA/T in target genes. ETS1 is a nuclear protein and primarily acts as a transcriptional activator, though it can also repress gene transcription. Since it is primarily expressed in lymphocytes, it plays several critical roles in immunity. In addition, it is important for angiogenesis. Since cells express several Ets proteins at the same time, functional redundancy is possible. This is particularly shown for the so-called housekeeping genes where several Ets factors were found to occupy the proximal promoters in vivo.

Notable Publications

Author	Pubmed ID	Journal	Application
Rebecca A Luchtel	35675522	Blood Adv	WB
Lihong Lu	34238215	Mol Med	WB, IHC
Lu Yang	39475379	Elife	WB

Storage

Storage:

Store at -20°C. Stable for one year after shipment.

Storage Buffer:

PBS with 0.02% sodium azide and 50% glycerol pH 7.3.

Aliquoting is unnecessary for -20°C storage

*** 20ul sizes contain 0.1% BSA

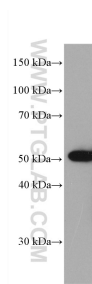
For technical support and original validation data for this product please contact:

T: 1 (888) 4PTGLAB (1-888-478-4522) (toll free in USA), or 1(312) 455-8498 (outside USA)

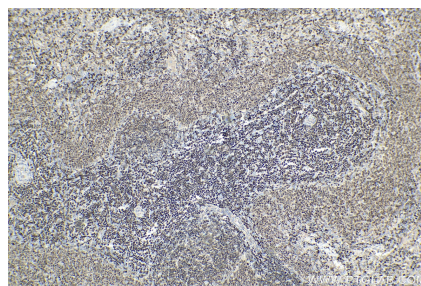
E: proteintech@ptglab.com
W: ptglab.com

This product is exclusively available under Proteintech Group brand and is not available to purchase from any other manufacturer.

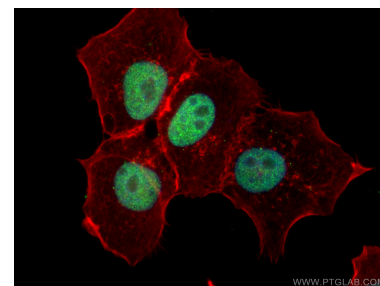
Selected Validation Data



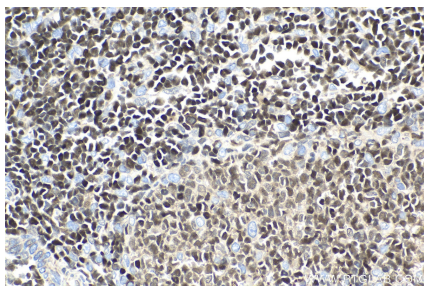
HepG2 cells were subjected to SDS PAGE followed by western blot with 66598-1-Ig (ETS1 antibody) at dilution of 1:5000 incubated at room temperature for 1.5 hours.



Immunohistochemical analysis of paraffin-embedded rat spleen tissue slide using 66598-1-Ig (ETS1 antibody) at dilution of 1:2000 (under 10x lens). Heat mediated antigen retrieval with Tris-EDTA buffer (pH 9.0).



Immunofluorescent analysis of (4% PFA) fixed A431 cells using ETS1 antibody (66598-1-Ig, Clone: 4F2D4) at dilution of 1:800 and CoraLite®488-Conjugated AffiniPure Goat Anti-Mouse IgG(H+L), CL594-Phalloidin (red).



Immunohistochemical analysis of paraffin-embedded rat spleen tissue slide using 66598-1-Ig (ETS1 antibody) at dilution of 1:2000 (under 40x lens). Heat mediated antigen retrieval with Tris-EDTA buffer (pH 9.0).