

For Research Use Only

# Palladin Monoclonal antibody

Catalog Number: 66601-1-Ig **1 Publications**



## Basic Information

<b>Catalog Number:</b> 66601-1-Ig	<b>GenBank Accession Number:</b> BC013867	<b>Purification Method:</b> Protein A purification
<b>Size:</b> 150ul , Concentration: 1600 ug/ml by Nanodrop and 1000 ug/ml by Bradford method using BSA as the standard;	<b>GeneID (NCBI):</b> 23022	<b>CloneNo.:</b> 2A1F6
<b>Source:</b> Mouse	<b>UNIPROT ID:</b> Q8WX93	<b>Recommended Dilutions:</b> WB 1:1000-1:4000 IHC 1:50-1:500 IF-P 1:200-1:800
<b>Isotype:</b> IgG2a	<b>Full Name:</b> palladin, cytoskeletal associated protein	
<b>Immunogen Catalog Number:</b> AG1288	<b>Calculated MW:</b> 1383 aa, 151 kDa	
	<b>Observed MW:</b> 151 kDa	

## Applications

<b>Tested Applications:</b> WB, IHC, IF-P, ELISA	<b>Positive Controls:</b>
<b>Cited Applications:</b> WB	<b>WB :</b> human heart tissue, pig heart tissue, rat heart tissue
<b>Species Specificity:</b> Human, rat, pig	<b>IHC :</b> human colon cancer tissue,
<b>Cited Species:</b> human	<b>IF-P :</b> mouse testis tissue,
<b>Note-IHC: suggested antigen retrieval with TE buffer pH 9.0; (*) Alternatively, antigen retrieval may be performed with citrate buffer pH 6.0</b>	

## Notable Publications

Author	Pubmed ID	Journal	Application
Xiong Shu	36047666	Cancer Med	WB

## Storage

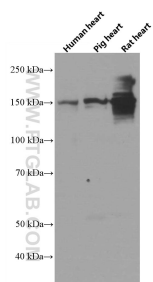
**Storage:**  
Store at -20°C. Stable for one year after shipment.  
**Storage Buffer:**  
PBS with 0.02% sodium azide and 50% glycerol pH 7.3.  
**Aliquoting is unnecessary for -20°C storage**

\*\*\* 20ul sizes contain 0.1% BSA

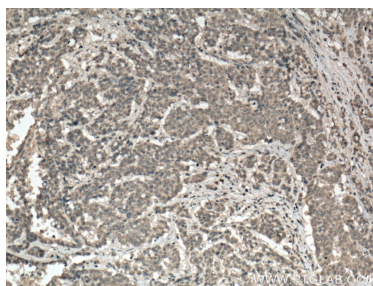
For technical support and original validation data for this product please contact:  
T: 1 (888) 4PTGLAB (1-888-478-4522) (toll free in USA), or 1(312) 455-8498 (outside USA)  
E: [proteintech@ptglab.com](mailto:proteintech@ptglab.com)  
W: [ptglab.com](http://ptglab.com)

This product is exclusively available under Proteintech Group brand and is not available to purchase from any other manufacturer.

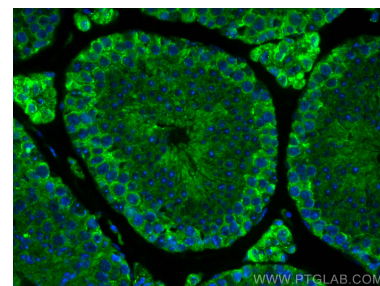
## Selected Validation Data



Human heart tissue, pig heart tissue and rat heart tissue were subjected to SDS PAGE followed by western blot with 66601-1-Ig (Palladin antibody) at dilution of 1:2000 incubated at room temperature for 1.5 hours.



Immunohistochemical analysis of paraffin-embedded human colon cancer tissue slide using 66601-1-Ig (Palladin antibody) at dilution of 1:200 (under 10x lens. Heat mediated antigen retrieval with Tris-EDTA buffer (pH 9.0).



Immunofluorescent analysis of (4% PFA) fixed mouse testis tissue using PALLD, palladin antibody (66601-1-Ig, Clone: 2A1F6 ) at dilution of 1:400 and CoraLite®488-Conjugated Goat Anti-Mouse IgG(H+L).