

For Research Use Only

MMACHC Monoclonal antibody

Catalog Number: 66609-1-Ig **2 Publications**



Basic Information

Catalog Number: 66609-1-Ig	GenBank Accession Number: BC006122	Purification Method: Protein A purification
Size: 150ul , Concentration: 900 µg/ml by Nanodrop and 907 µg/ml by Bradford method using BSA as the standard;	GeneID (NCBI): 25974	CloneNo.: 4G10A11
Source: Mouse	Full Name: methylmalonic aciduria (cobalamin deficiency) cblC type, with homocystinuria	Recommended Dilutions: WB 1:5000-1:50000 IF 1:200-1:800
Isotype: IgG1	Calculated MW: 282 aa, 32 kDa	
Immunogen Catalog Number: AG15001		

Applications

Tested Applications: FC, IF, WB, ELISA	Positive Controls:
Cited Applications: WB	WB : HepG2 cells, K-562 cells, HEK-293 cells, HeLa cells, Raji cells, RAW 264.7 cells
Species Specificity: Human, mouse	IF : HepG2 cells,
Cited Species: human, rat	

Background Information

MMACHC, also named as CblC, is located on chromosome 1 and comprises four coding exons. Human MMACHC catalyzes the reductive decyanation of cyanocobalamin and may serve as a trafficking chaperone for intracellular cobalamin. It also catalyzes the glutathione-dependent reductive demethylation of methylcobalamin, and, with much lower efficiency, the glutathione-dependent reductive demethylation of adenosylcobalamin. MMACHC binds cyanocobalamin, adenosylcobalamin, methylcobalamin and other, related vitamin B12 derivatives.

Notable Publications

Author	Pubmed ID	Journal	Application
Lingzhi Wang	35131382	Cancer Lett	WB
Wenjie Hu	37843800	Mol Neurobiol	WB

Storage

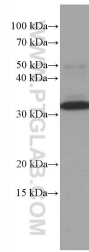
Storage:
Store at -20°C. Stable for one year after shipment.
Storage Buffer:
PBS with 0.02% sodium azide and 50% glycerol pH 7.3.
Aliquoting is unnecessary for -20°C storage

*** 20ul sizes contain 0.1% BSA

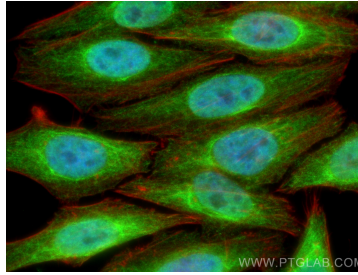
For technical support and original validation data for this product please contact:
T: 1 (888) 4PTGLAB (1-888-478-4522) (toll free in USA), or 1(312) 455-8498 (outside USA) E: proteintech@ptglab.com W: ptglab.com

This product is exclusively available under Proteintech Group brand and is not available to purchase from any other manufacturer.

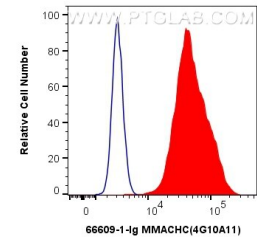
Selected Validation Data



HepG2 cells were subjected to SDS PAGE followed by western blot with 66609-1-Ig (MMACHC antibody) at dilution of 1:10000 incubated at room temperature for 1.5 hours.



Immunofluorescent analysis of (4% PFA) fixed HepG2 cells using MMAHC antibody (66609-1-Ig, Clone: 4G10A11) at dilution of 1:400 and CoraLite® 488-Conjugated AffiniPure Goat Anti-Mouse IgG(H+L), CL594-Phalloidin (red).



1×10^6 HeLa cells were intracellularly stained with 0.8 ug Anti-Human MMAHC (66609-1-Ig, Clone: 4G10A11) and CoraLite® 488-Conjugated AffiniPure Goat Anti-Mouse IgG(H+L) at dilution 1:1000 (red), or 0.8 ug Mouse IgG1 Isotype Control (MOPC-21) (65124-1-Ig, Clone: MOPC-21) (blue). Cells were fixed and permeabilized with Transcription Factor Staining Buffer Kit (PF00011).