

For Research Use Only

CCRL2 Monoclonal antibody

Catalog Number: 66611-1-Ig **4 Publications**



Basic Information

Catalog Number: 66611-1-Ig	GenBank Accession Number: BC025717	Purification Method: Protein G purification
Size: 150ul , Concentration: 1300 ug/ml by Nanodrop and 1000 ug/ml by Bradford method using BSA as the standard;	GeneID (NCBI): 9034	CloneNo.: 2C1E11
Source: Mouse	UNIPROT ID: O00421	Recommended Dilutions: WB 1:1000-1:6000 IHC 1:400-1:1600
Isotype: IgG1	Full Name: chemokine (C-C motif) receptor-like 2	
Immunogen Catalog Number: AG4045	Calculated MW: 344 aa, 40 kDa	
	Observed MW: 47 kDa	

Applications

Tested Applications: WB, IHC, ELISA	Positive Controls: WB : HeLa cells, K-562 cells
Cited Applications: WB	IHC : human spleen tissue,
Species Specificity: Human	
Cited Species: human	

Note-IHC: suggested antigen retrieval with TE buffer pH 9.0; (*) Alternatively, antigen retrieval may be performed with citrate buffer pH 6.0

Background Information

Chemokine CC motif receptor-like 2 (CCRL2) is a seven-transmembrane domain receptor that shares structural and functional similarities with the family of atypical chemokine receptors (ACKRs) (PMID: 28743719). CCRL2 does not appear to be a signaling receptor, but may have a role in modulating chemokine-triggered immune responses by capturing and internalizing CCL19 or by presenting RARRES2 ligand to CMKLR1, a functional signaling receptors. CCRL2 has been found on almost all hemopoietic cells, including monocytes, macrophages, polymorphonuclear neutrophils (PMNs), T cells, dendritic cells, natural killer cells, and CD34+ progenitor cells, with PMNs expressing the highest levels (PMID: 15188357). CCRL2 is also expressed by barrier cells, such as lymphatic and blood endothelial cells and bronchial and intestinal epithelial cells (PMID: 29056935).

Notable Publications

Author	Pubmed ID	Journal	Application
Deyu Li	31853188	Onco Targets Ther	WB
Ling Ding	31830143	PLoS Pathog	WB
Lunbo Tan	38361240	Hypertension	WB

Storage

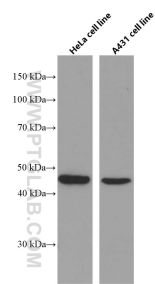
Storage:
Store at -20°C. Stable for one year after shipment.
Storage Buffer:
PBS with 0.02% sodium azide and 50% glycerol pH 7.3.
Aliquoting is unnecessary for -20°C storage

***** 20ul sizes contain 0.1% BSA**

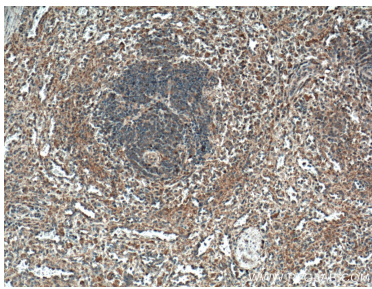
For technical support and original validation data for this product please contact:
T: 1 (888) 4PTGLAB (1-888-478-4522) (toll free in USA), or 1(312) 455-8498 (outside USA)
E: proteintech@ptglab.com
W: ptglab.com

This product is exclusively available under Proteintech Group brand and is not available to purchase from any other manufacturer.

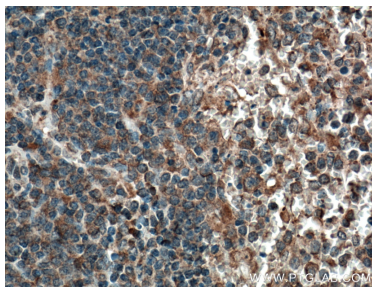
Selected Validation Data



HeLa cells and A431 cells were subjected to SDS PAGE followed by western blot with 66611-1-Ig (CCRL2 antibody) at dilution of 1:3000 incubated at room temperature for 1.5 hours.



Immunohistochemical analysis of paraffin-embedded human spleen tissue slide using 66611-1-Ig (CCRL2 antibody) at dilution of 1:800 (under 10x lens. Heat mediated antigen retrieval with Tris-EDTA buffer (pH 9.0).



Immunohistochemical analysis of paraffin-embedded human spleen tissue slide using 66611-1-Ig (CCRL2 antibody) at dilution of 1:800 (under 40x lens. Heat mediated antigen retrieval with Tris-EDTA buffer (pH 9.0).