

For Research Use Only

# CCRL2 Monoclonal antibody, PBS Only



Catalog Number: 66611-1-PBS

## Basic Information

<b>Catalog Number:</b> 66611-1-PBS	<b>GenBank Accession Number:</b> BC025717	<b>Purification Method:</b> Protein G purification
<b>Size:</b> 100ug, Concentration: 1 mg/ml by Nanodrop;	<b>GeneID (NCBI):</b> 9034	<b>CloneNo.:</b> 2C1E11
<b>Source:</b> Mouse	<b>UNIPROT ID:</b> O00421	
<b>Isotype:</b> IgG1	<b>Full Name:</b> chemokine (C-C motif) receptor-like 2	
<b>Immunogen Catalog Number:</b> AG4045	<b>Calculated MW:</b> 344 aa, 40 kDa	
	<b>Observed MW:</b> 47 kDa	

## Applications

**Tested Applications:**  
WB, IHC, Indirect ELISA

**Species Specificity:**  
Human

## Background Information

Chemokine CC motif receptor-like 2 (CCRL2) is a seven-transmembrane domain receptor that shares structural and functional similarities with the family of atypical chemokine receptors (ACKRs) (PMID: 28743719). CCRL2 does not appear to be a signaling receptor, but may have a role in modulating chemokine-triggered immune responses by capturing and internalizing CCL19 or by presenting RARRES2 ligand to CMKLR1, a functional signaling receptors. CCRL2 has been found on almost all hemopoietic cells, including monocytes, macrophages, polymorphonuclear neutrophils (PMNs), T cells, dendritic cells, natural killer cells, and CD34+ progenitor cells, with PMNs expressing the highest levels (PMID: 15188357). CCRL2 is also expressed by barrier cells, such as lymphatic and blood endothelial cells and bronchial and intestinal epithelial cells (PMID: 29056935).

## Storage

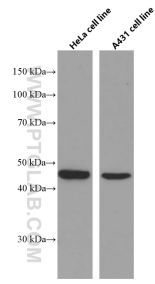
**Storage:**  
Store at -80°C.

**Storage Buffer:**  
PBS Only

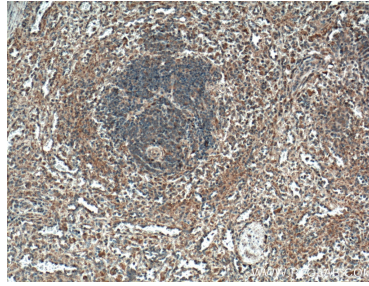
For technical support and original validation data for this product please contact:  
T: 1 (888) 4PTGLAB (1-888-478-4522) (toll free in USA), or 1(312) 455-8498 (outside USA)      E: [proteintech@ptglab.com](mailto:proteintech@ptglab.com)  
W: [ptglab.com](http://ptglab.com)

This product is exclusively available under Proteintech Group brand and is not available to purchase from any other manufacturer.

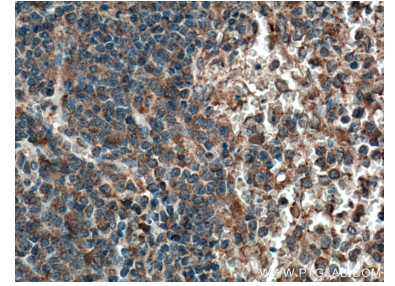
## Selected Validation Data



HeLa cells and A431 cells were subjected to SDS PAGE followed by western blot with 66611-1-Ig (CCRL2 antibody) at dilution of 1:3000 incubated at room temperature for 1.5 hours. This data was developed using the same antibody clone with 66611-1-PBS in a different storage buffer formulation.



Immunohistochemical analysis of paraffin-embedded human spleen tissue slide using 66611-1-Ig (CCRL2 antibody) at dilution of 1:800 (under 10x lens. Heat mediated antigen retrieval with Tris-EDTA buffer (pH 9.0). This data was developed using the same antibody clone with 66611-1-PBS in a different storage buffer formulation.



Immunohistochemical analysis of paraffin-embedded human spleen tissue slide using 66611-1-Ig (CCRL2 antibody) at dilution of 1:800 (under 40x lens. Heat mediated antigen retrieval with Tris-EDTA buffer (pH 9.0). This data was developed using the same antibody clone with 66611-1-PBS in a different storage buffer formulation.