

For Research Use Only

PPP3CB Monoclonal antibody

Catalog Number: 66614-1-Ig

Featured Product

1 Publications



Basic Information

Catalog Number:

66614-1-Ig

Size:

150ul, Concentration: 1600 ug/ml by Nanodrop and 1000 ug/ml by Bradford method using BSA as the standard;

Source:

Mouse

Isotype:

IgG1

Immunogen Catalog Number:

AG26987

GenBank Accession Number:

BC028049

GeneID (NCBI):

5532

UNIPROT ID:

P16298

Full Name:

protein phosphatase 3 (formerly 2B), catalytic subunit, beta isoform

Calculated MW:

525 aa, 59 kDa

Observed MW:

59 kDa

Purification Method:

Protein G purification

CloneNo.:

3C1A3

Recommended Dilutions:

WB 1:5000-1:10000

IF/ICC 1:200-1:800

Applications

Tested Applications:

WB, IF/ICC, ELISA

Cited Applications:

WB

Species Specificity:

human, mouse, rat, pig

Cited Species:

human, mouse

Positive Controls:

WB : pig brain tissue, NIH/3T3 cells, fetal human brain tissue, rat brain tissue, mouse brain tissue

IF/ICC : HeLa cells, U-251 cells

Background Information

PPP3CB is one of the three isoforms of the A subunit of calcineurin (CnA). Calcineurin is a calcium-dependent serine/threonine phosphatase. It consists of two subunits: subunit A (CnA) and subunit B (CnB). For CnA, three isoforms PPP3CA (CnA α), PPP3CB (CnA β) and PPP3CC (CnA γ) have been identified. PPP3CB is a calcium-dependent, calmodulin-stimulated protein phosphatase. It may have a role in the calmodulin activation of calcineurin.

Notable Publications

Author	Pubmed ID	Journal	Application
Zhiyuan Fang	36779633	Autophagy	WB

Storage

Storage:

Store at -20°C. Stable for one year after shipment.

Storage Buffer:

PBS with 0.02% sodium azide and 50% glycerol pH 7.3.

Aliquoting is unnecessary for -20°C storage

*** 20ul sizes contain 0.1% BSA

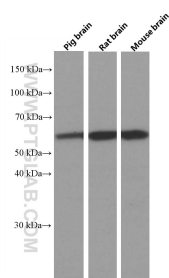
For technical support and original validation data for this product please contact:

T: 1 (888) 4PTGLAB (1-888-478-4522) (toll free in USA), or 1(312) 455-8498 (outside USA)

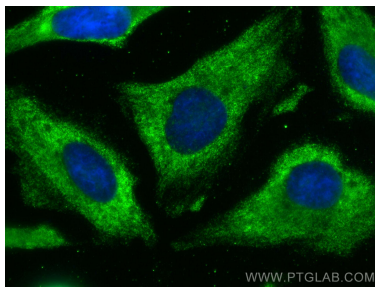
E: proteintech@ptglab.com
W: ptglab.com

This product is exclusively available under Proteintech Group brand and is not available to purchase from any other manufacturer.

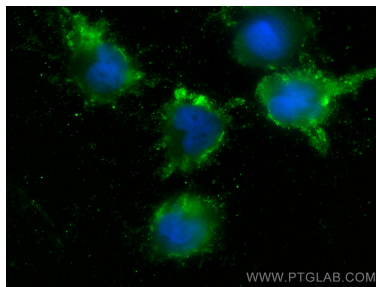
Selected Validation Data



Various lysates were subjected to SDS PAGE followed by western blot with 66614-1-Ig (PPP3CB antibody) at dilution of 1:10000 incubated at room temperature for 1.5 hours.



Immunofluorescent analysis of (-20°C Ethanol) fixed HeLa cells using PPP3CB antibody (66614-1-Ig, Clone: 3C1A3) at dilution of 1:400 and CoraLite®488-Conjugated AffiniPure Goat Anti-Mouse IgG(H+L) (SA00013-1).



Immunofluorescent analysis of (-20°C Ethanol) fixed U-251 cells using PPP3CB antibody (66614-1-Ig, Clone: 3C1A3) at dilution of 1:400 and CoraLite®488-Conjugated AffiniPure Goat Anti-Mouse IgG(H+L) (SA00013-1).