

For Research Use Only

# ACSL4/FACL4 Monoclonal antibody

Catalog Number: 66617-1-Ig

Featured Product

34 Publications



## Basic Information

Catalog Number:

66617-1-Ig

Size:

150ul, Concentration: 1000 ug/ml by Nanodrop;

Source:

Mouse

Isotype:

IgG1

Immunogen Catalog Number:

AG18085

GenBank Accession Number:

BC034959

GeneID (NCBI):

2182

UNIPROT ID:

O60488

Full Name:

acyl-CoA synthetase long-chain family member 4

Calculated MW:

711 aa, 79 kDa

Observed MW:

74 kDa

Purification Method:

Protein A purification

CloneNo.:

1H5D3

Recommended Dilutions:

WB 1:3000-1:10000

IHC 1:250-1:1000

## Applications

Tested Applications:

WB, IHC, FC (Intra), ELISA

Cited Applications:

WB, IHC

Species Specificity:

human

Cited Species:

human, bovine, sheep

**Note-IHC: suggested antigen retrieval with TE buffer pH 9.0; (\*) Alternatively, antigen retrieval may be performed with citrate buffer pH 6.0**

Positive Controls:

WB : HeLa cells, HepG2 cells, Caco-2 cells, COLO 320 cells, L02 cells, HT-29 cells

IHC : human cerebellum tissue,

FC (Intra) : HEK-293T cells,

## Notable Publications

Author	Pubmed ID	Journal	Application
Yongfei He	34790741	Ann Transl Med	WB
Haohao Wang	35801495	J Med Chem	WB
Tong Zhang	35121990	Nat Cancer	WB

## Storage

Storage:

Store at -20°C. Stable for one year after shipment.

Storage Buffer:

PBS with 0.02% sodium azide and 50% glycerol, pH7.3

Aliquoting is unnecessary for -20°C storage

\*\*\* 20ul sizes contain 0.1% BSA

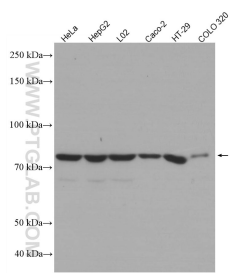
For technical support and original validation data for this product please contact:

T: 1 (888) 4PTGLAB (1-888-478-4522) (toll free in USA), or 1(312) 455-8498 (outside USA)

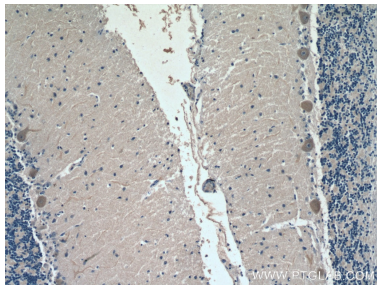
E: [proteintech@ptglab.com](mailto:proteintech@ptglab.com)  
W: [ptglab.com](http://ptglab.com)

This product is exclusively available under Proteintech Group brand and is not available to purchase from any other manufacturer.

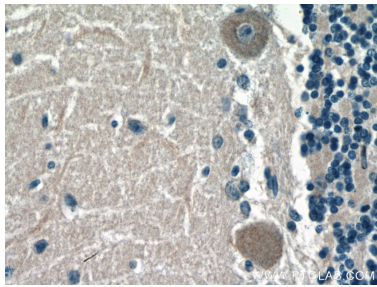
Selected Validation Data



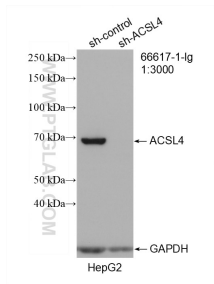
Various lysates were subjected to SDS PAGE followed by western blot with 66617-1-Ig (ACSL4 antibody) at dilution of 1:5000 incubated at room temperature for 1.5 hours.



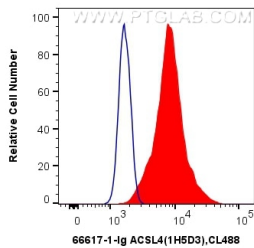
Immunohistochemical analysis of paraffin-embedded human cerebellum tissue slide using 66617-1-Ig (ACSL4 antibody) at dilution of 1:500 (under 10x lens).



Immunohistochemical analysis of paraffin-embedded human cerebellum tissue slide using 66617-1-Ig (ACSL4 antibody) at dilution of 1:500 (under 40x lens).



WB result of ACSL4 antibody (66617-1-Ig; 1:3000; incubated at room temperature for 1.5 hours) with sh-Control and sh-ACSL4 transfected HepG2 cells.



1X10<sup>6</sup> HEK-293T cells were intracellularly stained with 0.4 ug Anti-Human ACSL4 (66617-1-Ig, Clone:1H5D3) and CoraLite@488-Conjugated AffiniPure Goat Anti-Mouse IgG(H+L) at dilution 1:1000 (red), or 0.4 ug Control Antibody. Cells were fixed with 4% PFA and permeabilized with Flow Cytometry Perm Buffer (PF00011-C).