

For Research Use Only

SPI1 Monoclonal antibody

Catalog Number: 66618-2-Ig **5 Publications**



Basic Information

Catalog Number: 66618-2-Ig	GenBank Accession Number: NM_003120	Purification Method: Protein A purification
Size: 150ul , Concentration: 1000 ug/ml by Bradford method using BSA as the standard;	GeneID (NCBI): 6688	CloneNo.: 2H3D3
Source: Mouse	ENSEMBL Gene ID: ENSG00000066336	Recommended Dilutions: WB 1:2000-1:10000 IHC 1:2000-1:8000
Isotype: IgG1	UNIPROT ID: P17947	
	Full Name: spleen focus forming virus (SFFV) proviral integration oncogene spi1	
	Calculated MW: 31 kDa	
	Observed MW: 32-38 kDa	

Applications

Tested Applications: WB, IHC, ELISA	Positive Controls:
Cited Applications: WB, IHC, IF, ColP	WB : Daudi cells, Raji cells, RAW 264.7 cells, rat spleen tissue
Species Specificity: human, mouse, rat	IHC : Human tonsillitis tissue, mouse spleen tissue
Cited Species: human, mouse	
Note-IHC: suggested antigen retrieval with TE buffer pH 9.0; (*) Alternatively, antigen retrieval may be performed with citrate buffer pH 6.0	

Background Information

SPI1, also named as 31 kDa-transforming protein, is a 270 amino acid protein, which belongs to the ETS family. SPI1 is highly expressed in both FV-P and FV-A-induced erythro-leukemia cell lines that have undergone rearrangements of the SPI1 gene due to the insertion of SFFV.

Notable Publications

Author	Pubmed ID	Journal	Application
Huayi Feng	36477668	Discov Oncol	IHC, WB
Qiyi Yi	36497434	Cancers (Basel)	WB
Guofei Deng	39455096	J Immunother Cancer	IHC

Storage

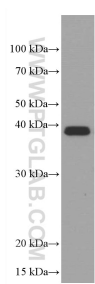
Storage:
Store at -20°C. Stable for one year after shipment.
Storage Buffer:
PBS with 0.02% sodium azide and 50% glycerol pH 7.3.
Aliquoting is unnecessary for -20°C storage

*** 20ul sizes contain 0.1% BSA

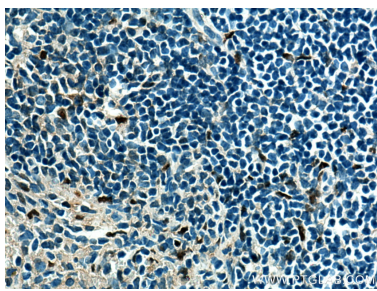
For technical support and original validation data for this product please contact:
T: 1 (888) 4PTGLAB (1-888-478-4522) (toll free in USA), or 1(312) 455-8498 (outside USA)
E: proteintech@ptglab.com
W: ptglab.com

This product is exclusively available under Proteintech Group brand and is not available to purchase from any other manufacturer.

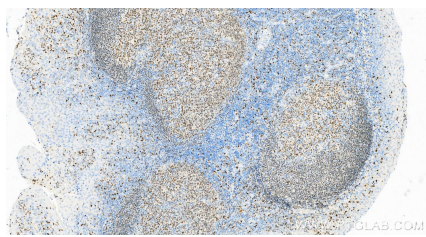
Selected Validation Data



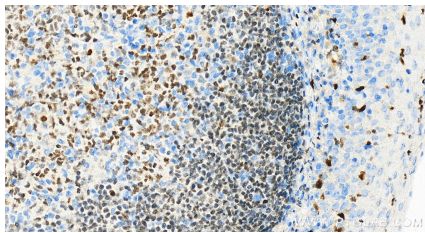
Daudi cells were subjected to SDS PAGE followed by western blot with 66618-2-Ig (SPI1 antibody) at dilution of 1:6000 incubated at room temperature for 1.5 hours.



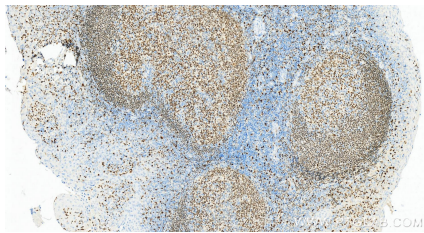
Immunohistochemical analysis of paraffin-embedded mouse spleen tissue slide using 66618-2-Ig (SPI1 antibody) at dilution of 1:1000 (under 40x lens). Heat mediated antigen retrieval with Tris-EDTA buffer (pH 9.0).



Immunohistochemical analysis of paraffin-embedded Human tonsillitis tissue slide using 66618-2-Ig (SPI1 antibody) at dilution of 1:4000 (under 20x lens).



Immunohistochemical analysis of paraffin-embedded Human tonsillitis tissue slide using 66618-2-Ig (SPI1 antibody) at dilution of 1:4000 (under 20x lens).



Immunohistochemical analysis of paraffin-embedded Human tonsillitis tissue slide using 66618-2-Ig (SPI1 antibody) at dilution of 1:2000 (under 20x lens).