

For Research Use Only

# SPI1 Monoclonal antibody, PBS Only

Catalog Number: 66618-2-PBS



## Basic Information

Catalog Number:

66618-2-PBS

Size:

100ug , Concentration: 1mg/ml by Nanodrop;

Source:

Mouse

Isotype:

IgG1

GenBank Accession Number:

NM\_003120

GeneID (NCBI):

6688

ENSEMBL Gene ID:

ENSG00000066336

UNIPROT ID:

P17947

Full Name:

spleen focus forming virus (SFFV)  
proviral integration oncogene spi1

Calculated MW:

31 kDa

Observed MW:

32-38 kDa

Purification Method:

Protein A purification

CloneNo.:

2H3D3

## Applications

Tested Applications:

WB, IHC, Indirect ELISA

Species Specificity:

human, mouse, rat

## Background Information

SPI1, also named as 31 kDa-transforming protein, is a 270 amino acid protein, which belongs to the ETS family. SPI1 is highly expressed in both FV-P and FV-A-induced erythro-leukemia cell lines that have undergone rearrangements of the SPI1 gene due to the insertion of SFFV.

## Storage

Storage:

Store at -80°C.

Storage Buffer:

PBS Only

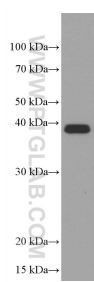
For technical support and original validation data for this product please contact:

T: 1 (888) 4PTGLAB (1-888-478-4522) (toll free in USA), or 1(312) 455-8498 (outside USA)

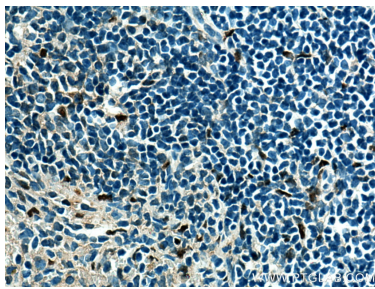
E: [proteintech@ptglab.com](mailto:proteintech@ptglab.com)  
W: [ptglab.com](http://ptglab.com)

This product is exclusively available under Proteintech Group brand and is not available to purchase from any other manufacturer.

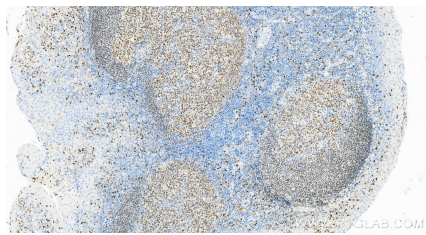
## Selected Validation Data



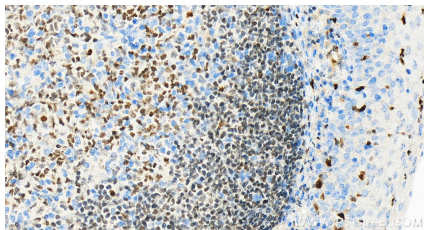
Daudi cells were subjected to SDS PAGE followed by western blot with 66618-2-Ig (SPI1 antibody) at dilution of 1:6000 incubated at room temperature for 1.5 hours. This data was developed using the same antibody clone with 66618-2-PBS in a different storage buffer formulation.



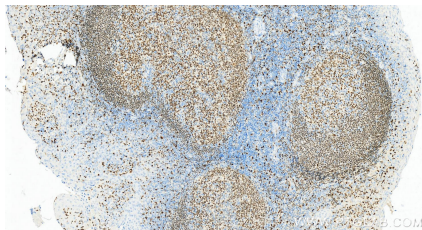
Immunohistochemical analysis of paraffin-embedded mouse spleen tissue slide using 66618-2-Ig (SPI1 antibody) at dilution of 1:1000 (under 40x lens). Heat mediated antigen retrieval with Tris-EDTA buffer (pH 9.0). This data was developed using the same antibody clone with 66618-2-PBS in a different storage buffer formulation.



Immunohistochemical analysis of paraffin-embedded Human tonsillitis tissue slide using 66618-2-Ig (SPI1 antibody) at dilution of 1:4000 (under 20x lens). This data was developed using the same antibody clone with 66618-2-PBS in a different storage buffer formulation.



Immunohistochemical analysis of paraffin-embedded Human tonsillitis tissue slide using 66618-2-Ig (SPI1 antibody) at dilution of 1:4000 (under 20x lens). This data was developed using the same antibody clone with 66618-2-PBS in a different storage buffer formulation.



Immunohistochemical analysis of paraffin-embedded Human tonsillitis tissue slide using 66618-2-Ig (SPI1 antibody) at dilution of 1:2000 (under 20x lens). This data was developed using the same antibody clone with 66618-2-PBS in a different storage buffer formulation.