

For Research Use Only

ADAM10 Monoclonal antibody

Catalog Number: 66620-1-Ig **1 Publications**



Basic Information

Catalog Number: 66620-1-Ig	GenBank Accession Number: BC126253	Purification Method: Protein A purification
Size: 150ul , Concentration: 1500 ug/ml by 102 Nanodrop and 1000 ug/ml by Bradford method using BSA as the standard;	GeneID (NCBI): O14672	CloneNo.: 2A6B7
Source: Mouse	UNIPROT ID: O14672	Recommended Dilutions: WB 1:1000-1:6000 IHC 1:1000-1:4000
Isotype: IgG1	Full Name: ADAM metalloproteinase domain 10	
Immunogen Catalog Number: AG23062	Calculated MW: 748 aa, 84 kDa	
	Observed MW: 90-95 kDa	

Applications

Tested Applications: WB, IHC, ELISA	Positive Controls: WB : THP-1 cells, MCF-7 cells, Jurkat cells, K-562 cells IHC : human prostate cancer tissue,
Cited Applications: WB	
Species Specificity: Human	
Cited Species: human, mouse	
Note-IHC: suggested antigen retrieval with TE buffer pH 9.0; (*) Alternatively, antigen retrieval may be performed with citrate buffer pH 6.0	

Background Information

ADAM10, a member of the ADAM (a disintegrin and metalloprotease) family, is widely expressed in the brain, the spinal cord, and the visual system during development. MW of premature ADAM10 is 90 kDa and mature ADAM10 is 60-70 kDa (PMID: 24404179).

Notable Publications

Author	Pubmed ID	Journal	Application
Shuang Sun	39117070	Arch Biochem Biophys	WB

Storage

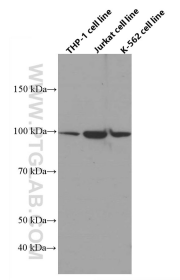
Storage:
Store at -20°C. Stable for one year after shipment.
Storage Buffer:
PBS with 0.02% sodium azide and 50% glycerol pH 7.3.
Aliquoting is unnecessary for -20°C storage

*** 20ul sizes contain 0.1% BSA

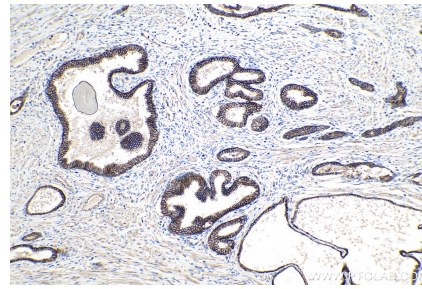
For technical support and original validation data for this product please contact:
T: 1 (888) 4PTGLAB (1-888-478-4522) (toll free in USA), or 1(312) 455-8498 (outside USA)
E: proteintech@ptglab.com
W: ptglab.com

This product is exclusively available under Proteintech Group brand and is not available to purchase from any other manufacturer.

Selected Validation Data



Various lysates were subjected to SDS PAGE followed by western blot with 66620-1-Ig (ADAM10 antibody) at dilution of 1:3000 incubated at room temperature for 1.5 hours.



Immunohistochemical analysis of paraffin-embedded human prostate cancer tissue slide using 66620-1-Ig (ADAM10 antibody) at dilution of 1:2000 (under 10x lens). Heat mediated antigen retrieval with Tris-EDTA buffer (pH 9.0).