

For Research Use Only



ADAM10 Monoclonal antibody, PBS Only

Catalog Number: 66620-1-PBS

Basic Information

Catalog Number: 66620-1-PBS	GenBank Accession Number: BC126253	Purification Method: Protein A purification
Size: 100ug , Concentration: 1 mg/ml by Nanodrop;	GeneID (NCBI): 102	CloneNo.: 2A6B7
Source: Mouse	UNIPROT ID: O14672	
Isotype: IgG1	Full Name: ADAM metalloproteinase domain 10	
Immunogen Catalog Number: AG23062	Calculated MW: 748 aa, 84 kDa	
	Observed MW: 90-95 kDa	

Applications

Tested Applications:
WB, IHC, Indirect ELISA

Species Specificity:
Human

Background Information

ADAM10, a member of the ADAM (a disintegrin and metalloprotease) family, is widely expressed in the brain, the spinal cord, and the visual system during development. MW of premature ADAM10 is 90 kDa and mature ADAM10 is 60-70 kDa (PMID: 24404179).

Storage

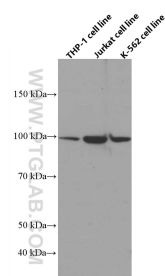
Storage:
Store at -80°C.

Storage Buffer:
PBS Only

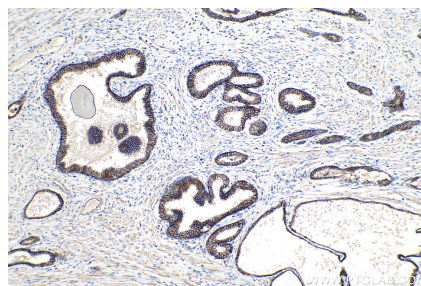
For technical support and original validation data for this product please contact:
T: 1 (888) 4PTGLAB (1-888-478-4522) (toll free in USA), or 1(312) 455-8498 (outside USA)
E: proteintech@ptglab.com
W: ptglab.com

This product is exclusively available under Proteintech Group brand and is not available to purchase from any other manufacturer.

Selected Validation Data



Various lysates were subjected to SDS PAGE followed by western blot with 66620-1-Ig (ADAM10 antibody) at dilution of 1:3000 incubated at room temperature for 1.5 hours. This data was developed using the same antibody clone with 66620-1-PBS in a different storage buffer formulation.



Immunohistochemical analysis of paraffin-embedded human prostate cancer tissue slide using 66620-1-Ig (ADAM10 antibody) at dilution of 1:2000 (under 10x lens). Heat mediated antigen retrieval with Tris-EDTA buffer (pH 9.0). This data was developed using the same antibody clone with 66620-1-PBS in a different storage buffer formulation.