

For Research Use Only

# GSTA1 Monoclonal antibody

Catalog Number: 66624-1-Ig **2 Publications**



## Basic Information

<b>Catalog Number:</b> 66624-1-Ig	<b>GenBank Accession Number:</b> BC053578	<b>Purification Method:</b> Protein G purification
<b>Size:</b> 150ul , Concentration: 1500 ug/ml by Nanodrop and 1000 ug/ml by Bradford method using BSA as the standard;	<b>GeneID (NCBI):</b> 2938	<b>CloneNo.:</b> 1E1F4
<b>Source:</b> Mouse	<b>UNIPROT ID:</b> P08263	<b>Recommended Dilutions:</b> WB 1:5000-1:50000 IHC 1:2500-1:10000 IF/ICC 1:50-1:500
<b>Isotype:</b> IgG1	<b>Full Name:</b> glutathione S-transferase alpha 1	
<b>Immunogen Catalog Number:</b> AG6084	<b>Calculated MW:</b> 26 kDa	
	<b>Observed MW:</b> 26 kDa	

## Applications

**Tested Applications:**  
WB, IHC, IF/ICC, ELISA

**Cited Applications:**  
WB

**Species Specificity:**  
Human, mouse, rat, pig

**Cited Species:**  
human, mouse, pig

**Note-IHC: suggested antigen retrieval with TE buffer pH 9.0; (\*) Alternatively, antigen retrieval may be performed with citrate buffer pH 6.0**

**Positive Controls:**

**WB :** pig liver tissue, human liver tissue, rat kidney tissue, mouse hepatocytes, human testis tissue, rat liver tissue, mouse liver tissue

**IHC :** human kidney tissue, human liver cancer tissue

**IF/ICC :** HepG2 cells,

## Notable Publications

Author	Pubmed ID	Journal	Application
Haoxuan Ding	33683742	J Anim Physiol Anim Nutr (Berl)	WB
Jing Jiang	38791126	Int J Mol Sci	WB

## Storage

**Storage:**

Store at -20°C. Stable for one year after shipment.

**Storage Buffer:**

PBS with 0.02% sodium azide and 50% glycerol pH 7.3.

Aliquoting is unnecessary for -20°C storage

**\*\*\* 20ul sizes contain 0.1% BSA**

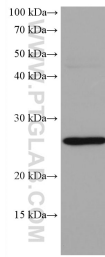
For technical support and original validation data for this product please contact:

T: 1 (888) 4PTGLAB (1-888-478-4522) (toll free in USA), or 1(312) 455-8498 (outside USA)

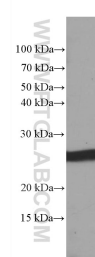
E: proteintech@ptglab.com  
W: ptglab.com

**This product is exclusively available under Proteintech Group brand and is not available to purchase from any other manufacturer.**

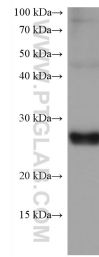
## Selected Validation Data



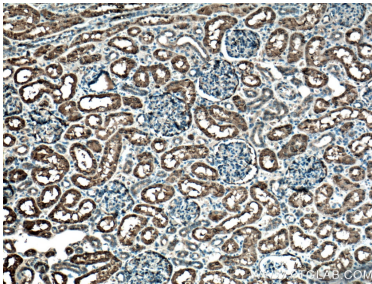
mouse liver tissue were subjected to SDS PAGE followed by western blot with 66624-1-Ig (GSTA1 antibody) at dilution of 1:20000 incubated at room temperature for 1.5 hours.



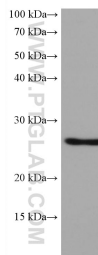
pig liver tissue were subjected to SDS PAGE followed by western blot with 66624-1-Ig (GSTA1 antibody) at dilution of 1:20000 incubated at room temperature for 1.5 hours.



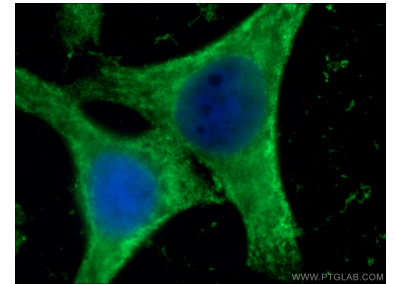
rat liver tissue were subjected to SDS PAGE followed by western blot with 66624-1-Ig (GSTA1 antibody) at dilution of 1:20000 incubated at room temperature for 1.5 hours.



Immunohistochemical analysis of paraffin-embedded human kidney tissue slide using 66624-1-Ig (GSTA1 antibody) at dilution of 1:5000 (under 10x lens. Heat mediated antigen retrieval with Tris-EDTA buffer (pH 9.0).



human testis tissue were subjected to SDS PAGE followed by western blot with 66624-1-Ig (GSTA1 antibody) at dilution of 1:20000 incubated at room temperature for 1.5 hours.



Immunofluorescent analysis of (-20°C Ethanol) fixed HepG2 cells using 66624-1-Ig (GSTA1 antibody) at dilution of 1:200 and Alexa Fluor 488-conjugated AffiniPure Goat Anti-Mouse IgG(H+L).