

RIC8A Monoclonal antibody

Catalog Number: 66625-1-Ig

Basic Information

Catalog Number: 66625-1-Ig	GenBank Accession Number: BC011821	Purification Method: Protein G purification
Size: 150ul , Concentration: 1400 µg/ml by Nanodrop and 1000 µg/ml by Bradford method using BSA as the standard;	GeneID (NCBI): 60626	CloneNo.: 1E3B11
Source: Mouse	Full Name: resistance to inhibitors of cholinesterase 8 homolog A (C. elegans)	Recommended Dilutions: WB 1:2000-1:10000 IP 0.5-4.0 ug for IP and 1:1000-1:4000 for WB
Isotype: IgG1	Calculated MW: 60 kDa	IHC 1:250-1:1000 IF 1:200-1:800
Immunogen Catalog Number: AG1593	Observed MW: 65 kDa	

Applications

Tested Applications: IF, IHC, IP, WB, ELISA	Positive Controls:
Species Specificity: Human, Rat, Mouse	WB : HeLa cells, A431 cells, HEK-293 cells, Jurkat cells, HSC-T6 cells, RAW 264.7 cells, NIH/3T3 cells
Note-IHC: suggested antigen retrieval with TE buffer pH 9.0; (*) Alternatively, antigen retrieval may be performed with citrate buffer pH 6.0	IP : HEK-293 cells,
	IHC : mouse brain tissue, human pancreas tissue
	IF : mouse brain tissue,

Background Information

RIC8A, also named as synembryn-A, is a Guanine nucleotide exchange factor (GEF), which can activate some, but not all, G-alpha proteins by exchanging bound GDP for free GTP. It is involved in regulation of microtubule pulling forces during mitotic movement of chromosomes by stimulating G(i)-alpha protein, possibly leading to release G(i)-alpha-GTP and NuMA proteins from the NuMA-GPSM2-G(i)-alpha-GDP complex. RIC8A also acts as an activator for G(q)-alpha (GNAQ) protein by enhancing the G(q)-coupled receptor-mediated ERK activation.

Storage

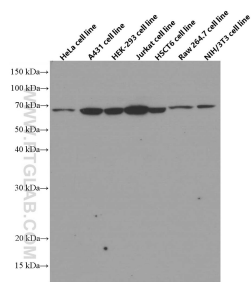
Storage:
Store at -20°C. Stable for one year after shipment.
Storage Buffer:
PBS with 0.02% sodium azide and 50% glycerol pH 7.3.
Aliquoting is unnecessary for -20°C storage

*** 20ul sizes contain 0.1% BSA

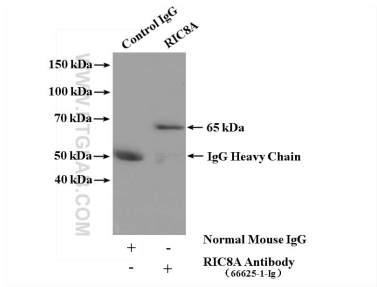
For technical support and original validation data for this product please contact:
T: 1 (888) 4PTGLAB (1-888-478-4522) (toll free in USA), or 1(312) 455-8498 (outside USA)
E: proteintech@ptglab.com
W: ptglab.com

This product is exclusively available under Proteintech Group brand and is not available to purchase from any other manufacturer.

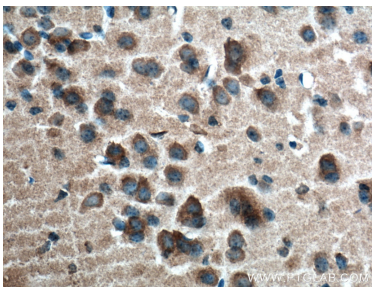
Selected Validation Data



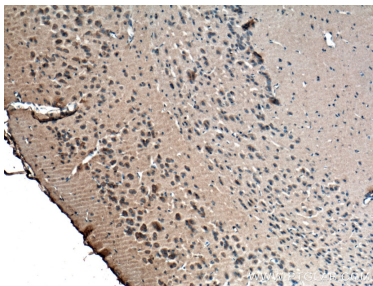
Various lysates were subjected to SDS PAGE followed by western blot with 66625-1-Ig (RIC8A antibody) at dilution of 1:5000 incubated at room temperature for 1.5 hours.



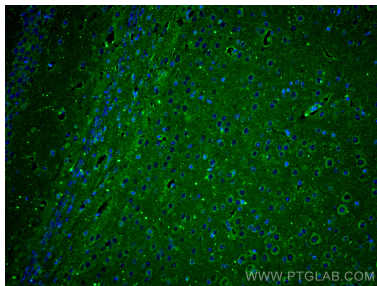
IP result of anti-RIC8A (IP:66625-1-Ig, 5ug; Detection:66625-1-Ig 1:2000) with HEK-293 cells lysate 4000 ug.



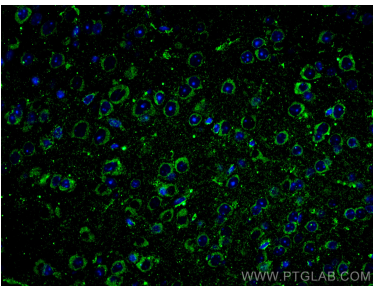
Immunohistochemical analysis of paraffin-embedded mouse brain tissue slide using 66625-1-Ig (RIC8A antibody) at dilution of 1:500 (under 10x lens. Heat mediated antigen retrieval with Tris-EDTA buffer (pH 9.0).



Immunohistochemical analysis of paraffin-embedded mouse brain tissue slide using 66625-1-Ig (RIC8A antibody) at dilution of 1:500 (under 40x lens. Heat mediated antigen retrieval with Tris-EDTA buffer (pH 9.0).



Immunofluorescent analysis of (4% PFA) fixed mouse brain tissue using RIC8A antibody (66625-1-Ig, Clone: 1E3B11) at dilution of 1:400 and CoraLite®488-Conjugated AffiniPure Goat Anti-Mouse IgG(H+L).



Immunofluorescent analysis of (4% PFA) fixed mouse brain tissue using RIC8A antibody (66625-1-Ig, Clone: 1E3B11) at dilution of 1:400 and CoraLite®488-Conjugated AffiniPure Goat Anti-Mouse IgG(H+L).