

For Research Use Only

RIC8A Monoclonal antibody, PBS Only



Catalog Number: 66625-1-PBS

Basic Information

Catalog Number: 66625-1-PBS	GenBank Accession Number: BC011821	Purification Method: Protein G purification
Size: 100ug , Concentration: 1 mg/ml by Nanodrop;	GeneID (NCBI): 60626	CloneNo.: 1E3B11
Source: Mouse	UNIPROT ID: Q9NPQ8	
Isotype: IgG1	Full Name: resistance to inhibitors of cholinesterase 8 homolog A (C. elegans)	
Immunogen Catalog Number: AG1593	Calculated MW: 60 kDa	
	Observed MW: 65 kDa	

Applications

Tested Applications:
WB, IP, IF, IHC, Indirect ELISA

Species Specificity:
Human, Rat, Mouse

Background Information

RIC8A, also named as synembryn-A, is a Guanine nucleotide exchange factor (GEF), which can activate some, but not all, G-alpha proteins by exchanging bound GDP for free GTP. It is involved in regulation of microtubule pulling forces during mitotic movement of chromosomes by stimulating G(i)-alpha protein, possibly leading to release G(i)-alpha-GTP and NuMA proteins from the NuMA-GPSM2-G(i)-alpha-GDP complex. RIC8A also acts as an activator for G(q)-alpha (GNAQ) protein by enhancing the G(q)-coupled receptor-mediated ERK activation.

Storage

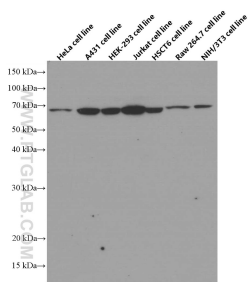
Storage:
Store at -80°C.

Storage Buffer:
PBS Only

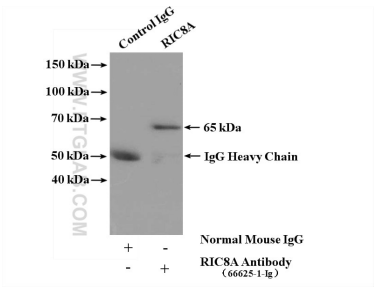
For technical support and original validation data for this product please contact:
T: 1 (888) 4PTGLAB (1-888-478-4522) (toll free in USA), or 1(312) 455-8498 (outside USA)
E: proteintech@ptglab.com
W: ptglab.com

This product is exclusively available under Proteintech Group brand and is not available to purchase from any other manufacturer.

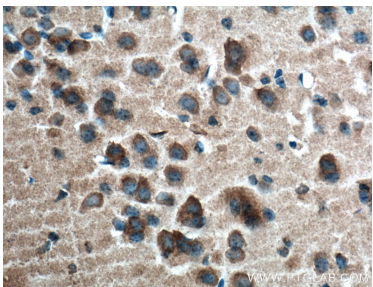
Selected Validation Data



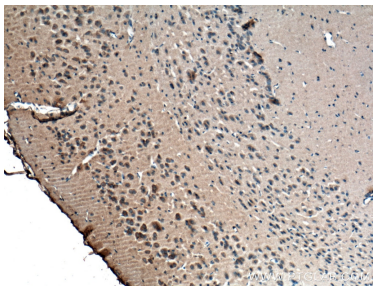
Various lysates were subjected to SDS PAGE followed by western blot with 66625-1-Ig (RIC8A antibody) at dilution of 1:5000 incubated at room temperature for 1.5 hours. This data was developed using the same antibody clone with 66625-1-PBS in a different storage buffer formulation.



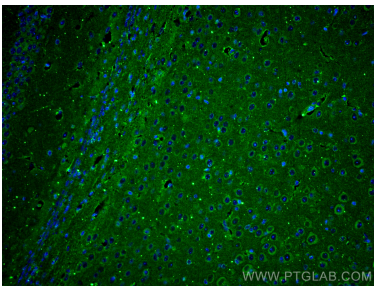
IP result of anti-RIC8A (IP:66625-1-Ig, 5ug; Detection:66625-1-Ig 1:2000) with HEK-293 cells lysate 4000 ug. This data was developed using the same antibody clone with 66625-1-PBS in a different storage buffer formulation.



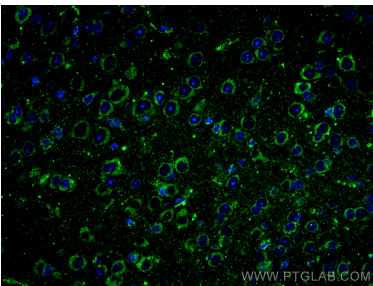
Immunohistochemical analysis of paraffin-embedded mouse brain tissue slide using 66625-1-Ig (RIC8A antibody) at dilution of 1:500 (under 10x lens. Heat mediated antigen retrieval with Tris-EDTA buffer (pH 9.0). This data was developed using the same antibody clone with 66625-1-PBS in a different storage buffer formulation.



Immunohistochemical analysis of paraffin-embedded mouse brain tissue slide using 66625-1-Ig (RIC8A antibody) at dilution of 1:500 (under 40x lens. Heat mediated antigen retrieval with Tris-EDTA buffer (pH 9.0). This data was developed using the same antibody clone with 66625-1-PBS in a different storage buffer formulation.



Immunofluorescent analysis of (4% PFA) fixed mouse brain tissue using RIC8A antibody (66625-1-Ig, Clone: 1E3B11) at dilution of 1:400 and CoraLite®488-Conjugated AffiniPure Goat Anti-Mouse IgG(H+L). This data was developed using the same antibody clone with 66625-1-PBS in a different storage buffer formulation.



Immunofluorescent analysis of (4% PFA) fixed mouse brain tissue using RIC8A antibody (66625-1-Ig, Clone: 1E3B11) at dilution of 1:400 and CoraLite®488-Conjugated AffiniPure Goat Anti-Mouse IgG(H+L). This data was developed using the same antibody clone with 66625-1-PBS in a different storage buffer formulation.