

For Research Use Only

FAF2 Monoclonal antibody, PBS Only

Catalog Number: 66629-1-PBS

Featured Product



Basic Information

Catalog Number: 66629-1-PBS	GenBank Accession Number: BC014001	Purification Method: Protein G purification
Size: 100ug , Concentration: 1 mg/ml by Nanodrop;	GeneID (NCBI): 23197	CloneNo.: 3H6D2
Source: Mouse	UNIPROT ID: Q96CS3	
Isotype: IgG1	Full Name: Fas associated factor family member 2	
Immunogen Catalog Number: AG21536	Calculated MW: 445 aa, 53 kDa	
	Observed MW: 51 kDa	

Applications

Tested Applications:
WB, IHC, Indirect ELISA

Species Specificity:
Human, mouse

Background Information

Protein ETEA (FAF2, or UBXD8) is a homolog to Fas-associated factor 1 (FAF1), which is involved in Fas-mediated apoptosis. ETEA protein directly interacts with and negatively regulates neurofibromin. ETEA contains both UBA and UBX domains and overexpression of ETEA downregulates neurofibromin in human cells. It may play a role in the translocation of terminally misfolded proteins from the endoplasmic reticulum lumen to the cytoplasm and their degradation by the proteasome. ETEA is highly expressed in peripheral blood of patients with atopic dermatitis (AD) compared to normal individuals, and may regulate the resistance to apoptosis that is observed in T cells and eosinophils of AD patients.

Storage

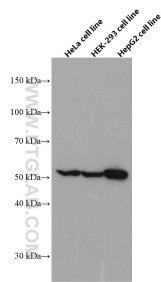
Storage:
Store at -80°C.

Storage Buffer:
PBS Only

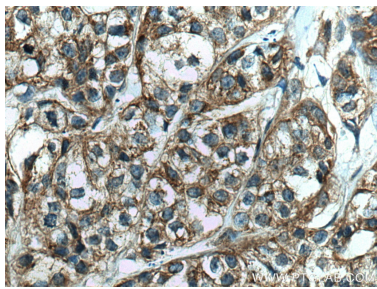
For technical support and original validation data for this product please contact:
T: 1 (888) 4PTGLAB (1-888-478-4522) (toll free in USA), or 1(312) 455-8498 (outside USA)
E: proteintech@ptglab.com
W: ptglab.com

This product is exclusively available under Proteintech Group brand and is not available to purchase from any other manufacturer.

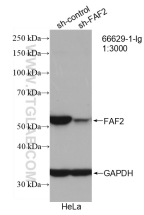
Selected Validation Data



HeLa cells were subjected to SDS PAGE followed by western blot with 66629-1-Ig (FAF2 antibody) at dilution of 1:5000 incubated at room temperature for 1.5 hours. This data was developed using the same antibody clone with 66629-1-PBS in a different storage buffer formulation.



Immunohistochemical analysis of paraffin-embedded human breast cancer tissue slide using 66629-1-Ig (FAF2 antibody) at dilution of 1:500 (under 40x lens). Heat mediated antigen retrieval with Tris-EDTA buffer (pH 9.0). This data was developed using the same antibody clone with 66629-1-PBS in a different storage buffer formulation.



WB result of FAF2 antibody (66629-1-Ig; 1:3000; incubated at room temperature for 1.5 hours) with sh-Control and sh-FAF2 transfected HeLa cells. This data was developed using the same antibody clone with 66629-1-PBS in a different storage buffer formulation.