

For Research Use Only

# KAP1 Monoclonal antibody

Catalog Number: 66630-1-Ig

Featured Product

11 Publications



## Basic Information

### Catalog Number:

66630-1-Ig

### Size:

150ul, Concentration: 1500 ug/ml by Nanodrop and 1000 ug/ml by Bradford method using BSA as the standard;

### Source:

Mouse

### Isotype:

IgG2a

### Immunogen Catalog Number:

AG7519

### GenBank Accession Number:

BC004978

### GeneID (NCBI):

10155

### UNIPROT ID:

Q13263

### Full Name:

tripartite motif-containing 28

### Calculated MW:

89 kDa

### Observed MW:

100 kDa

### Purification Method:

Protein A purification

### CloneNo.:

1B9G12

### Recommended Dilutions:

WB 1:20000-1:100000

IP 0.5-4.0 ug for 1.0-3.0 mg of total protein lysate

IHC 1:200-1:800

IF/ICC 1:400-1:1600

## Applications

### Tested Applications:

WB, IHC, IF/ICC, IP, ELISA

### Cited Applications:

WB, IF, ChIP

### Species Specificity:

Human

### Cited Species:

human, mouse

### Positive Controls:

WB : HeLa cells, HepG2 cells

IP : HeLa cells,

IHC : human breast cancer tissue, human colon cancer tissue

IF/ICC : HepG2 cells,

**Note-IHC: suggested antigen retrieval with TE buffer pH 9.0; (\*) Alternatively, antigen retrieval may be performed with citrate buffer pH 6.0**

## Background Information

KAP1, also named as TRIM28 or RNF96, is a 835 amino acid protein, which contain one RING-type zinc finger, one PHD-type zinc finger, one bromo domain and two B box-type zinc fingers. KAP1 localizes in the nucleus and belongs to the TRIM/RBCC family. KAP1 is a nuclear corepressor for KRAB domain-containing zinc finger proteins and mediates gene silencing by recruiting CHD3, a subunit of the nucleosome remodeling and deacetylation (NuRD) complex, and SETDB1 to the promoter regions of KRAB target genes. KAP1 is expressed in all tissues tested including spleen, thymus, prostate, testis, ovary, small intestine, colon and peripheral blood leukocytes. The calculated molecular weight of KAP1 is 89 kDa, but modified KAP1 is about 100 kDa. (PMID: 18590578)

## Notable Publications

Author	Pubmed ID	Journal	Application
Guido A Stoll	36341546	EMBO J	IF
Xiancai Ma	30652970	Elife	WB
Qiuyu Tan	36476351	BMC Pulm Med	WB

## Storage

### Storage:

Store at -20°C. Stable for one year after shipment.

### Storage Buffer:

PBS with 0.02% sodium azide and 50% glycerol pH 7.3.

Aliquoting is unnecessary for -20°C storage

\*\*\* 20ul sizes contain 0.1% BSA

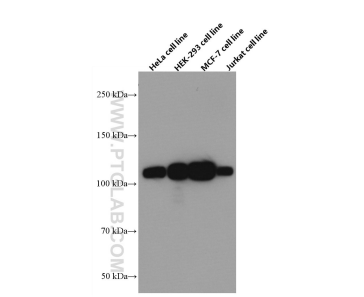
For technical support and original validation data for this product please contact:

T: 1 (888) 4PTGLAB (1-888-478-4522) (toll free in USA), or 1(312) 455-8498 (outside USA)

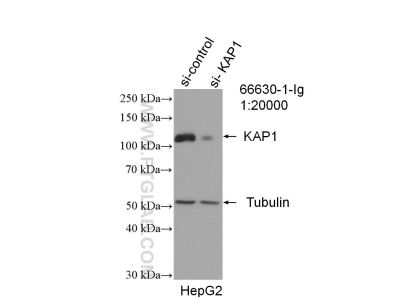
E: proteintech@ptglab.com  
W: ptglab.com

This product is exclusively available under Proteintech Group brand and is not available to purchase from any other manufacturer.

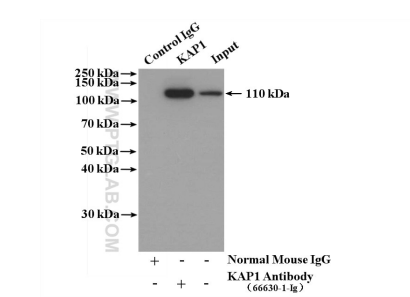
Selected Validation Data



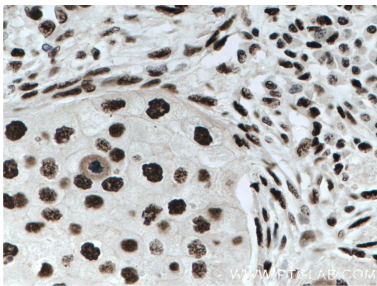
Various lysates were subjected to SDS PAGE followed by western blot with 66630-1-Ig (KAP1 antibody) at dilution of 1:50000 incubated at room temperature for 1.5 hours.



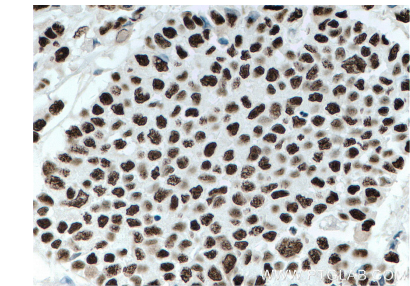
WB result of KAP1 antibody (66630-1-Ig; 1:20000; incubated at room temperature for 1.5 hours) with sh-Control and sh-KAP1 transfected HepG2 cells.



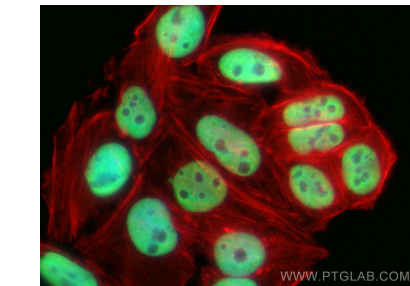
IP result of anti-KAP1 (IP:66630-1-Ig, 5ug; Detection:66630-1-Ig 1:1000) with HeLa cells lysate 4000 ug.



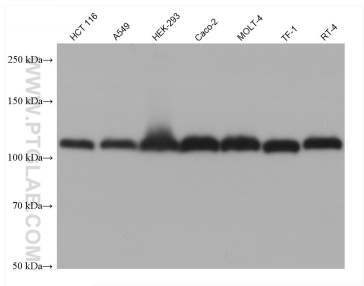
Immunohistochemical analysis of paraffin-embedded human breast cancer tissue slide using 66630-1-Ig (KAP1 antibody) at dilution of 1:400 (under 40x lens. Heat mediated antigen retrieval with Tris-EDTA buffer (pH 9.0).



Immunohistochemical analysis of paraffin-embedded human colon cancer tissue slide using 66630-1-Ig (KAP1 antibody) at dilution of 1:400 (under 40x lens. Heat mediated antigen retrieval with Tris-EDTA buffer (pH 9.0).



Immunofluorescent analysis of (4% PFA) fixed HepG2 cells using KAP1 antibody (66630-1-Ig, Clone: 1B9G12 ) at dilution of 1:800 and Multi-rAb CoraLite ® Plus 488-Goat Anti-Mouse Recombinant Secondary Antibody (H+L) (RGAM002), CL594-phalloidin (red).



Various lysates were subjected to SDS PAGE followed by western blot with 66630-1-Ig (KAP1 antibody) at dilution of 1:50000 incubated at room temperature for 1.5 hours.