

For Research Use Only

# ROCK2 Monoclonal antibody

Catalog Number: 66633-1-Ig

Featured Product

6 Publications



## Basic Information

<b>Catalog Number:</b> 66633-1-Ig	<b>GenBank Accession Number:</b> BC111801	<b>Purification Method:</b> Protein A purification
<b>Size:</b> 150ul, Concentration: 1200 µg/ml by Nanodrop and 1000 µg/ml by Bradford method using BSA as the standard;	<b>GeneID (NCBI):</b> 9475	<b>CloneNo.:</b> 1C7B8
<b>Source:</b> Mouse	<b>Full Name:</b> Rho-associated, coiled-coil containing protein kinase 2	<b>Recommended Dilutions:</b> WB 1:5000-1:50000 IHC 1:250-1:1000
<b>Isotype:</b> IgG2b	<b>Calculated MW:</b> 77 kDa, 161 kDa	
<b>Immunogen Catalog Number:</b> AG16330	<b>Observed MW:</b> 161 kDa	

## Applications

<b>Tested Applications:</b> IHC, WB, ELISA	<b>Positive Controls:</b> WB : HeLa cells, HEK-293 cells, MCF-7 cells, Jurkat cells, HSC-T6 cells, NIH/3T3 cells
<b>Cited Applications:</b> IHC, WB	<b>IHC :</b> human liver cancer tissue,
<b>Species Specificity:</b> Human, Rat, Mouse	
<b>Cited Species:</b> human, mouse, rat	

**Note-IHC: suggested antigen retrieval with TE buffer pH 9.0; (\*) Alternatively, antigen retrieval may be performed with citrate buffer pH 6.0**

## Background Information

ROCK2 is a serine/threonine kinase that regulates cytokinesis, smooth muscle contraction, the formation of actin stress fibers and focal adhesions, and the activation of the c-fos serum response element. It is an isozyme of ROCK1, is a target for the small GTPase Rho. ROCK2 is localized in both cytoplasm and nucleus, and the nucleus-localized ROCK2 can target p300 for phosphorylation to regulate its acetyltransferase activity (PMID:16574662). This antibody is specific to ROCK2.

## Notable Publications

Author	Pubmed ID	Journal	Application
Mingyue Zheng	31150636	Exp Eye Res	WB
Wenpeng Cao	35322742	Bioengineered	IHC
Fangfei Li	35173550	Int J Biol Sci	WB

## Storage

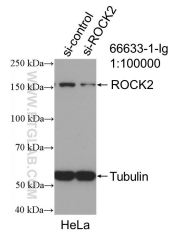
**Storage:**  
Store at -20°C. Stable for one year after shipment.  
**Storage Buffer:**  
PBS with 0.02% sodium azide and 50% glycerol pH 7.3.  
Aliquoting is unnecessary for -20°C storage

\*\*\* 20ul sizes contain 0.1% BSA

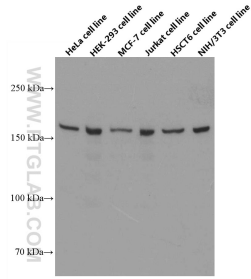
For technical support and original validation data for this product please contact:  
T: 1 (888) 4PTGLAB (1-888-478-4522) (toll free in USA), or 1(312) 455-8498 (outside USA)  
E: proteintech@ptglab.com  
W: ptglab.com

This product is exclusively available under Proteintech Group brand and is not available to purchase from any other manufacturer.

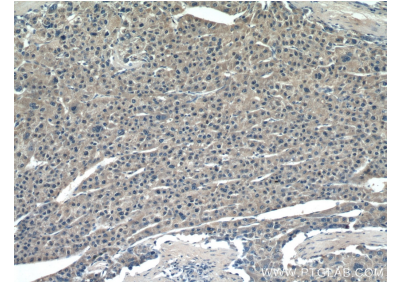
## Selected Validation Data



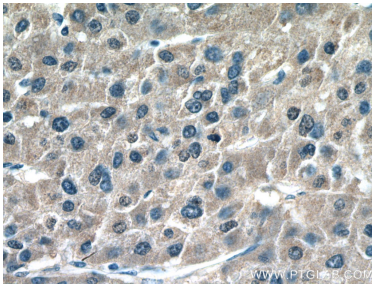
WB result of ROCK2 antibody (66633-1-Ig; 1:100000; incubated at room temperature for 1.5 hours) with sh-Control and sh-ROCK2 transfected HeLa cells.



Various lysates were subjected to SDS PAGE followed by western blot with 66633-1-Ig (ROCK2 antibody) at dilution of 1:20000 incubated at room temperature for 1.5 hours.



Immunohistochemical analysis of paraffin-embedded human liver cancer tissue slide using 66633-1-Ig (ROCK2 antibody) at dilution of 1:500 (under 10x lens).



Immunohistochemical analysis of paraffin-embedded human liver cancer tissue slide using 66633-1-Ig (ROCK2 antibody) at dilution of 1:500 (under 40x lens).