

For Research Use Only

C5 Monoclonal antibody, PBS Only

Catalog Number: 66634-1-PBS



Basic Information

Catalog Number: 66634-1-PBS	GenBank Accession Number: BC113740	Purification Method: Protein A purification
Size: 100ug , Concentration: 1mg/ml by Nanodrop;	GeneID (NCBI): 727	CloneNo.: 2G8C9
Source: Mouse	UNIPROT ID: P01031	
Isotype: IgG2a	Full Name: complement component 5	
Immunogen Catalog Number: AG17882	Calculated MW: 1676 aa, 188 kDa	
	Observed MW: 115 kDa	

Applications

Tested Applications:
WB, IF/ICC, FC (Intra), ELISA

Species Specificity:
human

Background Information

The complement system is an important effector that bridges the innate and adaptive immune systems. The fifth component of complement, C5, is part of the complement cascade and plays an important role in inflammation and cell killing. It consists of disulfide-linked alpha and beta polypeptide chains but can be cleaved into two active peptides (C5a and C5b) by C5 convertases. Mutations and defects in C5 are associated with severe recurrent infections. (PMID: 20010915; PMID: 8011297; PMID: 6554279)

Storage

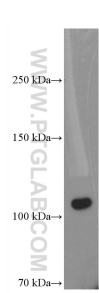
Storage:
Store at -80°C.

Storage Buffer:
PBS Only

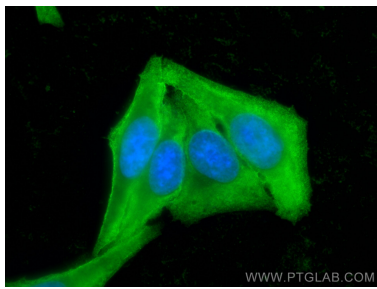
For technical support and original validation data for this product please contact:
T: 1 (888) 4PTGLAB (1-888-478-4522) (toll free in USA), or 1(312) 455-8498 (outside USA)
E: proteintech@ptglab.com
W: ptglab.com

This product is exclusively available under Proteintech Group brand and is not available to purchase from any other manufacturer.

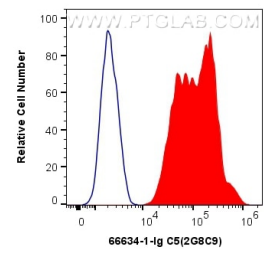
Selected Validation Data



human plasma were subjected to SDS PAGE followed by western blot with 66634-1-Ig (C5 antibody) at dilution of 1:10000 incubated at room temperature for 1.5 hours. This data was developed using the same antibody clone with 66634-1-PBS in a different storage buffer formulation.



Immunofluorescent analysis of (-20°C Ethanol) fixed HepG2 cells using C5 antibody (66634-1-Ig, Clone: 2G8C9) at dilution of 1:800 and CoraLite®488-Conjugated Goat Anti-Mouse IgG(H+L) (SA00013-1). This data was developed using the same antibody clone with 66634-1-PBS in a different storage buffer formulation.



1X10⁶ HepG2 cells were intracellularly stained with 0.4 ug Anti-Human C5 (66634-1-Ig, Clone:2G8C9) and CoraLite®488-Conjugated AffiniPure Goat Anti-Mouse IgG(H+L) at dilution 1:1000 (red), or 0.4 ug Mouse IgG2a Isotype Control (C1.18.4) (65208-1-Ig, Clone: C1.18.4) (blue). Cells were fixed with 4% PFA and permeabilized with Flow Cytometry Perm Buffer (PF00011-C). This data was developed using the same antibody clone with 66634-1-PBS in a