

For Research Use Only

FIS1 Monoclonal antibody

Catalog Number: 66635-1-Ig **24 Publications**



Basic Information

Catalog Number: 66635-1-Ig	GenBank Accession Number: BC009428	Purification Method: Protein G purification
Size: 150ul, Concentration: 1200 ug/ml by Nanodrop and 1000 ug/ml by Bradford method using BSA as the standard;	GeneID (NCBI): 51024	CloneNo.: 2F10E1
Source: Mouse	UNIPROT ID: Q9Y3D6	Recommended Dilutions: WB 1:5000-1:50000 IP 0.5-4.0 ug for 1.0-3.0 mg of total protein lysate IHC 1:250-1:1000 IF/ICC 1:200-1:800
Isotype: IgG1	Full Name: fission 1 (mitochondrial outer membrane) homolog (S. cerevisiae)	
Immunogen Catalog Number: AG1409	Calculated MW: 17 kDa	
	Observed MW: 15 kDa	

Applications

Tested Applications: WB, IHC, IF/ICC, IP, ELISA	Positive Controls: WB : LNCaP cells, HEK-293 cells, HeLa cells, MCF-7 cells, Jurkat cells, HepG2 cells, K-562 cells IP : HeLa cells, IHC : human breast cancer tissue, human prostate cancer tissue, human ovary tumor tissue IF/ICC : HepG2 cells,
Cited Applications: WB, IHC, IF	
Species Specificity: human	
Cited Species: human, mouse, rat, pig, goat, fish	
Note-IHC: suggested antigen retrieval with TE buffer pH 9.0; (*) Alternatively, antigen retrieval may be performed with citrate buffer pH 6.0	

Background Information

Fis1 (fission 1) is an integral mitochondrial outer membrane protein that participates in mitochondrial fission by interacting with dynamin-related protein 1 (Drp1). Excessive mitochondrial fission is associated with the pathology of a number of neurodegenerative or neurodevelopmental diseases. Increased expression of Fis1 has been found in Huntington's disease (HD)-affected brain, Alzheimer's disease (AD) patients, and autism spectrum disorder. (21257639, 21459773, 23333625)

Notable Publications

Author	Pubmed ID	Journal	Application
YUE LI	34470980	Biol Pharm Bull	IF
Xiao-Lin Jiang	36309912	Aging (Albany NY)	WB
Yujie Zhong	36501024	Nutrients	WB

Storage

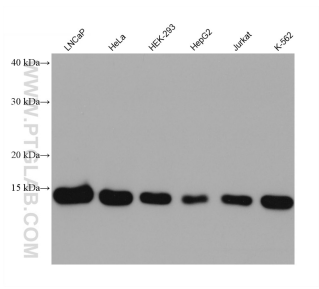
Storage:
Store at -20°C. Stable for one year after shipment.
Storage Buffer:
PBS with 0.02% sodium azide and 50% glycerol, pH7.3
Aliquoting is unnecessary for -20°C storage

*** 20ul sizes contain 0.1% BSA

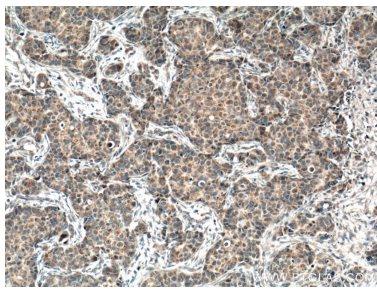
For technical support and original validation data for this product please contact:
T: 1 (888) 4PTGLAB (1-888-478-4522) (toll free in USA), or 1(312) 455-8498 (outside USA)
E: proteintech@ptglab.com
W: ptglab.com

This product is exclusively available under Proteintech Group brand and is not available to purchase from any other manufacturer.

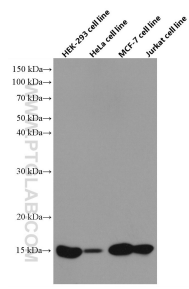
Selected Validation Data



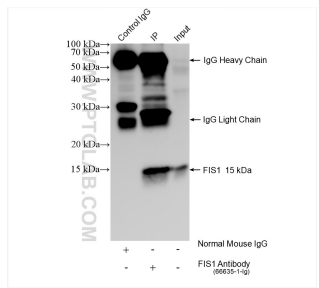
Various lysates were subjected to SDS PAGE followed by western blot with 66635-1-Ig (FIS1 antibody) at dilution of 1:10000 incubated at room temperature for 1.5 hours.



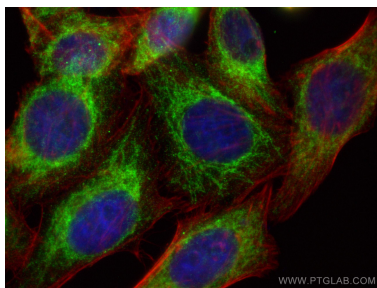
Immunohistochemical analysis of paraffin-embedded human breast cancer tissue slide using 66635-1-Ig (FIS1 antibody) at dilution of 1:500 (under 10x lens. Heat mediated antigen retrieval with Tris-EDTA buffer (pH 9.0).



Various cells were subjected to SDS PAGE followed by western blot with 66635-1-Ig (FIS1 antibody) at dilution of 1:5000 incubated at room temperature for 1.5 hours.



IP result of anti-FIS1 (IP:66635-1-Ig, 4ug; Detection:66635-1-Ig 1:1000) with HeLa cells lysate 1120 ug.



Immunofluorescent analysis of (4% PFA) fixed HepG2 cells using FIS1 antibody (66635-1-Ig, Clone: 2F10E1) at dilution of 1:400 and Multi-rAb Coralite ® Plus 488-Goat Anti-Mouse Recombinant Secondary Antibody (H+L) (RGAM002), CL594-Phalloidin (red).