

For Research Use Only

ANGPTL8/Betatrophin Monoclonal antibody

Catalog Number: 66641-1-Ig **1 Publications**



Basic Information

Catalog Number: 66641-1-Ig	GenBank Accession Number: BC146552	Purification Method: Protein A purification
Size: 150ul , Concentration: 1800 ug/ml by Nanodrop and 1000 ug/ml by Bradford method using BSA as the standard;	GeneID (NCBI): 55908	CloneNo.: 2H9F9
Source: Mouse	UNIPROT ID: Q6UXHO	Recommended Dilutions: WB 1:1000-1:8000 IHC 1:200-1:800 IF-P 1:200-1:800
Isotype: IgG1	Full Name: hepatocellular carcinoma-associated gene TD26	
Immunogen Catalog Number: AG20708	Calculated MW: 251 aa, 28 kDa	
	Observed MW: 22 kDa	

Applications

Tested Applications: WB, IHC, IF-P, ELISA	Positive Controls:
Cited Applications: WB	WB : human adipose tissue,
Species Specificity: Human	IHC : human liver tissue, human liver cancer tissue
Cited Species: human	IF-P : human liver tissue,
Note-IHC: suggested antigen retrieval with TE buffer pH 9.0; (*) Alternatively, antigen retrieval may be performed with citrate buffer pH 6.0	

Notable Publications

Author	Pubmed ID	Journal	Application
Shuoshuo Li	33555034	Br J Pharmacol	WB

Storage

Storage:
Store at -20°C. Stable for one year after shipment.
Storage Buffer:
PBS with 0.02% sodium azide and 50% glycerol pH 7.3.
Aliquoting is unnecessary for -20°C storage

*** 20ul sizes contain 0.1% BSA

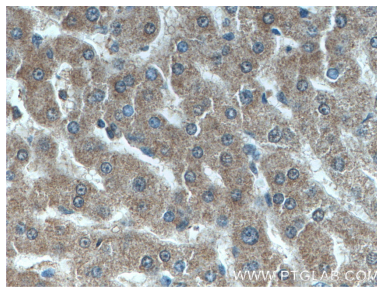
For technical support and original validation data for this product please contact:
T: 1 (888) 4PTGLAB (1-888-478-4522) (toll free in USA), or 1(312) 455-8498 (outside USA)
E: proteintech@ptglab.com
W: ptglab.com

This product is exclusively available under Proteintech Group brand and is not available to purchase from any other manufacturer.

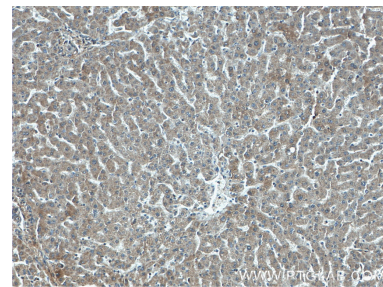
Selected Validation Data



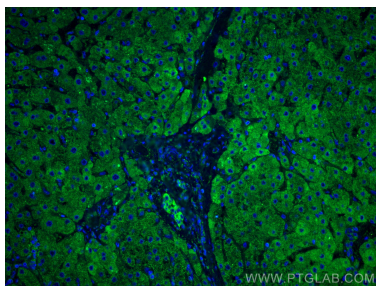
human adipose tissue were subjected to SDS PAGE followed by western blot with 66641-1-Ig (ANGPTL8/Betatrophin antibody) at dilution of 1:4000 incubated at room temperature for 1.5 hours.



Immunohistochemical analysis of paraffin-embedded human liver tissue slide using 66641-1-Ig (ANGPTL8/Betatrophin antibody) at dilution of 1:400 (under 40x lens).



Immunohistochemical analysis of paraffin-embedded human liver tissue slide using 66641-1-Ig (ANGPTL8/Betatrophin antibody) at dilution of 1:400 (under 10x lens).



Immunofluorescent analysis of (4% PFA) fixed human liver tissue using ANGPTL8/Betatrophin antibody (66641-1-Ig, Clone: 2H9F9) at dilution of 1:400 and CoraLite®488-Conjugated Goat Anti-Mouse IgG(H+L).