

For Research Use Only



ANGPTL8/Betatrophin Monoclonal antibody, PBS Only

Catalog Number: 66641-1-PBS

Basic Information

Catalog Number:

66641-1-PBS

Size:

100ug , Concentration: 1 mg/ml by Nanodrop;

Source:

Mouse

Isotype:

IgG1

Immunogen Catalog Number:

AG20708

GenBank Accession Number:

BC146552

GeneID (NCBI):

55908

UNIPROT ID:

Q6UXH0

Full Name:

hepatocellular carcinoma-associated gene TD26

Calculated MW:

251 aa, 28 kDa

Observed MW:

22 kDa

Purification Method:

Protein A purification

CloneNo.:

2H9F9

Applications

Tested Applications:

WB, IF, IHC, Indirect ELISA

Species Specificity:

Human

Storage

Storage:

Store at -80°C.

Storage Buffer:

PBS Only

For technical support and original validation data for this product please contact:

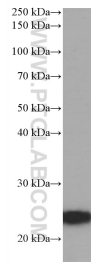
T: 1 (888) 4PTGLAB (1-888-478-4522) (toll free in USA), or 1(312) 455-8498 (outside USA)

E: proteintech@ptglab.com

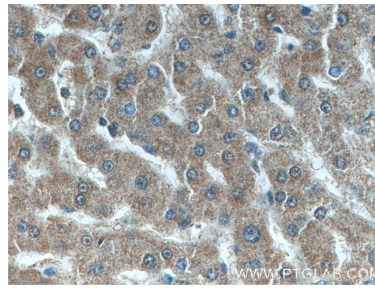
W: ptglab.com

This product is exclusively available under Proteintech Group brand and is not available to purchase from any other manufacturer.

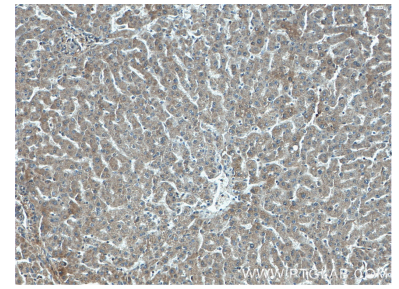
Selected Validation Data



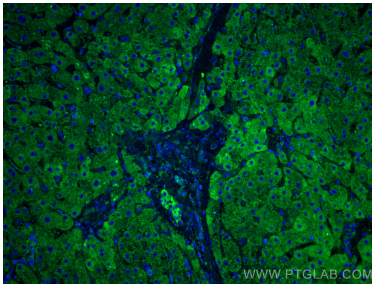
human adipose tissue were subjected to SDS PAGE followed by western blot with 66641-1-Ig (ANGPTL8/Betatrophin antibody) at dilution of 1:4000 incubated at room temperature for 1.5 hours. This data was developed using the same antibody clone with 66641-1-PBS in a different storage buffer formulation.



Immunohistochemical analysis of paraffin-embedded human liver tissue slide using 66641-1-Ig (ANGPTL8/Betatrophin antibody) at dilution of 1:400 (under 40x lens). This data was developed using the same antibody clone with 66641-1-PBS in a different storage buffer formulation.



Immunohistochemical analysis of paraffin-embedded human liver tissue slide using 66641-1-Ig (ANGPTL8/Betatrophin antibody) at dilution of 1:400 (under 10x lens). This data was developed using the same antibody clone with 66641-1-PBS in a different storage buffer formulation.



Immunofluorescent analysis of (4% PFA) fixed human liver tissue using ANGPTL8/Betatrophin antibody (66641-1-Ig, Clone: 2H9F9) at dilution of 1:400 and CoraLite®488-Conjugated AffiniPure Goat Anti-Mouse IgG(H+L). This data was developed using the same antibody clone with 66641-1-PBS in a different storage buffer formulation.