

For Research Use Only

ANLN Monoclonal antibody

Catalog Number: 66643-1-Ig

Featured Product

5 Publications



Basic Information

Catalog Number:

66643-1-Ig

Size:

150ul, Concentration: 1800 ug/ml by Nanodrop and 1000 ug/ml by Bradford method using BSA as the standard;

Source:

Mouse

Isotype:

IgG1

Immunogen Catalog Number:

AG19294

GenBank Accession Number:

BC034692

GeneID (NCBI):

54443

UNIPROT ID:

Q9NQW6

Full Name:

anillin, actin binding protein

Calculated MW:

1124 aa, 124 kDa

Observed MW:

110 kDa~120 kDa

Purification Method:

Protein G purification

CloneNo.:

1B4A8

Recommended Dilutions:

WB 1:2000-1:10000

IF/ICC 1:500-1:2000

Applications

Tested Applications:

WB, IF/ICC, ELISA

Cited Applications:

WB

Species Specificity:

human, mouse, rat

Cited Species:

human

Positive Controls:

WB : HeLa cells, MCF-7 cells, rat brain tissue, mouse brain tissue, HEK-293 cells, U-251 cells, PC-12 cells

IF/ICC : A431 cells,

Background Information

Anillin, an actin-binding protein, is a conserved cleavage furrow component important for cytokinesis. The human anillin protein localizes to the nucleus during interphase, the cortex following nuclear envelope breakdown, and the cleavage furrow during cytokinesis. It interacts with at least two other furrow proteins, actin and the septins through its C-terminal PH domain and N-terminal actin-binding domain. In anillin knockdown cells, the cleavage furrow ingressed but failed to complete the ingression. Anillin has been found to be overexpressed in tumors and may serve as promising marker for pancreatic carcinoma molecular diagnostics as well as a prognostic indicator for non-small cell lung cancers.

Notable Publications

Author	Pubmed ID	Journal	Application
Xiaofeng Dai	31636652	Front Genet	WB
Min Zhang	32198770	Clin Exp Pharmacol Physiol	WB
Ling Li	32275843	Cell Cycle	WB

Storage

Storage:

Store at -20°C. Stable for one year after shipment.

Storage Buffer:

PBS with 0.02% sodium azide and 50% glycerol pH 7.3.

Aliquoting is unnecessary for -20°C storage

*** 20ul sizes contain 0.1% BSA

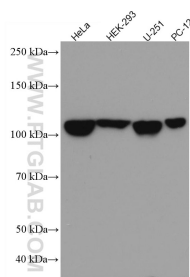
For technical support and original validation data for this product please contact:

T: 1 (888) 4PTGLAB (1-888-478-4522) (toll free in USA), or 1(312) 455-8498 (outside USA)

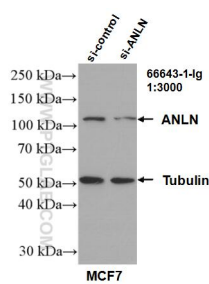
E: proteintech@ptglab.com
W: ptglab.com

This product is exclusively available under Proteintech Group brand and is not available to purchase from any other manufacturer.

Selected Validation Data



Various lysates were subjected to SDS PAGE followed by western blot with 66643-1-Ig (ANLN antibody) at dilution of 1:5000 incubated at room temperature for 1.5 hours.



WB result of ANLN antibody (66643-1-Ig; 1:3000; incubated at room temperature for 1.5 hours) with sh-Control and sh-ANLN transfected MCF-7 cells.

Immunofluorescent analysis of (4% PFA) fixed A431 cells using ANLN antibody (66643-1-Ig, Clone: 1B4A8) at dilution of 1:1000 and CoraLite®488-Conjugated AffiniPure Goat Anti-Mouse IgG(H+L) (SA00013-1), CL594-phalloidin (red).