

For Research Use Only

IGFBP2 Monoclonal antibody

Catalog Number: 66644-1-Ig



Basic Information

Catalog Number: 66644-1-Ig	GenBank Accession Number: BC004312	Purification Method: Protein G purification
Size: 150ul , Concentration: 1400 ug/ml by Nanodrop and 1000 ug/ml by Bradford method using BSA as the standard;	GeneID (NCBI): 3485	CloneNo.: 2F10D1
Source: Mouse	UNIPROT ID: P18065	Recommended Dilutions: WB 1:2000-1:10000 IF/ICC 1:200-1:800
Isotype: IgG1	Full Name: IGF binding protein 2	
Immunogen Catalog Number: AG8421	Calculated MW: 36 kDa	
	Observed MW: 36 kDa	

Applications

Tested Applications: WB, IF/ICC, ELISA	Positive Controls:
Species Specificity: human, mouse, rat	WB : A549 cells, T-27D cells, MCF-7 cells, PC-3 cells, NCCIT cells, 4T1 cells IF/ICC : A549 cells,

Background Information

Insulin-like growth factors (IGFs) and their binding proteins (IGFBPs) have important metabolic roles in the human body. The levels of IGFBP2 are elevated during progression of many human cancers.

Storage

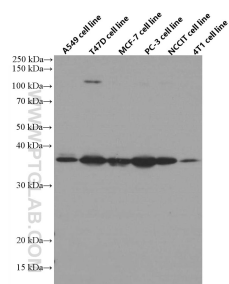
Storage:
Store at -20°C. Stable for one year after shipment.
Storage Buffer:
PBS with 0.02% sodium azide and 50% glycerol pH 7.3.
Aliquoting is unnecessary for -20°C storage

*** 20ul sizes contain 0.1% BSA

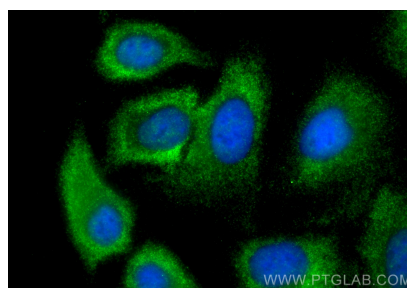
For technical support and original validation data for this product please contact:
T: 1 (888) 4PTGLAB (1-888-478-4522) (toll free in USA), or 1(312) 455-8498 (outside USA)
E: proteintech@ptglab.com
W: ptglab.com

This product is exclusively available under Proteintech Group brand and is not available to purchase from any other manufacturer.

Selected Validation Data



Various lysates were subjected to SDS PAGE followed by western blot with 66644-1-Ig (IGFBP2 antibody) at dilution of 1:5000 incubated at room temperature for 1.5 hours.



Immunofluorescent analysis of (-20°C Methanol) fixed A549 cells using IGFBP2 antibody (66644-1-Ig, Clone: 2F10D1) at dilution of 1:400 and Multi-rAb CoraLite® Plus 488-Goat Anti-Mouse Recombinant Secondary Antibody (H+L) (RGAM002).