

For Research Use Only

# IGFBP2 Monoclonal antibody, PBS Only

Catalog Number: 66644-1-PBS



## Basic Information

<b>Catalog Number:</b> 66644-1-PBS	<b>GenBank Accession Number:</b> BC004312	<b>Purification Method:</b> Protein G purification
<b>Size:</b> 100ug , Concentration: 1mg/ml by Nanodrop;	<b>GeneID (NCBI):</b> 3485	<b>CloneNo.:</b> 2F10D1
<b>Source:</b> Mouse	<b>UNIPROT ID:</b> P18065	
<b>Isotype:</b> IgG1	<b>Full Name:</b> IGF binding protein 2	
<b>Immunogen Catalog Number:</b> AG8421	<b>Calculated MW:</b> 36 kDa	
	<b>Observed MW:</b> 36 kDa	

## Applications

**Tested Applications:**  
WB, IF/ICC, Indirect ELISA

**Species Specificity:**  
human, mouse, rat

## Background Information

Insulin-like growth factors (IGFs) and their binding proteins (IGFBPs) have important metabolic roles in the human body. The levels of IGFBP2 are elevated during progression of many human cancers.

## Storage

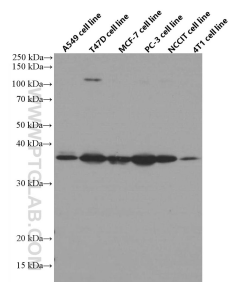
**Storage:**  
Store at -80°C.

**Storage Buffer:**  
PBS Only

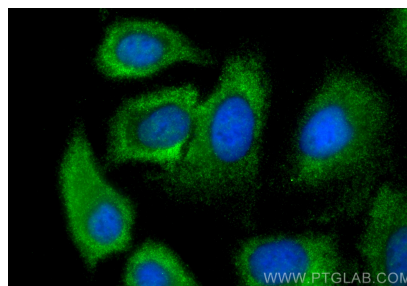
For technical support and original validation data for this product please contact:  
T: 1 (888) 4PTGLAB (1-888-478-4522) (toll free in USA), or 1(312) 455-8498 (outside USA)  
E: [proteintech@ptglab.com](mailto:proteintech@ptglab.com)  
W: [ptglab.com](http://ptglab.com)

This product is exclusively available under Proteintech Group brand and is not available to purchase from any other manufacturer.

## Selected Validation Data



Various lysates were subjected to SDS PAGE followed by western blot with 66644-1-Ig (IGFBP2 antibody) at dilution of 1:5000 incubated at room temperature for 1.5 hours. This data was developed using the same antibody clone with 66644-1-PBS in a different storage buffer formulation.



Immunofluorescent analysis of (-20°C Methanol) fixed A549 cells using IGFBP2 antibody (66644-1-Ig, Clone: 2F10D1 ) at dilution of 1:400 and Multi-rAb CoraLite ® Plus 488-Goat Anti-Mouse Recombinant Secondary Antibody (H+L) (RGAM002). This data was developed using the same antibody clone with 66644-1-PBS in a different storage buffer formulation.