

For Research Use Only

# TLR2 Monoclonal antibody

Catalog Number: 66645-1-Ig

Featured Product

24 Publications



## Basic Information

Catalog Number:

66645-1-Ig

Size:

150ul, Concentration: 1700 ug/ml by Nanodrop and 1000 ug/ml by Bradford method using BSA as the standard;

Source:

Mouse

Isotype:

IgG2a

Immunogen Catalog Number:

AG25626

GenBank Accession Number:

BC033756

GeneID (NCBI):

7097

UNIPROT ID:

O60603

Full Name:

toll-like receptor 2

Calculated MW:

784 aa, 90 kDa

Observed MW:

90-100 kDa

Purification Method:

Protein A purification

CloneNo.:

1C1D3

Recommended Dilutions:

WB 1:500-1:2000

IHC 1:200-1:800

IF/ICC 1:200-1:800

## Applications

Tested Applications:

WB, IHC, IF/ICC, ELISA

Cited Applications:

WB, IHC, IF

Species Specificity:

human

Cited Species:

human, mouse

**Note-IHC: suggested antigen retrieval with TE buffer pH 9.0; (\*) Alternatively, antigen retrieval may be performed with citrate buffer pH 6.0**

Positive Controls:

WB: THP-1 cells, U-937 cells

IHC: human liver tissue,

IF/ICC: THP-1 cells,

## Background Information

TLR2, also known as CD282, is a Toll-like receptor (TLR) family member. TLR receptors are type I integral transmembrane glycoproteins that play a fundamental role in pathogen recognition and activation of innate immunity. TLR2 is expressed by immune cells including monocytes/macrophages, polymorphonuclear leukocytes (PMLs), and dendritic cells, and is also expressed by some non-immune cells including endothelial and epithelial cells (PMID: 21428911; 22566960). TLR2 forms heterodimers with TLR1 and TLR6, which is the initial step in a cascade of events leading to significant innate immune responses, development of adaptive immunity to pathogens, and protection from immune sequelae related to infection with these pathogens (PMID: 22566960).

## Notable Publications

Author	Pubmed ID	Journal	Application
Xiaotong Xu	36188596	Front Pharmacol	WB
Zhenglin Chang	36389789	Front Immunol	IHC
Yutao Ye	35432274	Front Microbiol	WB

## Storage

Storage:

Store at -20°C. Stable for one year after shipment.

Storage Buffer:

PBS with 0.02% sodium azide and 50% glycerol, pH7.3

Aliquoting is unnecessary for -20°C storage

\*\*\* 20ul sizes contain 0.1% BSA

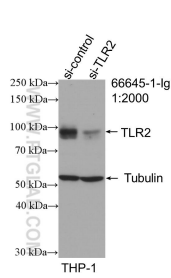
For technical support and original validation data for this product please contact:

T: 1 (888) 4PTGLAB (1-888-478-4522) (toll free in USA), or 1(312) 455-8498 (outside USA)

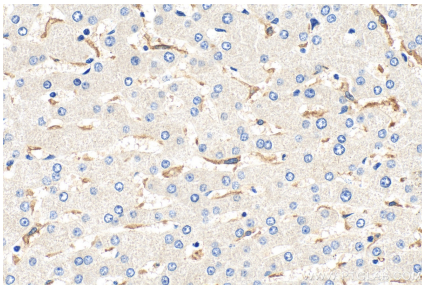
E: [proteintech@ptglab.com](mailto:proteintech@ptglab.com)  
W: [ptglab.com](http://ptglab.com)

This product is exclusively available under Proteintech Group brand and is not available to purchase from any other manufacturer.

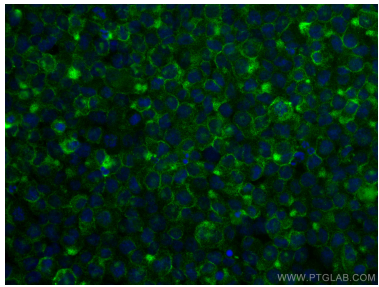
Selected Validation Data



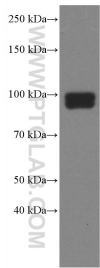
WB result of TLR2 antibody (66645-1-Ig; 1:2000; incubated at room temperature for 1.5 hours) with sh-Control and sh-TLR2 transfected THP-1 cells.



Immunohistochemical analysis of paraffin-embedded human liver tissue slide using 66645-1-Ig (TLR2 antibody) at dilution of 1:400 (under 40x lens). Heat mediated antigen retrieval with Tris-EDTA buffer (pH 9.0).



Immunofluorescent analysis of (4% PFA) fixed THP-1 cells using TLR2 antibody (66645-1-Ig, Clone: 1C1D3 ) at dilution of 1:400 and CoraLite®488-Conjugated AffiniPure Goat Anti-Mouse IgG(H+L).



THP-1 cells were subjected to SDS PAGE followed by western blot with 66645-1-Ig (TLR2 antibody) at dilution of 1:2000 incubated at room temperature for 1.5 hours.