

For Research Use Only

TLR2 Monoclonal antibody, PBS Only (Capture)

Catalog Number: 66645-1-PBS

Featured Product



Basic Information

Catalog Number:

66645-1-PBS

Size:

100ug, Concentration: 1mg/ml by Nanodrop;

Source:

Mouse

Isotype:

IgG2a

Immunogen Catalog Number:

AG25626

GenBank Accession Number:

BC033756

GeneID (NCBI):

7097

UNIPROT ID:

O60603

Full Name:

toll-like receptor 2

Calculated MW:

784 aa, 90 kDa

Observed MW:

90-100 kDa

Purification Method:

Protein A purification

CloneNo.:

1C1D3

Applications

Tested Applications:

WB, IHC, IF/ICC, Cytometric bead array, Indirect ELISA

Species Specificity:

human

Product Information

66645-1-PBS targets TLR2 as part of a matched antibody pair:

MP50388-1: 66645-1-PBS capture and 66645-2-PBS detection (validated in Cytometric bead array)

MP50388-3: 66645-1-PBS capture and 66645-4-PBS detection (validated in Cytometric bead array)

Unconjugated mouse monoclonal antibody pair in PBS only (BSA and azide free) storage buffer at a concentration of 1 mg/mL, ready for conjugation.

This conjugation ready format makes antibodies ideal for use in many applications including: ELISAs, multiplex assays requiring matched pairs, mass cytometry, and multiplex imaging applications. Antibody use should be optimized by the end user for each application and assay.

Background Information

TLR2, also known as CD282, is a Toll-like receptor (TLR) family member. TLR receptors are type I integral transmembrane glycoproteins that play a fundamental role in pathogen recognition and activation of innate immunity. TLR2 is expressed by immune cells including monocytes/macrophages, polymorphonuclear leukocytes (PMLs), and dendritic cells, and is also expressed by some non-immune cells including endothelial and epithelial cells (PMID: 21428911; 22566960). TLR2 forms heterodimers with TLR1 and TLR6, which is the initial step in a cascade of events leading to significant innate immune responses, development of adaptive immunity to pathogens, and protection from immune sequelae related to infection with these pathogens (PMID: 22566960).

Storage

Storage:

Store at -80°C.

Storage Buffer:

PBS Only

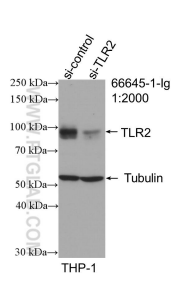
For technical support and original validation data for this product please contact:

T: 1 (888) 4PTGLAB (1-888-478-4522) (toll free in USA), or 1(312) 455-8498 (outside USA)

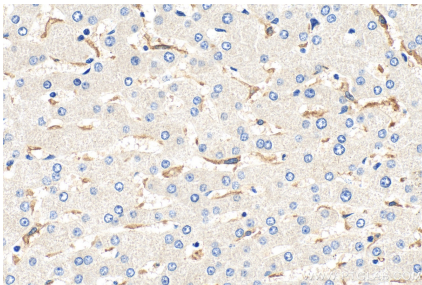
E: proteintech@ptglab.com
W: ptglab.com

This product is exclusively available under Proteintech Group brand and is not available to purchase from any other manufacturer.

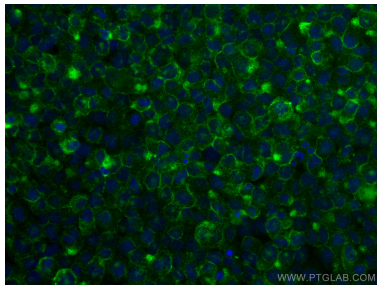
Selected Validation Data



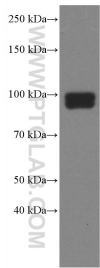
WB result of TLR2 antibody (66645-1-Ig; 1:2000; incubated at room temperature for 1.5 hours) with sh-Control and sh-TLR2 transfected THP-1 cells. This data was developed using the same antibody clone with 66645-1-PBS in a different storage buffer formulation.



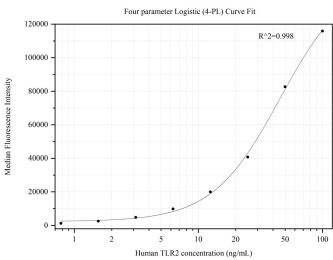
Immunohistochemical analysis of paraffin-embedded human liver tissue slide using 66645-1-Ig (TLR2 antibody) at dilution of 1:400 (under 40x lens). Heat mediated antigen retrieval with Tris-EDTA buffer (pH 9.0). This data was developed using the same antibody clone with 66645-1-PBS in a different storage buffer formulation.



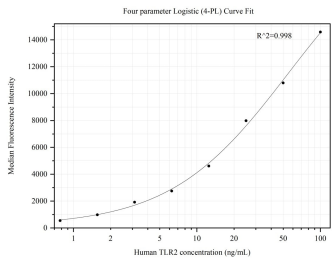
Immunofluorescent analysis of (4% PFA) fixed THP-1 cells using TLR2 antibody (66645-1-Ig, Clone: 1C1D3) at dilution of 1:400 and CoraLite®488-Conjugated AffiniPure Goat Anti-Mouse IgG(H+L). This data was developed using the same antibody clone with 66645-1-PBS in a different storage buffer formulation.



THP-1 cells were subjected to SDS PAGE followed by western blot with 66645-1-Ig (TLR2 antibody) at dilution of 1:2000 incubated at room temperature for 1.5 hours. This data was developed using the same antibody clone with 66645-1-PBS in a different storage buffer formulation.



Cytometric bead array standard curve of MP50388-1, TLR2 Monoclonal Matched Antibody Pair, PBS Only. Capture antibody: 66645-1-PBS. Detection antibody: 66645-2-PBS. Standard:Ag25626. Range: 0.781-100 ng/mL



Cytometric bead array standard curve of MP50388-3, TLR2 Monoclonal Matched Antibody Pair, PBS Only. Capture antibody: 66645-1-PBS. Detection antibody: 66645-4-PBS. Standard:Ag25626. Range: 0.781-100 ng/mL