

For Research Use Only

# GRASP65, GORASP1 Monoclonal antibody

Catalog Number: 66651-1-Ig **4 Publications**



## Basic Information

<b>Catalog Number:</b> 66651-1-Ig	<b>GenBank Accession Number:</b> BC008928	<b>Purification Method:</b> Protein A purification
<b>Size:</b> 150ul , Concentration: 1200 ug/ml by Nanodrop and 800 ug/ml by Bradford method using BSA as the standard;	<b>GeneID (NCBI):</b> 64689	<b>CloneNo.:</b> 1B2C10
<b>Source:</b> Mouse	<b>UNIPROT ID:</b> Q9BQQ3	<b>Recommended Dilutions:</b> WB 1:1000-1:8000 IHC 1:200-1:800 IF/ICC 1:1938-1:7752
<b>Isotype:</b> IgG1	<b>Full Name:</b> golgi reassembly stacking protein 1, 65kDa	
<b>Immunogen Catalog Number:</b> AG1054	<b>Calculated MW:</b> 46 kDa	
	<b>Observed MW:</b> 65-70 kDa	

## Applications

<b>Tested Applications:</b> WB, IHC, IF/ICC, ELISA	<b>Positive Controls:</b>
<b>Cited Applications:</b> WB	<b>WB :</b> HeLa cells, HSC-T6 cells, HEK-293 cells, MCF-7 cells, Jurkat cells
<b>Species Specificity:</b> human, mouse, rat	<b>IHC :</b> human prostate cancer tissue, human stomach cancer tissue
<b>Cited Species:</b> human	<b>IF/ICC :</b> SK-BR-3 cells,
<b>Note-IHC: suggested antigen retrieval with TE buffer pH 9.0; (*) Alternatively, antigen retrieval may be performed with citrate buffer pH 6.0</b>	

## Background Information

Golgi reassembly-stacking protein 1 is a protein that in humans is encoded by the GORASP1 gene. The Golgi complex plays a key role in the sorting and modification of proteins exported from the endoplasmic reticulum.

## Notable Publications

Author	Pubmed ID	Journal	Application
Stephen C Ireland	32583744	Mol Biol Cell	WB
Shuai Li	34239872	Front Cell Dev Biol	WB
Guang Ji	31264250	J Cell Biochem	WB

## Storage

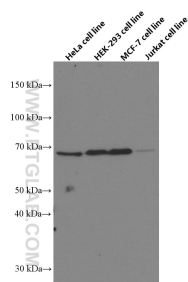
**Storage:**  
Store at -20°C. Stable for one year after shipment.  
**Storage Buffer:**  
PBS with 0.02% sodium azide and 50% glycerol pH 7.3.  
Aliquoting is unnecessary for -20°C storage

\*\*\* 20ul sizes contain 0.1% BSA

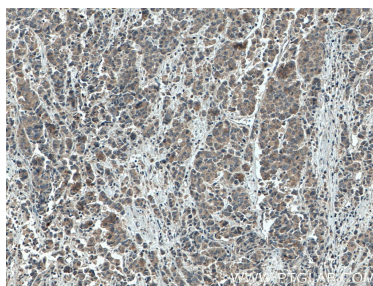
For technical support and original validation data for this product please contact:  
T: 1 (888) 4PTGLAB (1-888-478-4522) (toll free in USA), or 1(312) 455-8498 (outside USA)  
E: proteintech@ptglab.com  
W: ptglab.com

This product is exclusively available under Proteintech Group brand and is not available to purchase from any other manufacturer.

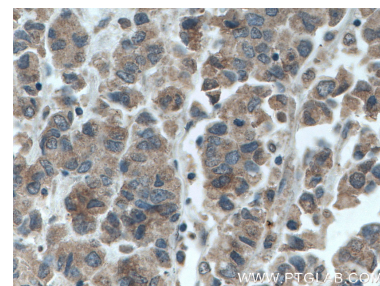
## Selected Validation Data



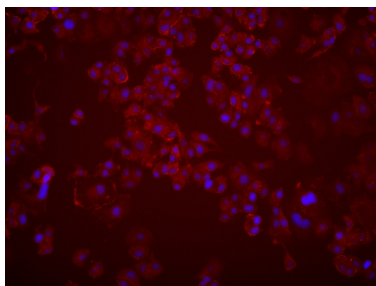
Various lysates were subjected to SDS PAGE followed by western blot with 66651-1-Ig (GRASP65, GORASP1 antibody) at dilution of 1:4000 incubated at room temperature for 1.5 hours.



Immunohistochemical analysis of paraffin-embedded human prostate cancer tissue slide using 66651-1-Ig (GRASP65, GORASP1 antibody) at dilution of 1:400 (under 10x lens. Heat mediated antigen retrieval with Tris-EDTA buffer (pH 9.0).



Immunohistochemical analysis of paraffin-embedded human prostate cancer tissue slide using 66651-1-Ig (GRASP65, GORASP1 antibody) at dilution of 1:400 (under 40x lens. Heat mediated antigen retrieval with Tris-EDTA buffer (pH 9.0).



Immunofluorescent analysis of (4% PFA) fixed SK-BR-3 cells using GRASP65, GORASP1 antibody (66651-1-Ig, Clone: 1B2C10) at dilution of 1:3876 and Multi-rAb CoraLite® Plus 594-Goat Anti-Mouse Recombinant Secondary Antibody (H+L) (Cat.NO. RGAM004).