

For Research Use Only

GRASP65, GORASP1 Monoclonal antibody



Catalog Number: 66651-1-Ig **3 Publications**

Basic Information

Catalog Number: 66651-1-Ig	GenBank Accession Number: BC008928	Purification Method: Protein A purification
Size: 150ul, Concentration: 1200 µg/ml by Nanodrop and 800 µg/ml by Bradford method using BSA as the standard;	GeneID (NCBI): 64689	CloneNo.: 1B2C10
Source: Mouse	Full Name: golgi reassembly stacking protein 1, 65kDa	Recommended Dilutions: WB 1:1000-1:8000 IHC 1:200-1:800
Isotype: IgG1	Calculated MW: 46 kDa	
Immunogen Catalog Number: AG1054	Observed MW: 65-70 kDa	

Applications

Tested Applications:

IHC, WB, ELISA

Cited Applications:

WB

Species Specificity:

Human, Mouse, Rat

Cited Species:

human

Note-IHC: suggested antigen retrieval with TE buffer pH 9.0; (*) Alternatively, antigen retrieval may be performed with citrate buffer pH 6.0

Positive Controls:

WB: HeLa cells, HSC-T6 cells, HEK-293 cells, MCF-7 cells, Jurkat cells

IHC: human prostate cancer tissue, human stomach cancer tissue

Background Information

Golgi reassembly-stacking protein 1 is a protein that in humans is encoded by the GORASP1 gene. The Golgi complex plays a key role in the sorting and modification of proteins exported from the endoplasmic reticulum.

Notable Publications

Author	Pubmed ID	Journal	Application
Stephen C Ireland	32583744	Mol Biol Cell	WB
Shuai Li	34239872	Front Cell Dev Biol	WB
Guang Ji	31264250	J Cell Biochem	WB

Storage

Storage:

Store at -20°C. Stable for one year after shipment.

Storage Buffer:

PBS with 0.02% sodium azide and 50% glycerol pH 7.3.

Aliquoting is unnecessary for -20°C storage

*** 20ul sizes contain 0.1% BSA

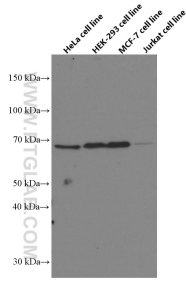
For technical support and original validation data for this product please contact:

T: 1 (888) 4PTGLAB (1-888-478-4522) (toll free in USA), or 1(312) 455-8498 (outside USA)

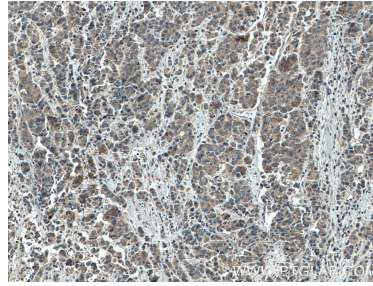
E: proteintech@ptglab.com
W: ptglab.com

This product is exclusively available under Proteintech Group brand and is not available to purchase from any other manufacturer.

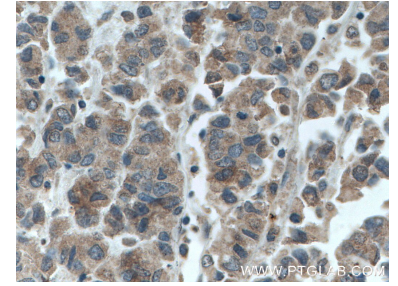
Selected Validation Data



Various lysates were subjected to SDS PAGE followed by western blot with 66651-1-Ig (GRASP65, GORASP1 antibody) at dilution of 1:4000 incubated at room temperature for 1.5 hours.



Immunohistochemical analysis of paraffin-embedded human prostate cancer tissue slide using 66651-1-Ig (GRASP65, GORASP1 antibody) at dilution of 1:400 (under 10x lens). Heat mediated antigen retrieval with Tris-EDTA buffer (pH 9.0).



Immunohistochemical analysis of paraffin-embedded human prostate cancer tissue slide using 66651-1-Ig (GRASP65, GORASP1 antibody) at dilution of 1:400 (under 40x lens). Heat mediated antigen retrieval with Tris-EDTA buffer (pH 9.0).