

For Research Use Only

XRCC2 Monoclonal antibody

Catalog Number: 66652-1-Ig



Basic Information

Catalog Number: 66652-1-Ig	GenBank Accession Number: BC042137	Purification Method: Protein A purification
Size: 150ul , Concentration: 2000 ug/ml by Nanodrop and 1000 ug/ml by Bradford method using BSA as the standard;	GeneID (NCBI): 7516	CloneNo.: 3D9A1
Source: Mouse	UNIPROT ID: O43543	Recommended Dilutions: WB 1:1000-1:4000 IF/ICC 1:50-1:500
Isotype: IgG2b	Full Name: X-ray repair complementing defective repair in Chinese hamster cells 2	
Immunogen Catalog Number: AG14421	Calculated MW: 280 aa, 32 kDa	
	Observed MW: 32 kDa	

Applications

Tested Applications: WB, IF/ICC, FC (Intra), ELISA	Positive Controls:
Species Specificity: human, mouse	WB : HEK-293 cells, Raji cells, NIH/3T3 cells IF/ICC : HepG2 cells,

Background Information

XRCC2, also named as DNA repair protein XRCC2, is a 280 amino acid protein, which belongs to the RecA family. XRCC2 is involved in the homologous recombination repair (HRR) pathway of double-stranded DNA, thought to repair chromosomal fragmentation, translocations and deletions. XRCC2 is a part of the Rad21 paralog protein complex BCDX2 which acts in the BRCA1-BRCA2-dependent HR pathway.

Storage

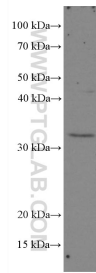
Storage:
Store at -20°C. Stable for one year after shipment.
Storage Buffer:
PBS with 0.02% sodium azide and 50% glycerol pH 7.3.
Aliquoting is unnecessary for -20°C storage

*** 20ul sizes contain 0.1% BSA

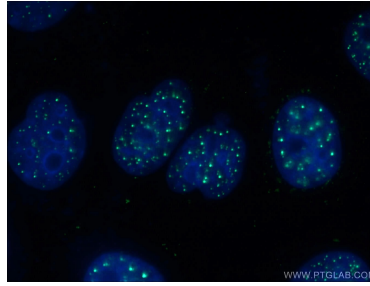
For technical support and original validation data for this product please contact:
T: 1 (888) 4PTGLAB (1-888-478-4522) (toll free in USA), or 1(312) 455-8498 (outside USA)
E: proteintech@ptglab.com
W: ptglab.com

This product is exclusively available under Proteintech Group brand and is not available to purchase from any other manufacturer.

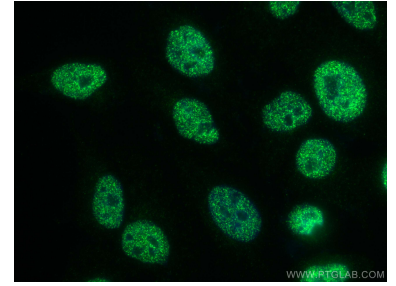
Selected Validation Data



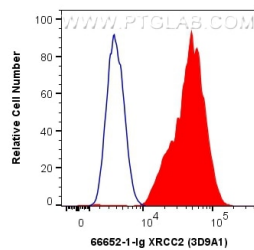
HEK-293 cells were subjected to SDS PAGE followed by western blot with 66652-1-Ig (XRC2 antibody) at dilution of 1:2000 incubated at room temperature for 1.5 hours.



Immunofluorescent analysis of (-20°C Ethanol) fixed HepG2 cells using 66652-1-Ig (XRC2 antibody) at dilution of 1:100 and Alexa Fluor 488-Conjugated Goat Anti-Mouse IgG(H+L).



Immunofluorescent analysis of (4% PFA) fixed HepG2 cells using XRC2 antibody (66652-1-Ig, Clone: 3D9A1) at dilution of 1:400 and CoraLite® 488-Conjugated Goat Anti-Mouse IgG(H+L).



1X10⁶ HepG2 cells were intracellularly stained with 0.4 ug Anti-Human XRC2 (66652-1-Ig, Clone:3D9A1) and CoraLite® 488-Conjugated Goat Anti-Mouse IgG(H+L) at dilution 1:1000 (red), or 0.4 ug Mouse IgG2b Isotype Control (MPC-11) (65128-1-Ig, Clone: MPC-11) (blue). Cells were fixed and permeabilized with Transcription Factor Staining Buffer Kit (PF00011).