

For Research Use Only

RAB43 Monoclonal antibody

Catalog Number: 66654-1-Ig **1 Publications**



Basic Information

Catalog Number: 66654-1-Ig	GenBank Accession Number: BC062319	Purification Method: Protein A purification
Size: 150ul , Concentration: 1400 ug/ml by Nanodrop and 1000 ug/ml by Bradford method using BSA as the standard;	GeneID (NCBI): 339122	CloneNo.: 3B2A8
Source: Mouse	UNIPROT ID: Q86YS6	Recommended Dilutions: WB 1:2000-1:10000
Isotype: IgG1	Full Name: RAB43, member RAS oncogene family	
Immunogen Catalog Number: AG26911	Calculated MW: 212 aa, 23 kDa	
	Observed MW: 23 kDa	

Applications

Tested Applications: WB, ELISA	Positive Controls: WB : MCF-7 cells, HEK-293 cells, human brain tissue, Jurkat cells, HepG2 cells, L02 cells, human placenta tissue
Cited Applications: WB	
Species Specificity: human	
Cited Species: human, mouse	

Background Information

Ras-related GTP-binding protein 43 (RAB43) is a member of the Ras superfamily. RAB43 is mainly located in endoplasmic reticulum and Golgi, and plays a role as a key regulator of vesicle movement, signal transduction and tethering membrane events in membrane trafficking.

Notable Publications

Author	Pubmed ID	Journal	Application
Juan Wang	37461827	J Cell Sci	WB

Storage

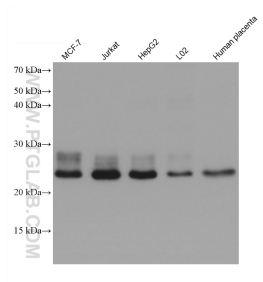
Storage:
Store at -20°C. Stable for one year after shipment.
Storage Buffer:
PBS with 0.02% sodium azide and 50% glycerol pH 7.3.
Aliquoting is unnecessary for -20°C storage

*** 20ul sizes contain 0.1% BSA

For technical support and original validation data for this product please contact:
T: 1 (888) 4PTGLAB (1-888-478-4522) (toll free in USA), or 1(312) 455-8498 (outside USA)
E: proteintech@ptglab.com
W: ptglab.com

This product is exclusively available under Proteintech Group brand and is not available to purchase from any other manufacturer.

Selected Validation Data



Various lysates were subjected to SDS PAGE followed by western blot with 66654-1-Ig (RAB43 antibody) at dilution of 1:5000 incubated at room temperature for 1.5 hours.