

For Research Use Only

# RAB43 Monoclonal antibody, PBS Only

Catalog Number: 66654-1-PBS



## Basic Information

<b>Catalog Number:</b> 66654-1-PBS	<b>GenBank Accession Number:</b> BC062319	<b>Purification Method:</b> Protein A purification
<b>Size:</b> 100ug , Concentration: 1mg/ml by Nanodrop;	<b>GeneID (NCBI):</b> 339122	<b>CloneNo.:</b> 3B2A8
<b>Source:</b> Mouse	<b>UNIPROT ID:</b> Q86YS6	
<b>Isotype:</b> IgG1	<b>Full Name:</b> RAB43, member RAS oncogene family	
<b>Immunogen Catalog Number:</b> AG26911	<b>Calculated MW:</b> 212 aa, 23 kDa	
	<b>Observed MW:</b> 23 kDa	

## Applications

**Tested Applications:**  
WB, Indirect ELISA

**Species Specificity:**  
human

## Background Information

Ras-related GTP-binding protein 43 (RAB43) is a member of the Ras superfamily. RAB43 is mainly located in endoplasmic reticulum and Golgi, and plays a role as a key regulator of vesicle movement, signal transduction and tethering membrane events in membrane trafficking.

## Storage

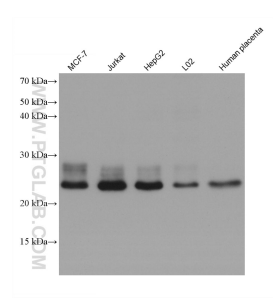
**Storage:**  
Store at -80°C.

**Storage Buffer:**  
PBS Only

For technical support and original validation data for this product please contact:  
T: 1 (888) 4PTGLAB (1-888-478-4522) (toll free in USA), or 1(312) 455-8498 (outside USA)  
E: [proteintech@ptglab.com](mailto:proteintech@ptglab.com)  
W: [ptglab.com](http://ptglab.com)

This product is exclusively available under Proteintech Group brand and is not available to purchase from any other manufacturer.

## Selected Validation Data



Various lysates were subjected to SDS PAGE followed by western blot with 66654-1-Ig (RAB43 antibody) at dilution of 1:5000 incubated at room temperature for 1.5 hours. This data was developed using the same antibody clone with 66654-1-PBS in a different storage buffer formulation.