

For Research Use Only

TOMM40 Monoclonal antibody, PBS Only

Catalog Number: 66658-1-PBS

Featured Product



Basic Information

Catalog Number:

66658-1-PBS

Size:

100ug, Concentration: 1mg/ml by Nanodrop;

Source:

Mouse

Isotype:

IgG1

Immunogen Catalog Number:

AG13065

GenBank Accession Number:

BC017224

GeneID (NCBI):

10452

UNIPROT ID:

O96008

Full Name:

translocase of outer mitochondrial membrane 40 homolog (yeast)

Calculated MW:

38 kDa

Observed MW:

38 kDa

Purification Method:

Protein A purification

CloneNo.:

5E2C5

Applications

Tested Applications:

WB, IHC, IF/ICC, Indirect ELISA

Species Specificity:

human, mouse, rat, pig

Storage

Storage:

Store at -80°C.

Storage Buffer:

PBS only

For technical support and original validation data for this product please contact:

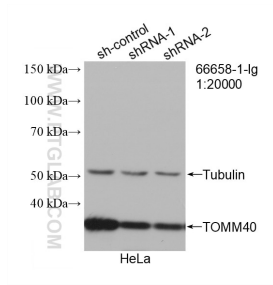
T: 1 (888) 4PTGLAB (1-888-478-4522) (toll free in USA), or 1(312) 455-8498 (outside USA)

E: proteintech@ptglab.com

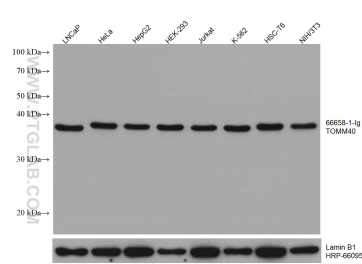
W: ptglab.com

This product is exclusively available under Proteintech Group brand and is not available to purchase from any other manufacturer.

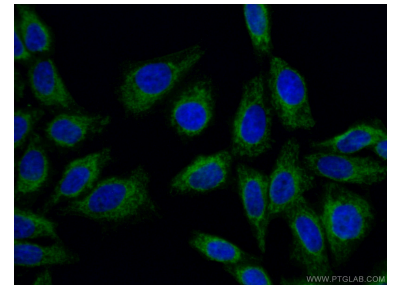
Selected Validation Data



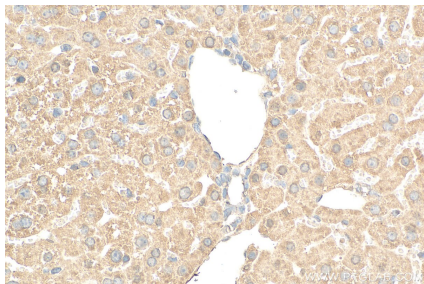
WB result of TOMM40 antibody (66658-1-Ig; 1:20000; incubated at room temperature for 1.5 hours) with sh-Control and sh-TOMM40 transfected HeLa cells. This data was developed using the same antibody clone with 66658-1-PBS in a different storage buffer formulation.



Various lysates were subjected to SDS PAGE followed by western blot with 66658-1-Ig (TOMM40 antibody) at dilution of 1:20000 incubated at room temperature for 1.5 hours. The membrane was stripped and reblotted with HRP-conjugated Lamin B1 Monoclonal antibody (HRP-66095) as loading control. This data was developed using the same antibody clone with 66658-1-PBS in a different storage buffer formulation.



Immunofluorescent analysis of (4% PFA) fixed HepG2 cells using 66658-1-Ig (TOMM40 antibody) at dilution of 1:100 and CoraLite488-Conjugated AffiniPure Goat Anti-Mouse IgG(H+L). This data was developed using the same antibody clone with 66658-1-PBS in a different storage buffer formulation.



Immunohistochemical analysis of paraffin-embedded mouse liver tissue slide using 66658-1-Ig (TOMM40 antibody) at dilution of 1:200 (under 40x lens). Heat mediated antigen retrieval with Tris-EDTA buffer (pH 9.0). This data was developed using the same antibody clone with 66658-1-PBS in a different storage buffer formulation.