

For Research Use Only

GOLGA2/GM130 Monoclonal antibody



Catalog Number: 66662-1-Ig **4 Publications**

Basic Information

Catalog Number: 66662-1-Ig	GenBank Accession Number: BC014188	Purification Method: Protein G purification
Size: 150ul , Concentration: 1000 µg/ml by Bradford method using BSA as the standard;	GeneID (NCBI): 2801	CloneNo.: 2A4F11
Source: Mouse	Full Name: golgi autoantigen, golgin subfamily a, 2	Recommended Dilutions: WB 1:5000-1:50000
Isotype: IgG1	Calculated MW: 111 kDa	
Immunogen Catalog Number: AG1848	Observed MW: 130 kDa	

Applications

Tested Applications: WB, ELISA	Positive Controls: WB : LNCaP cells, HEK-293 cells, HepG2 cells, Jurkat cells, HSC-T6 cells, HeLa cells, K-562 cells, PC-12 cells
Cited Applications: WB	
Species Specificity: Human, Rat	
Cited Species: human, rat	

Background Information

GOLGA2, also known as GM130, is a 130 kDa cis-Golgi matrix protein which is one component of the detergent and salt resistant Golgi matrix. It is a peripheral membrane protein highly bound to Golgi membrane and localized mainly at the cytoplasmic face of cis-Golgi membrane. Together with its interacting partner proteins, including p115, giantin, GRASP65, and Rab GTPase, GOLGA2/GM130 is involved in the regulation of ER-to-Golgi transport and also in the maintenance of the Golgi structure. Emerging evidence suggest that the GOLGA2/GM130 has potential roles in the control of glycosylation, cell cycle progression, and higher order cell functions such as cell polarization and directed cell migration. (PMID: 20197635)

Notable Publications

Author	Pubmed ID	Journal	Application
Xiaoliang Tan	36136987	Anticancer Drugs	WB
Nan Zhou	35174212	Front Mol Biosci	WB
Han Zeng	34974159	Mol Metab	WB

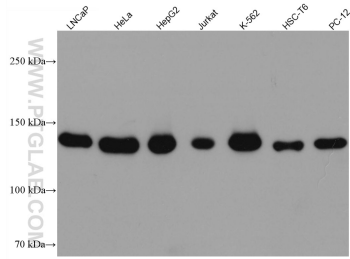
Storage

Storage:
Store at -20°C. Stable for one year after shipment.
Storage Buffer:
PBS with 0.02% sodium azide and 50% glycerol pH 7.3.
Aliquoting is unnecessary for -20°C storage

For technical support and original validation data for this product please contact:
T: 1 (888) 4PTGLAB (1-888-478-4522) (toll free in USA), or 1(312) 455-8498 (outside USA)
E: proteintech@ptglab.com
W: ptglab.com

This product is exclusively available under Proteintech Group brand and is not available to purchase from any other manufacturer.

Selected Validation Data



Various lysates were subjected to SDS PAGE followed by western blot with 66662-1-Ig (GOLGA2/GM130 antibody) at dilution of 1:10000 incubated at room temperature for 1.5 hours.