

For Research Use Only

GOLGA2/GM130 Monoclonal antibody, PBS Only (Capture)

Catalog Number: 66662-1-PBS

Featured Product



Basic Information

Catalog Number:

66662-1-PBS

Size:

100ug, Concentration: 1mg/ml by Nanodrop;

Source:

Mouse

Isotype:

IgG1

Immunogen Catalog Number:

AG1848

GenBank Accession Number:

BC014188

GeneID (NCBI):

2801

UNIPROT ID:

Q08379

Full Name:

golgi autoantigen, golgin subfamily a, 2

Calculated MW:

111 kDa

Observed MW:

130 kDa

Purification Method:

Protein A purification

CloneNo.:

2A4F11

Applications

Tested Applications:

WB, IF/ICC, Cytometric bead array, Indirect ELISA

Species Specificity:

human, rat

Product Information

66662-1-PBS targets GOLGA2/GM130 as part of a matched antibody pair:

MP51313-1: 66662-1-PBS capture and 66662-3-PBS detection (validated in Cytometric bead array)

MP51313-2: 66662-1-PBS capture and 66662-3-PBS detection (validated in Cytometric bead array)

Unconjugated mouse monoclonal antibody pair in PBS only (BSA and azide free) storage buffer at a concentration of 1 mg/mL, ready for conjugation.

This conjugation ready format makes antibodies ideal for use in many applications including: ELISAs, multiplex assays requiring matched pairs, mass cytometry, and multiplex imaging applications. Antibody use should be optimized by the end user for each application and assay.

Background Information

GOLGA2, also known as GM130, is a 130 kDa cis-Golgi matrix protein which is one component of the detergent and salt resistant Golgi matrix. It is a peripheral membrane protein highly bound to Golgi membrane and localized mainly at the cytoplasmic face of cis-Golgi membrane. Together with its interacting partner proteins, including p115, giantin, GRASP65, and Rab GTPase, GOLGA2/GM130 is involved in the regulation of ER-to-Golgi transport and also in the maintenance of the Golgi structure. Emerging evidence suggest that the GOLGA2/GM130 has potential roles in the control of glycosylation, cell cycle progression, and higher order cell functions such as cell polarization and directed cell migration. (PMID: 20197635)

Storage

Storage:

Store at -80°C.

Storage Buffer:

PBS Only

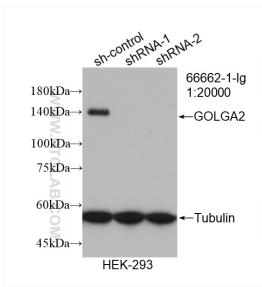
For technical support and original validation data for this product please contact:

T: 1 (888) 4PTGLAB (1-888-478-4522) (toll free in USA), or 1(312) 455-8498 (outside USA)

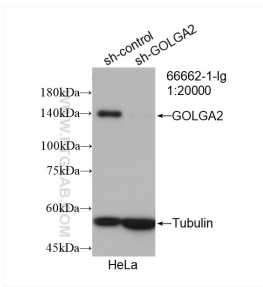
E: proteintech@ptglab.com
W: ptglab.com

This product is exclusively available under Proteintech Group brand and is not available to purchase from any other manufacturer.

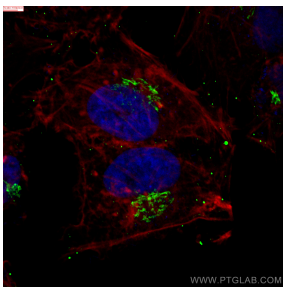
Selected Validation Data



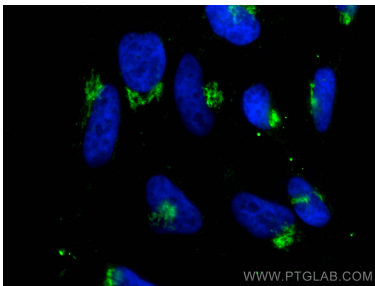
WB result of GOLGA2/GM130 antibody (66662-1-Ig; 1:20000; incubated at room temperature for 1.5 hours) with sh-Control and sh-GOLGA2/GM130 transfected HEK-293 cells. This data was developed using the same antibody clone with 66662-1-PBS in a different storage buffer formulation.



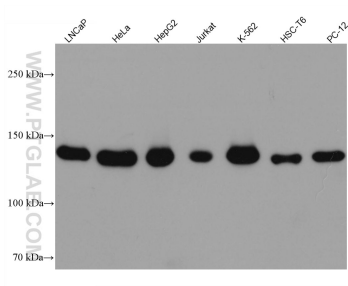
WB result of GOLGA2/GM130 antibody (66662-1-Ig; 1:20000; incubated at room temperature for 1.5 hours) with sh-Control and sh-GOLGA2/GM130 transfected HeLa cells. This data was developed using the same antibody clone with 66662-1-PBS in a different storage buffer formulation.



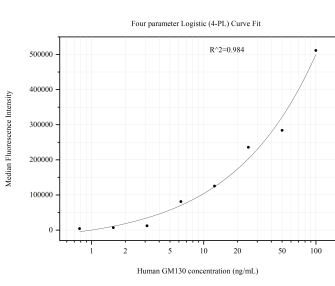
Immunofluorescent analysis of (4% PFA) fixed HeLa cells using GOLGA2/GM130 antibody (66662-1-Ig, Clone: 2A4F11) at dilution of 1:800 and CoraLite®488-Conjugated Goat Anti-Mouse IgG(H+L) (SA00013-1), CL594-Phalloidin (red). This data was developed using the same antibody clone with 66662-1-PBS in a different storage buffer formulation.



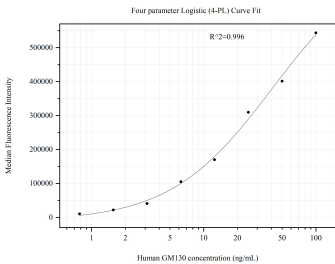
Immunofluorescent analysis of (4% PFA) fixed HeLa cells using GOLGA2/GM130 antibody (66662-1-Ig, Clone: 2A4F11) at dilution of 1:1000 and CoraLite®488-Conjugated AffiniPure Goat Anti-Mouse IgG(H+L). This data was developed using the same antibody clone with 66662-1-PBS in a different storage buffer formulation.



Various lysates were subjected to SDS PAGE followed by western blot with 66662-1-Ig (GOLGA2/GM130 antibody) at dilution of 1:10000 incubated at room temperature for 1.5 hours. This data was developed using the same antibody clone with 66662-1-PBS in a different storage buffer formulation.



Cytometric bead array standard curve of MP51313-1, GM130;GOLGA2 Monoclonal Matched Antibody Pair, PBS Only. Capture antibody: 66662-1-PBS. Detection antibody: 66662-3-PBS. Standard:Ag1848. Range: 0.781-100 ng/mL.



Cytometric bead array standard curve of MP51313-2, GM130;GOLGA2 Monoclonal Matched Antibody Pair, PBS Only. Capture antibody: 66662-1-PBS. Detection antibody: 66662-3-PBS. Standard:Ag1848. Range: 0.781-100 ng/mL.