

For Research Use Only

PDIA6 Monoclonal antibody, PBS Only



Catalog Number: 66669-1-PBS

Basic Information

Catalog Number: 66669-1-PBS	GenBank Accession Number: BC001312	Purification Method: Protein A purification
Size: 100ug , Concentration: 1mg/ml by Nanodrop;	GeneID (NCBI): 10130	CloneNo.: 1G2D4
Source: Mouse	UNIPROT ID: Q15084	
Isotype: IgG1	Full Name: protein disulfide isomerase family A, member 6	
Immunogen Catalog Number: AG27608	Calculated MW: 48 kDa, 54 kDa	
	Observed MW: 54 kDa	

Applications

Tested Applications:
WB, IF, IHC, Indirect ELISA

Species Specificity:
Human, Mouse, Rat

Background Information

PDIA6 (Protein disulfide-isomerase A6) is also named as ERP5, P5, TXNDC7 and belongs to the protein disulfide isomerase family. It is one of the endoplasmic reticulum (ER) resident proteins that catalyze the formation, reduction, and isomerization of disulfide bonds in proteins and is thought to play a role in the folding of disulfide-bonded proteins (PMID:7590364). It has 2 isoforms produced by alternative splicing. This antibody is specific to PDIA6.

Storage

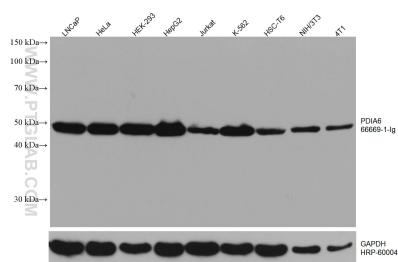
Storage:
Store at -80°C.

Storage Buffer:
PBS Only

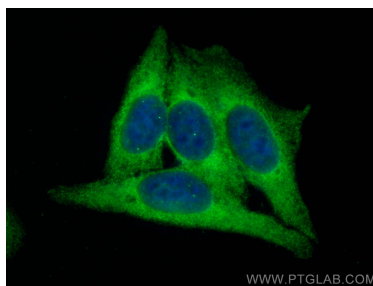
For technical support and original validation data for this product please contact:
T: 1 (888) 4PTGLAB (1-888-478-4522) (toll free in USA), or 1(312) 455-8498 (outside USA)
E: proteintech@ptglab.com
W: ptglab.com

This product is exclusively available under Proteintech Group brand and is not available to purchase from any other manufacturer.

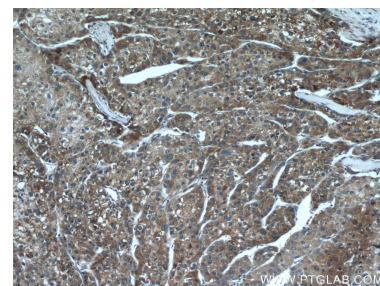
Selected Validation Data



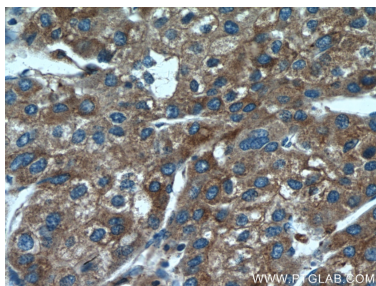
Various lysates were subjected to SDS PAGE followed by western blot with 66669-1-Ig (PDIA6 antibody) at dilution of 1:20000 incubated at room temperature for 1.5 hours. The membrane was stripped and reblotted with HRP-conjugated GAPDH Monoclonal antibody (HRP-60004) as loading control. This data was developed using the same antibody clone with 66669-1-PBS in a different storage buffer formulation.



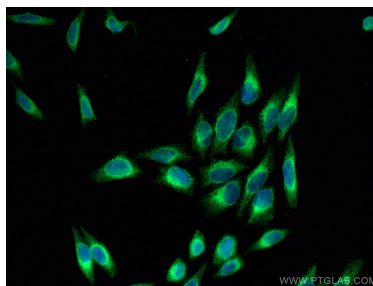
Immunofluorescent analysis of (-20°C Ethanol) fixed HepG2 cells using PDIA6 antibody (66669-1-Ig, Clone: 1G2D4) at dilution of 1:800 and CoraLite®488-Conjugated AffiniPure Goat Anti-Mouse IgG(H+L). This data was developed using the same antibody clone with 66669-1-PBS in a different storage buffer formulation.



Immunohistochemical analysis of paraffin-embedded human liver cancer tissue slide using 66669-1-Ig (PDIA6 antibody) at dilution of 1:300 (under 10x lens). This data was developed using the same antibody clone with 66669-1-PBS in a different storage buffer formulation.



Immunohistochemical analysis of paraffin-embedded human liver cancer tissue slide using 66669-1-Ig (PDIA6 antibody) at dilution of 1:300 (under 40x lens). This data was developed using the same antibody clone with 66669-1-PBS in a different storage buffer formulation.



Immunofluorescent analysis of (-20°C Methanol) fixed HepG2 cells using PDIA6 antibody (66669-1-Ig, Clone: 1G2D4) at dilution of 1:400 and CoraLite®488-Conjugated AffiniPure Goat Anti-Mouse IgG(H+L). This data was developed using the same antibody clone with 66669-1-PBS in a different storage buffer formulation.