

PLZF Monoclonal antibody, PBS Only (Detector)

Catalog Number: 66672-1-PBS

Basic Information

Catalog Number: 66672-1-PBS	GenBank Accession Number: BC026902	Purification Method: Protein A purification
Size: 100ug , Concentration: 1mg/ml by Nanodrop;	GeneID (NCBI): 7704	CloneNo.: 2E6F12
Source: Mouse	UNIPROT ID: Q05516	
Isotype: IgG1	Full Name: zinc finger and BTB domain containing 16	
Immunogen Catalog Number: AG25180	Calculated MW: 673 aa, 74 kDa	
	Observed MW: 75 kDa	

Applications

Tested Applications:
WB, Cytometric bead array, Indirect ELISA

Species Specificity:
human, rat

Product Information

66672-1-PBS targets PLZF as part of a matched antibody pair:

MP50366-1: 66672-2-PBS capture and 66672-1-PBS detection (validated in Cytometric bead array)

MP50366-2: 66672-3-PBS capture and 66672-1-PBS detection (validated in Cytometric bead array)

Unconjugated mouse monoclonal antibody pair in PBS only (BSA and azide free) storage buffer at a concentration of 1 mg/mL, ready for conjugation.

This conjugation ready format makes antibodies ideal for use in many applications including: ELISAs, multiplex assays requiring matched pairs, mass cytometry, and multiplex imaging applications. Antibody use should be optimized by the end user for each application and assay.

Background Information

PLZF, also named as Zinc finger protein 145, is a 673 amino acid protein, which belongs to the krueppel C2H2-type zinc-finger protein family. PLZF is expressed in bone marrow, early myeloid cell lines and peripheral blood mononuclear cells. PLZF may play a role in myeloid maturation and in the development and/or maintenance of other differentiated tissues.

Storage

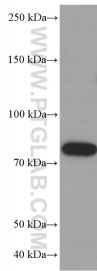
Storage:
Store at -80°C.

Storage Buffer:
PBS Only

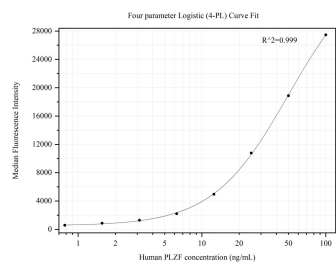
For technical support and original validation data for this product please contact:
T: 1 (888) 4PTGLAB (1-888-478-4522) (toll free in USA), or 1(312) 455-8498 (outside USA)
E: proteintech@ptglab.com
W: ptglab.com

This product is exclusively available under Proteintech Group brand and is not available to purchase from any other manufacturer.

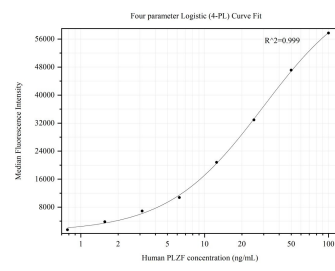
Selected Validation Data



Ramos cells were subjected to SDS PAGE followed by western blot with 66672-1-Ig (PLZF antibody) at dilution of 1:5000 incubated at room temperature for 1.5 hours. This data was developed using the same antibody clone with 66672-1-PBS in a different storage buffer formulation.



Cytometric bead array standard curve of MP50366-1, PLZF Monoclonal Matched Antibody Pair, PBS Only. Capture antibody: 66672-2-PBS. Detection antibody: 66672-1-PBS. Standard:Ag25180. Range: 0.781-100 ng/mL



Cytometric bead array standard curve of MP50366-2, PLZF Monoclonal Matched Antibody Pair, PBS Only. Capture antibody: 66672-3-PBS. Detection antibody: 66672-1-PBS. Standard:Ag25180. Range: 0.781-100 ng/mL