

For Research Use Only

ATP5D Monoclonal antibody

Catalog Number: 66673-1-Ig



Basic Information

Catalog Number: 66673-1-Ig	GenBank Accession Number: BC002389	Purification Method: Protein G purification
Size: 150ul, Concentration: 1700 ug/ml by 513 Nanodrop and 1000 ug/ml by Bradford method using BSA as the standard;	GeneID (NCBI): 513	CloneNo.: 1G12C7
Source: Mouse	UNIPROT ID: P30049	Recommended Dilutions: WB 1:1000-1:4000 IHC 1:50-1:500
Isotype: IgG1	Full Name: ATP synthase, H ⁺ transporting, mitochondrial F1 complex, delta subunit	
Immunogen Catalog Number: AG7016	Calculated MW: 17 kDa	
	Observed MW: 15-17 kDa	

Applications

Tested Applications: WB, IHC, ELISA	Positive Controls:
Species Specificity: Human	WB: HeLa cells, HEK-293 cells, HepG2 cells, Jurkat cells
Note-IHC: suggested antigen retrieval with TE buffer pH 9.0; (*) Alternatively, antigen retrieval may be performed with citrate buffer pH 6.0	IHC: human kidney tissue,

Background Information

The mitochondrial F₁F₀-ATP synthase complex uses energy derived from a proton gradient to synthesize ATP. The ATP5D gene encodes the delta subunit of the mitochondrial ATP synthase F1 complex and belongs to the ATPase epsilon chain family. This gene encodes the full length protein of 17 kDa with a transit peptide of 22 amino acid.

Storage

Storage:
Store at -20°C. Stable for one year after shipment.
Storage Buffer:
PBS with 0.02% sodium azide and 50% glycerol pH 7.3.
Aliquoting is unnecessary for -20°C storage

*** 20ul sizes contain 0.1% BSA

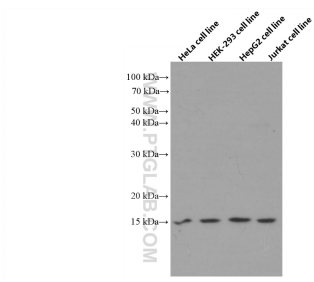
For technical support and original validation data for this product please contact:

T: 1 (888) 4PTGLAB (1-888-478-4522) (toll free in USA), or 1(312) 455-8498 (outside USA)

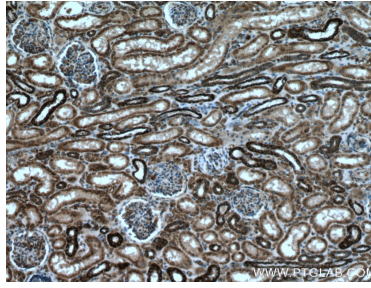
E: proteintech@ptglab.com
W: ptglab.com

This product is exclusively available under Proteintech Group brand and is not available to purchase from any other manufacturer.

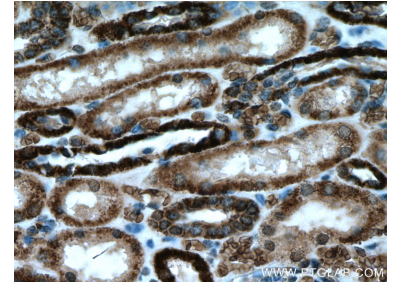
Selected Validation Data



Various lysates were subjected to SDS PAGE followed by western blot with 66673-1-Ig (ATP5D antibody) at dilution of 1:2000 incubated at room temperature for 1.5 hours.



Immunohistochemical analysis of paraffin-embedded human kidney tissue slide using 66673-1-Ig (ATP5D antibody) at dilution of 1:200 (under 10x lens. Heat mediated antigen retrieval with Tris-EDTA buffer (pH 9.0).



Immunohistochemical analysis of paraffin-embedded human kidney tissue slide using 66673-1-Ig (ATP5D antibody) at dilution of 1:200 (under 40x lens. Heat mediated antigen retrieval with Tris-EDTA buffer (pH 9.0).