

For Research Use Only

ATP5D Monoclonal antibody, PBS Only



Catalog Number: 66673-1-PBS

Basic Information

Catalog Number: 66673-1-PBS	GenBank Accession Number: BC002389	Purification Method: Protein G purification
Size: 100ug , Concentration: 1 mg/ml by Nanodrop;	GeneID (NCBI): 513	CloneNo.: 1G12C7
Source: Mouse	UNIPROT ID: P30049	
Isotype: IgG1	Full Name: ATP synthase, H ⁺ transporting, mitochondrial F1 complex, delta subunit	
Immunogen Catalog Number: AG7016	Calculated MW: 17 kDa	
	Observed MW: 15-17 kDa	

Applications

Tested Applications:
WB, IHC, Indirect ELISA

Species Specificity:
Human

Background Information

The mitochondrial F₁F₀-ATP synthase complex uses energy derived from a proton gradient to synthesize ATP. The ATP5D gene encodes the delta subunit of the mitochondrial ATP synthase F1 complex and belongs to the ATPase epsilon chain family. This gene encode the full length protein of 17 kDa with a transit peptide of 22 amino acid.

Storage

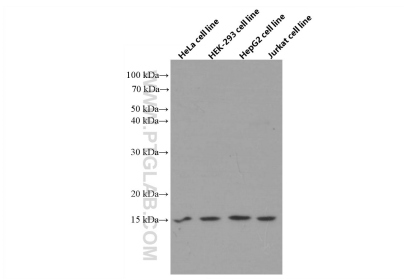
Storage:
Store at -80°C.

Storage Buffer:
PBS Only

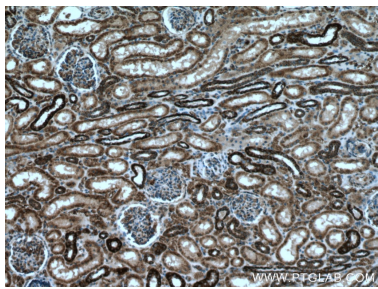
For technical support and original validation data for this product please contact:
T: 1 (888) 4PTGLAB (1-888-478-4522) (toll free in USA), or 1(312) 455-8498 (outside USA)
E: proteintech@ptglab.com
W: ptglab.com

This product is exclusively available under Proteintech Group brand and is not available to purchase from any other manufacturer.

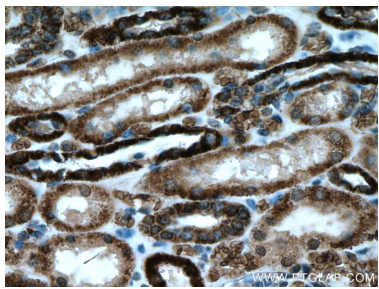
Selected Validation Data



Various lysates were subjected to SDS PAGE followed by western blot with 66673-1-Ig (ATP5D antibody) at dilution of 1:2000 incubated at room temperature for 1.5 hours. This data was developed using the same antibody clone with 66673-1-PBS in a different storage buffer formulation.



Immunohistochemical analysis of paraffin-embedded human kidney tissue slide using 66673-1-Ig (ATP5D antibody) at dilution of 1:200 (under 10x lens). Heat mediated antigen retrieval with Tris-EDTA buffer (pH 9.0). This data was developed using the same antibody clone with 66673-1-PBS in a different storage buffer formulation.



Immunohistochemical analysis of paraffin-embedded human kidney tissue slide using 66673-1-Ig (ATP5D antibody) at dilution of 1:200 (under 40x lens). Heat mediated antigen retrieval with Tris-EDTA buffer (pH 9.0). This data was developed using the same antibody clone with 66673-1-PBS in a different storage buffer formulation.