

For Research Use Only

BBS10 Monoclonal antibody

Catalog Number: 66679-1-Ig



Basic Information

Catalog Number: 66679-1-Ig	GenBank Accession Number: BC013795	Purification Method: Protein A purification
Size: 150ul , Concentration: 1800 µg/ml by Nanodrop and 953 µg/ml by Bradford method using BSA as the standard;	GeneID (NCBI): 79738	CloneNo.: 4C6A10
Source: Mouse	Full Name: Bardet-Biedl syndrome 10	Recommended Dilutions: WB 1:1000-1:6000 IHC 1:150-1:600
Isotype: IgG2b	Calculated MW: 81 kDa	
Immunogen Catalog Number: AG17960	Observed MW: 81 kDa	

Applications

Tested Applications: IHC, WB, ELISA	Positive Controls: WB : NCCIT cells, L02 cells, HepG2 cells IHC : human liver cancer tissue,
Species Specificity: Human	
Note-IHC: suggested antigen retrieval with TE buffer pH 9.0; (*) Alternatively, antigen retrieval may be performed with citrate buffer pH 6.0	

Background Information

BBS10, also named as C12orf58, belongs to the TCP-1 chaperonin family. It is probable molecular chaperone. Assists the folding of proteins upon ATP hydrolysis. As part of the BBS/CCT complex, BBS10 may play a role in the assembly of BBSome, a complex involved in ciliogenesis regulating transports vesicles to the cilia. Involved in adipogenic differentiation. (PMID: 20080638, 19190184) Defects in BBS10 are the cause of Bardet-Biedl syndrome type 10 (BBS10).

Storage

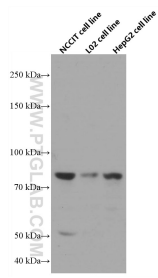
Storage:
Store at -20°C. Stable for one year after shipment.
Storage Buffer:
PBS with 0.02% sodium azide and 50% glycerol pH 7.3.
Aliquoting is unnecessary for -20°C storage

*** 20ul sizes contain 0.1% BSA

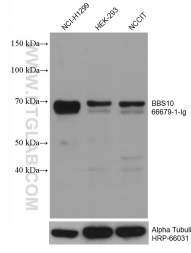
For technical support and original validation data for this product please contact:
T: 1 (888) 4PTGLAB (1-888-478-4522) (toll free in USA), or 1(312) 455-8498 (outside USA)
E: proteintech@ptglab.com
W: ptglab.com

This product is exclusively available under Proteintech Group brand and is not available to purchase from any other manufacturer.

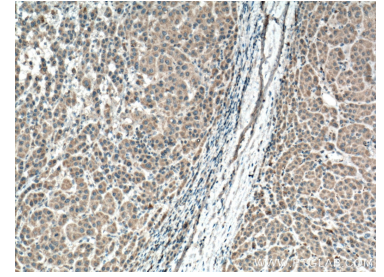
Selected Validation Data



Various lysates were subjected to SDS PAGE followed by western blot with 66679-1-Ig (BBS10 antibody) at dilution of 1:3000 incubated at room temperature for 1.5 hours.



Various lysates were subjected to SDS PAGE followed by western blot with 66679-1-Ig (BBS10 antibody) at dilution of 1:3000 incubated at room temperature for 1.5 hours. The membrane was stripped and reblotted with HRP-conjugated Alpha Tubulin Monoclonal antibody (HRP-66031) as loading control.



Immunohistochemical analysis of paraffin-embedded human liver cancer tissue slide using 66679-1-Ig (BBS10 antibody) at dilution of 1:300 (under 10x lens). Heat mediated antigen retrieval with Tris-EDTA buffer (pH 9.0).